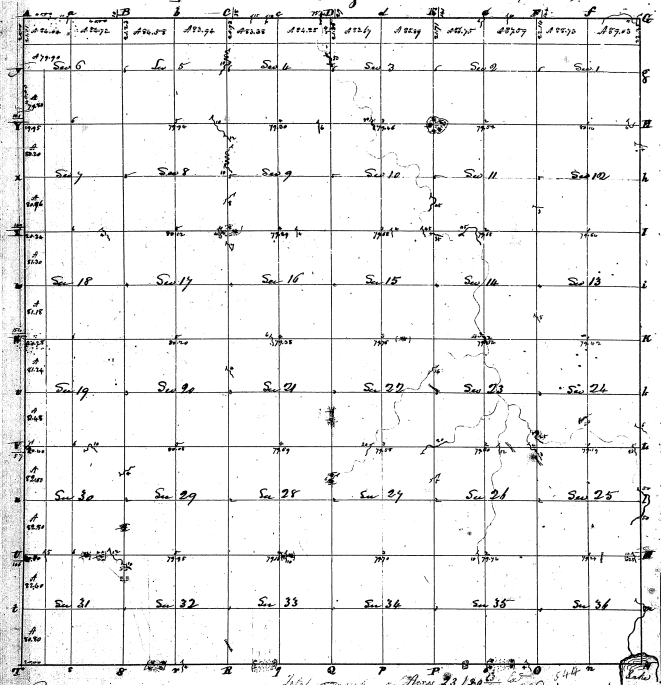


Township N. VI north, Range N. VI east 110r. (M. Tor.)

112



28-10

31-32

Witness to a contract witnessed from Bureau Office Survey General of the United States bearing date the day of \_\_\_\_\_ 1880  
 These monuments are set and found the above described boundary and corner  
 of the plot and described in the file No. 11000 and returned to the Survey General's Office on \_\_\_\_\_ day of \_\_\_\_\_ 1880  
 Henry Parker D. S.