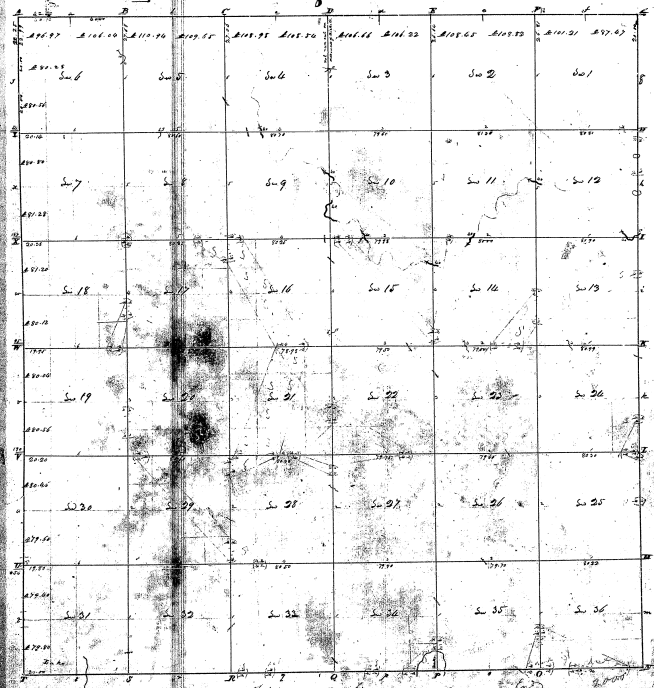


Township N: VI north, Range N: VII East Mer. (Mich. Ter.)

72



28-19

28-19

Not over 2000 ft. 28-19-99
 Connected to a contract with said instructions from Charles J. Fox, Surveyor General of the State of Michigan, having made the
 above mentioned lot out and surveyed the same, and as to the fact that it had been made and
 bounded by the contract and instructions as was represented on said plan and specified in the file with more than of said contract
 and the fact into the Survey General's Office - before the day of April 1833 -
 W. M. P. D. C.