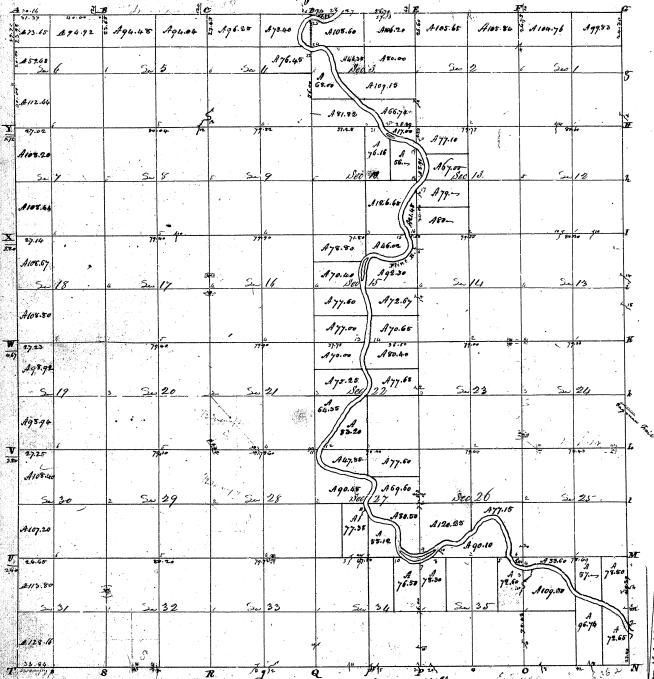


Township N. VII North, Range N. V East Mer. (B. Tor.)

32



Total number of acres 22,380⁰⁰/₁₀₀ Sec 14 1/2

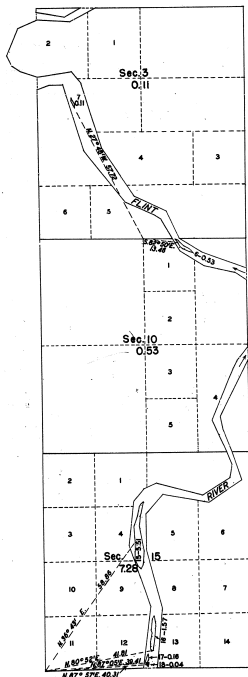
Pursuant to a contract with and instructions from Edward Tupper Esquire Surveyor General of the United States bearing date the 5th day of September 1822 I have examined said map and bearings & also viewed Township, and do hereby certify that it has such marks and bounds both natural and artificial as are warranted by said plat and is described in the Subj. Notes made thereof returned with the plat to the Surveyor General of the U.S.

Certified this 17th day of January 1822. *Wm. H. Hall* Surveyor

28-9
28-9

TOWNSHIP 8 NORTH, RANGE 5 EAST, MICHIGAN MERIDIAN, MICHIGAN
 SURVEY OF ISLANDS IN SECTIONS 3, 10 AND 15

28-9 (4)



This plat represents the survey of islands in the Flint River, in secs. 3, 10, and 15, which were not included in the original survey of T. 8 N., R. 5 E., as represented on the undated plat of the survey of 1822.

Surveyed by Hugh H. Crawford, Cadastral Surveyor, from June 18 to July 12, 1957, under Special Instructions for Group 66, Michigan, dated May 29, 1957.

UNITED STATES DEPARTMENT OF THE INTERIOR
 BUREAU OF LAND MANAGEMENT
 Washington, D. C. March 26, 1958

This plat is strictly conformable to the approved field notes, and the survey, having been correctly executed in accordance with the requirements of law and the regulations of this Bureau, is hereby accepted.

For the Director

Earl S. Spanglin

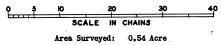
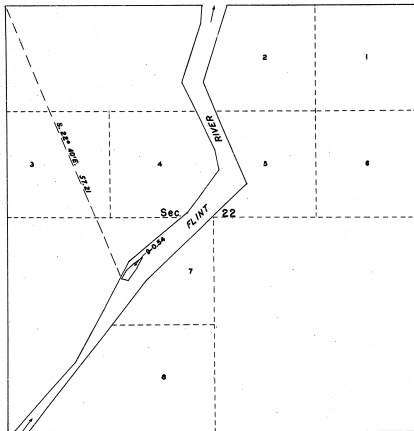
Cadastral Engineering Staff Officer

0 5 10 20 30 40 50
 SCALE IN CHAINS

Area surveyed: 7.92 acres

TOWNSHIP 8 NORTH, RANGE 5 EAST, MICHIGAN MERIDIAN, MICHIGAN
 SURVEY OF AN ISLAND IN SECTION 22

28-9 (9)



This plat represents the survey of an island in the Flint River which was not included in the original survey of T. 8 N., R. 5 E., as represented on the undated plat of the survey of 1822.

Surveyed by Hugh B. Crawford, Cadastral Surveyor, from June 18 to July 23, 1897, under Special Instructions for Group 66, Michigan, dated May 20, 1897.

UNITED STATES DEPARTMENT OF THE INTERIOR
 BUREAU OF LAND MANAGEMENT
 Washington, D. C. March 26, 1958

This plat is strictly conformable to the approved field notes, and the survey, having been correctly computed in accordance with the requirements of law and the regulations of this Bureau, is hereby accepted.

For the Director
John P. Harrington
 Cadastral Engineering Staff Officer