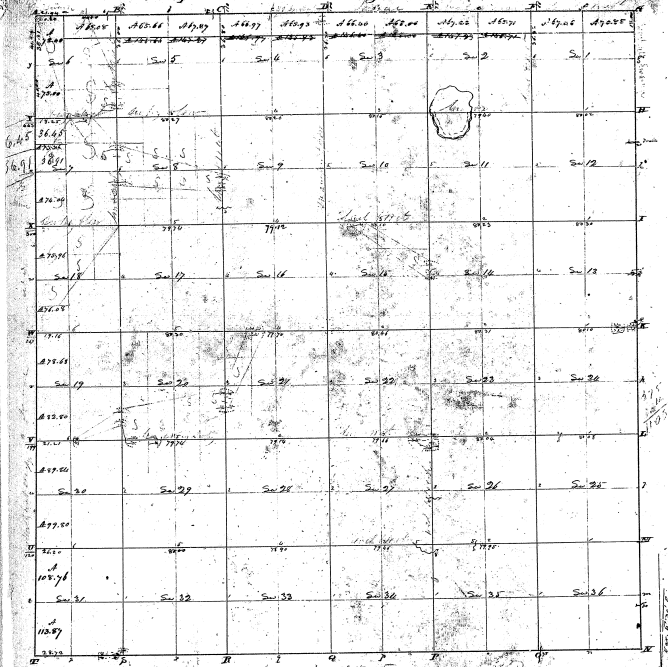


Township N-IX, Range N-VII



28-6

28-6

23 07 15

Obvious to a contractor with and instructions from Bureau of the Survey General of the United States, having data this day  
 I have advanced him out and through the above boundary, and is clearly that it has such marks  
 and lands both personal and artificial as are represented on said plat and described in the field notes, more than  
 indicated with this plat, in the Survey General's office. Done this 17<sup>th</sup> day of January 1850

Horatio Bell