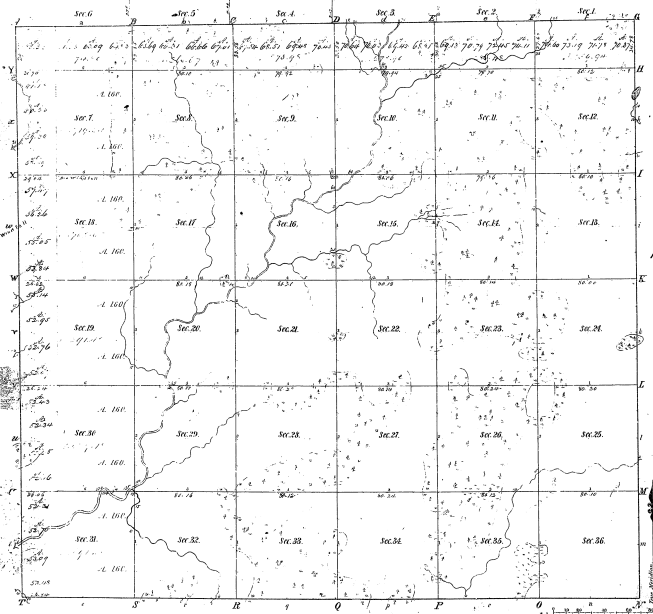


Re Survey
Township 1° 20' N. Range N° 2 East Mer. 11th.



Boundaries of
 (Cont) Course 1821 (Part) Course 1822 (Part) Course 1823

<p style="font-size: 2em; text-align: center;">23-3</p>	
---	--

Total number of Acrs. 2116.91

Survey Designated	By Whom Surveyed	Date of Contract	Amount of Survey	When Surveyed	When	When
Township Survey	Charles C. Cross	July 12, 1823	27 53 25	1823		
Subdivisions	John W. Miller	Jan'y 24, 1826	27 53 25	1826		

The above copy of Township 1° 20' N. R. 2 E. Mer. 11th of Range 15° E. Cont. of the Principal Meridian 1823 is hereby compared with the field notes of the survey thereof on file in this Office, which have been examined, and approved.

Surveyor General's Office.

St. Louis, Jan'y 24, 1826.

James Lyons, Com'rs