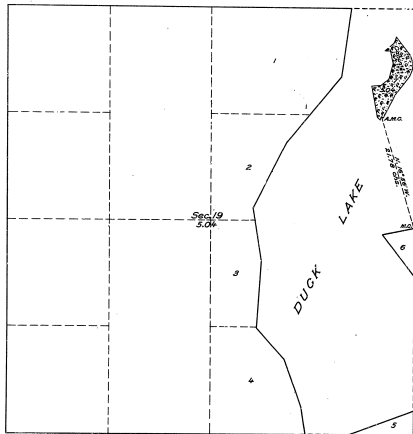


PLAT OF AN ISLAND
 IN
 DUCK LAKE
 Sec. 19, T. 44 N., R. 39 W., Mich. Mer.
 MICHIGAN.



LEGEND.

Scale: 1 Inch = 30 chains.

Surveyed by Guy R. Veal, U. S. Cadastral Engineer, on September 13 and 24, 1923, under supplemental special instructions for Group No. 7, Michigan, dated September 1, 1923, issued by Frank M. Johnson, Supervisor of Surveys, which were approved by the Commissioner of the General Land Office on September 8, 1923.
 Area of lands surveyed = 5.04 Acres, not shown upon the plat approved July 2, 1925.
 Areas of provisionally surveyed lands not shown.

The undersigned hereby certifies that the survey delineated upon this plat has been executed under his general direction and in accordance with the approved supplemental special instructions issued pursuant to authority contained in office letter 1104955 "M" M.P., dated August 30, 1923, and that the field notes and the plat of the survey have been carefully verified.

Denver, Colorado,
 January 25, 1924.

William J. Gray
 Superintendent of Surveys.

Department of the Interior, M.P.
 General Land Office.

Washington, D. C., January 30, 1924.

The above plat of an Island in Duck Lake in Section 19, Township 44 North, Range 39 West, of the Michigan Meridian, Michigan, is strictly conformable to the field notes of the survey thereof, on file in this office, which have been examined and approved.

William J. Gray
 Commissioner and ex officio
 U. S. Surveyor General for Michigan.

43-31
 43-31