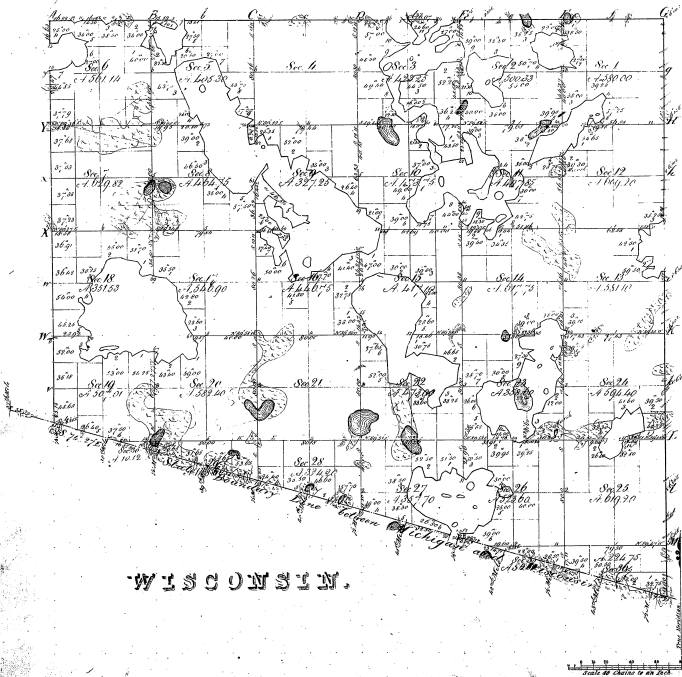


Township N^o 44 N. Range N^o 40 W. Mer. Mich.



WISCONSIN.

Section	Acres	Owner	Value	Remarks
1				
2				
3				
4				
5				
6				
7				
8				
9				
10				
11				
12				
13				
14				
15				
16				
17				
18				
19				
20				
21				
22				
23				
24				
25				
26				
27				
28				
29				
30				
31				
32				
33				
34				
35				
36				

113

43-30

Map made
for the
11. 19. 44

Total number of acres 14,348.75

Survey Designated	By Whom Surveyed	Date of Contract	When Surveyed	When Returned
Traverse	W. H. B. Burt	April 15, 1887	5. 27. 87	3. 2. 88
Traverse	W. H. B. Burt	June 6, 1887	8. 1. 87	8. 1. 87
Traverse	W. H. B. Burt	April 15, 1887	5. 27. 87	3. 2. 88

The above Map of Township N^o 44 North of Range N^o 40 West of the
Principal Meridian Wisconsin is a plat prepared by the
said surveyor, showing the lines and corners, and approved
by the Surveyor General's Office, this 2. 11. 88.
Surveyor General's Office
James H. Hill, Surveyor General

PLAT of ISLANDS
in
Secs. 23, 26 and 27, T. 44 N., R. 40 W.,
Michigan Meridian,
MICHIGAN.

43-30

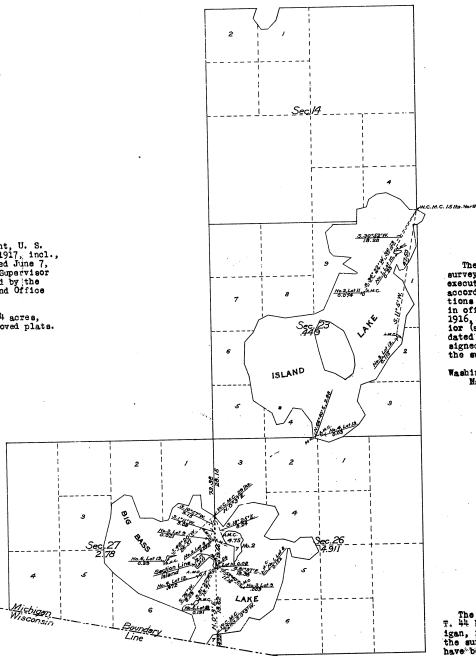
43-30

Legend

Scale :80 chains to an inch.

Surveyed by Lester L. Clement, U. S. Surveyor, from July 13 to 24, 1917, incl., under special instructions dated June 7, 1917, issued by A. D. Kidder, Supervisor of Surveys, which were approved by the Commissioner of the General Land Office on June 16, 1917.

Area of land surveyed - 8.14 acres, not shown upon previously approved plats.



The undersigned hereby certifies that the survey delineated upon this plat has been executed under his general direction and in accordance with the approved special instructions issued pursuant to authority contained in office letter signed and dated November 2, 1916, addressed to the Secretary of the Interior approved November 18, 1916, and letter dated March 21, 1917, addressed to the undersigned, and that the field notes and plat of the survey have been carefully verified.

Washington, D. C., G. D. Fisher
May 1, 1919. Associate-Supervisor of Surveys.

DEPARTMENT OF THE INTERIOR

General Land Office

Washington, D. C., May 10 1919.

The above plat of islands in secs. 23, 26 and 27, T. 44 N., R. 40 W., of the Michigan Meridian, Michigan, is strictly conformable to the field notes of the survey thereof, on file in this office, which have been examined and approved.

Commissioner and ex-officio
U. S. Surveyor General for Michigan.

43-30

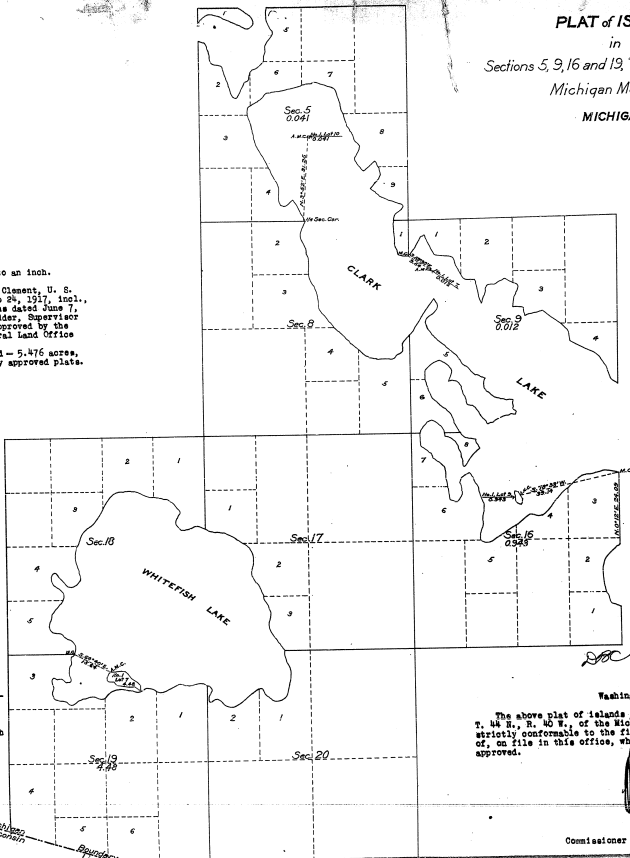
PLAT of ISLANDS
in
Sections 5, 9, 16 and 19, T. 44 N., R. 40 W.,
Michigan Meridian,
MICHIGAN.

43-30

Legend.

Scale : 20 chains to an inch.

Surveyed by Lester L. Clement, U. S. Surveyor, from July 13 to 29, 1917, incl., under special instructions dated June 7, 1917, issued by A. D. Kidder, Supervisor of Surveys, which were approved by the Commissioner of the General Land Office on June 16, 1917.
Area of lands surveyed - 5,476 acres, not shown upon previously approved plat.



The undersigned hereby certifies that the survey delineated upon this plat has been executed under his general direction and in accordance with the approved special instructions issued pursuant to authority contained in office letter 642264 - rev dated November 2, 1916, addressed to the Secretary of the Interior (approved November 24, 1916), and letter dated March 21, 1917, addressed to the undersigned, and that the field notes and plat of the survey have been carefully verified.

Washington, D. C., *A. D. Kidder*
May 1, 1919.
Associate Supervisor
of Surveys:

Michigan
WisconsinBoundary
Line

DEPARTMENT OF THE INTERIOR
General Land Office
Washington, D. C., May 10, 1919.

The above plat of islands in Sections 5, 9, 16 and 19, T. 44 N., R. 40 W., of the Michigan Meridian, Michigan, is strictly conformable to the field notes of the survey thereof, on file in this office, which have been examined and approved.

[Signature]
Commissioner and ex-officio U. S. Surveyor General
for Michigan.

PLAT of ISLANDS
in
Secs. 23, 26 and 27, T. 44 N., R. 40 W.,
Michigan Meridian,
MICHIGAN.

Survey Accepted May 10, 1919.

G. L. O.

43-30
12

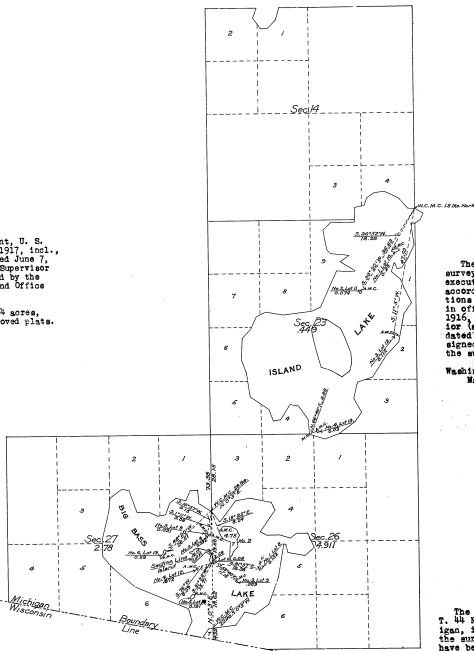
43-30

Legend

Scale :20 chains to an inch.

Surveyed by Lester L. Clement, U. S. Surveyor, from July 13 to 28, 1917, incl., under special instructions dated June 7, 1917, issued by A. D. Kildner, Supervisor of Surveys, which were approved by the Commissioner of the General Land Office on June 25, 1917.

Area of land surveyed = 5.14 acres, not shown upon previously approved plat.



The undersigned hereby certifies that the survey delineated upon this plat has been executed under his general direction and in accordance with the approved special instructions issued pursuant to authority contained in office letter 642248 "B" dated November 2, 1916, addressed to the Secretary of the Interior (approved November 14, 1916), and letter dated March 21, 1917, addressed to the undersigned, and that the field notes and plat of the survey have been carefully verified.

Washington, D. C., *A. D. Kildner*
May 1, 1919. Associate-Supervisor of
Surveys.

DEPARTMENT OF THE INTERIOR

General Land Office

Washington, D. C., May 10, 1919.

The above plat of islands in secs. 23, 26 and 27, T. 44 N., R. 40 W., of the Michigan Meridian, Michigan, is strictly conformable to the field notes of the survey thereof, on file in this office, which have been examined and approved.

[Signature]

Commissioner and ex-officio
U. S. Surveyor General for Michigan.

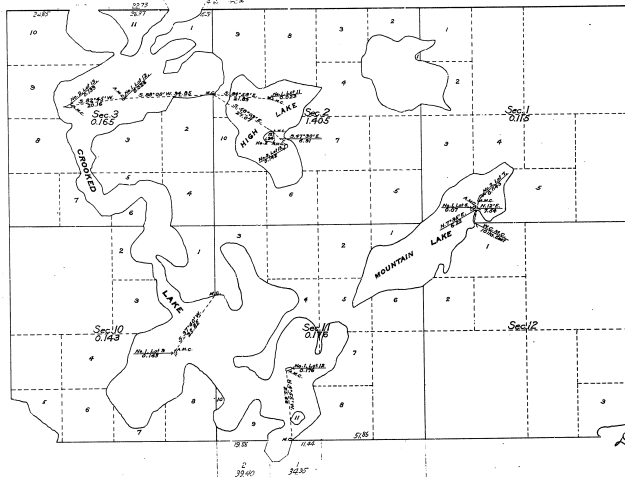
PLAT of ISLANDS

in
Sections 1, 2, 3, 10 and 11, T. 44 N. R. 40 W.,
Michigan Meridian,
MICHIGAN.

Survey Accepted May 10, 1919.
G. L. O.

43-30

43-30



Legend.

Scale : 20 chains to an inch.

Surveyed by Lester L. Clement, U. S. Surveyor,
from July 13 to 24, 1917, incl., under special in-
structions dated June 7, 1917, issued by A. D. Kiddar,
Supervisor of Surveys, which were approved by the
Commissioner of the General Land Office on June 16,
1917.

Area of lands surveyed - 2,004 acres, not shown
upon previously approved plats.

The undersigned hereby certifies that the survey de-
tailed upon this plat has been executed under his gen-
eral direction and in accordance with the approved spe-
cial instructions issued pursuant to authority contained
in office letter 62264, etc. dated November 2, 1916, ad-
dressed to the Secretary of the Interior (approved Novem-
ber 23, 1916), and letter dated March 21, 1917, address-
ed to the undersigned, and that the field notes and plat
of the survey have been carefully verified.

L. D. [Signature]
Washington, D. C.,
May 1, 1919. Associate Supervisor of Surveys.

DEPARTMENT OF THE INTERIOR
General Land Office
Washington, D. C., May 10, 1919.

The above plat of islands in sections 1, 2, 3, 10 and 11,
T. 44 N., R. 40 W., of the Michigan Meridian, Michigan, is
strictly conformable to the field notes of the survey there-
of, on file in this office, which have been examined and ap-
proved.

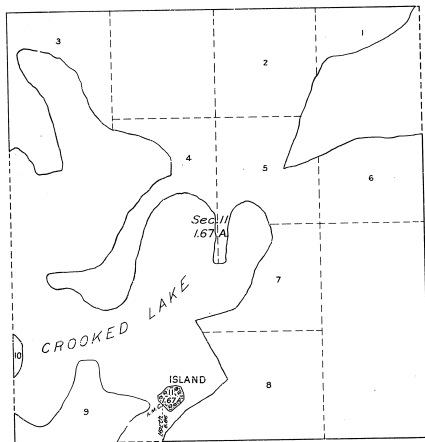
[Signature]
Commissioner and ex-officio U. S. Surveyor
General for Michigan.

PLAT OF AN ISLAND
in
CROOKED LAKE,
in

The SE $\frac{1}{4}$ of the SW $\frac{1}{4}$, Section 11, T44N, R40W, Mich. Mer.
MICHIGAN.

43-30

43-30
⑤



LEGEND

Scale: 10 Chains to an inch.

Surveyed by Albinus N. Kimmel, U.S. Surveyor, on July 2nd
10, 1916, under special instructions dated June 28, 1916, issued
by Arthur D. Kidder, Supervisor of Surveys, bearing the approval of
the Commissioner of the General Land Office, under date of July 3, 1916.

Area of lands surveyed = 1.67 acres, not shown upon the plat approved
July 2, 1852.
Area of previously surveyed lands not shown.

2-10-17

Department of the Interior,
General Land Office,
Washington, D.C., September 25, 1917.
The above plat of an island in Crooked Lake, in the SE $\frac{1}{4}$ of the
SW $\frac{1}{4}$, Section 11, T44N, R40W, Michigan Meridian, Michigan, is strictly
conformable to the field notes of the survey thereof, on file in this
office, which have been examined and approved.



Commissioner and official
U.S. Surveyor-General for Michigan.