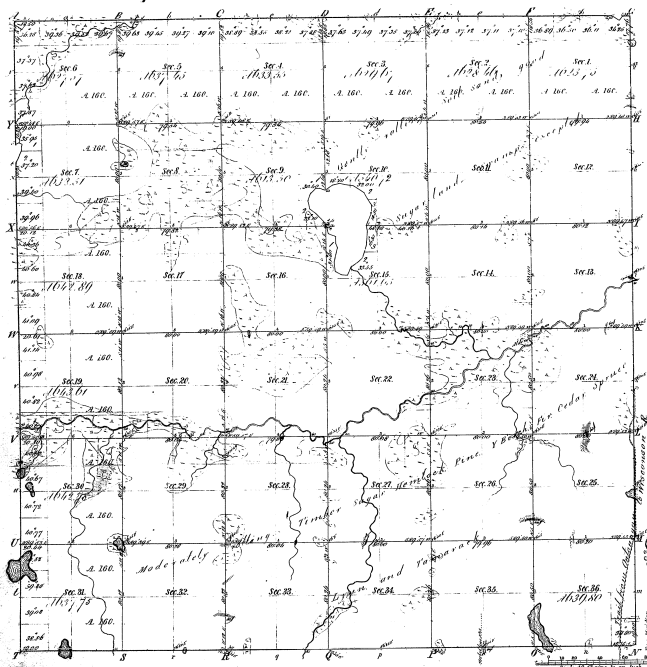


Township 12 45 N Range 12 39 W Mer. Mich.



Abstracts of
 State Courses 1848 State Courses 1848 State Courses 1848

43-26

43-26

Total number of Acres 277 75 66

Survey Designated	By Whom Surveyed	Date of Contract	Amount of Survey	When Surveyed	When the same was returned to the Sur. Gen. office
Township - Range	W. A. McArthur	April 27, 1857	277 75 66	1st Class 1857	
Subdivisions	W. A. McArthur	April 27, 1857	277 75 66	1st Class 1857	

The above copy of Township 12 45 N. Range 12 39 W. 1857 of the Principal Meridian Michigan is strictly conformable to the field notes of the survey thereof on file in this office, which have been examined and approved.

Surveyor General's Office,
 Detroit July 2, 1858.

Charles H. Allen Sur. Gen.