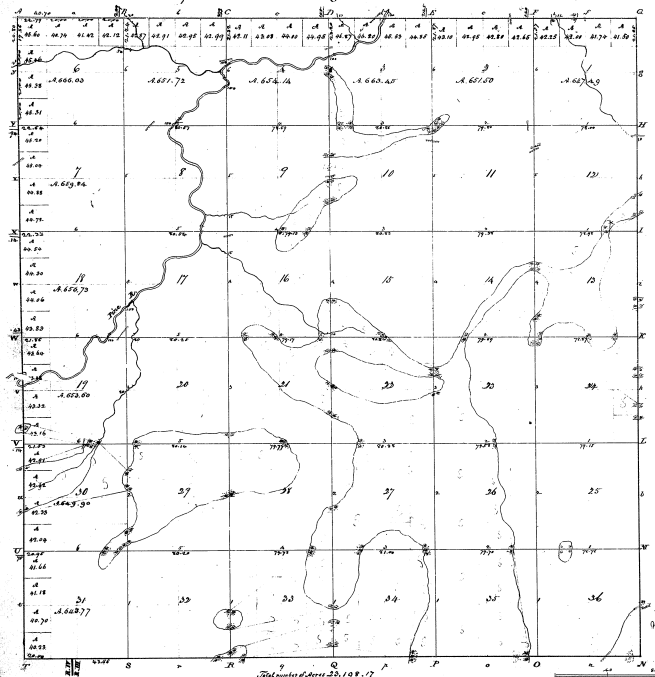


Township *N 31 N.* Range *W 11 W.* Merit. *111 N. 21 W.*



13-38
13-38

Survey completed	By the survey	and of books	and of books
From foundation	R. Clark	17, 18, 19, 20, 21, 22, 23, 24, 25, 26, 27, 28, 29, 30, 31, 32, 33, 34, 35, 36	17, 18, 19, 20, 21, 22, 23, 24, 25, 26, 27, 28, 29, 30, 31, 32, 33, 34, 35, 36
Subdivision	and Wright	Dec. 1832	Dec. 1832

The same set of town & H. West Range 8-22 may contain
 Michigan territory is thereby conformable to the false state
 of the survey made in file in the office, which have been
 examined and approved.

Surveyor General's Office
 Cincinnati Oct 10 1832
 M. T. Williams
 Secy