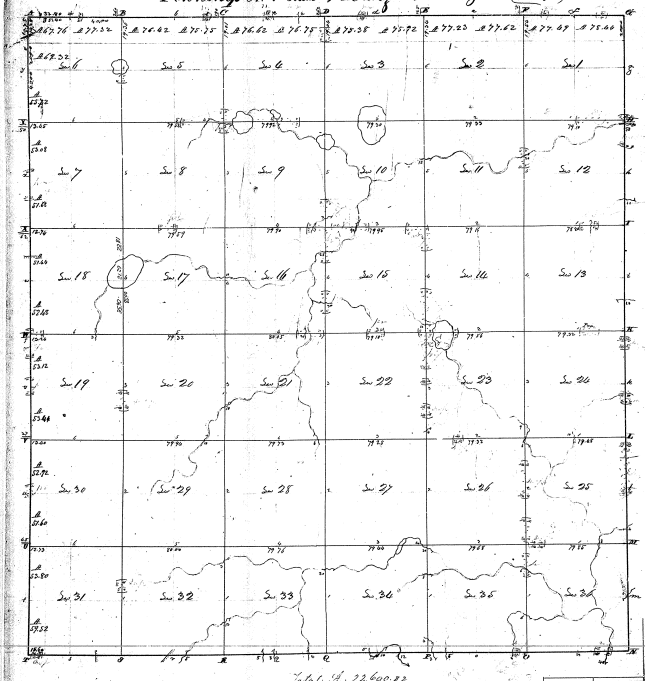


Township N.V. sec. Range N.I. sec. of sec. (cont. Ten)



4-9

4-9

Total A. 2269.22

Returned to a boatman with the instructions from General H. C. Sawyer General of the United States, bearing date the day of
 These admissions laid out and surveyed the above township, and do hereby certify that to these ends the
 mentioned bounds both natural and artificial were ascertained and duly fixed, and shown to be in the true and correct
 thereof and returned with this plat into the Surveyor General's Office, bearing the date of May 1824

Robert Clark Jr. S. S.