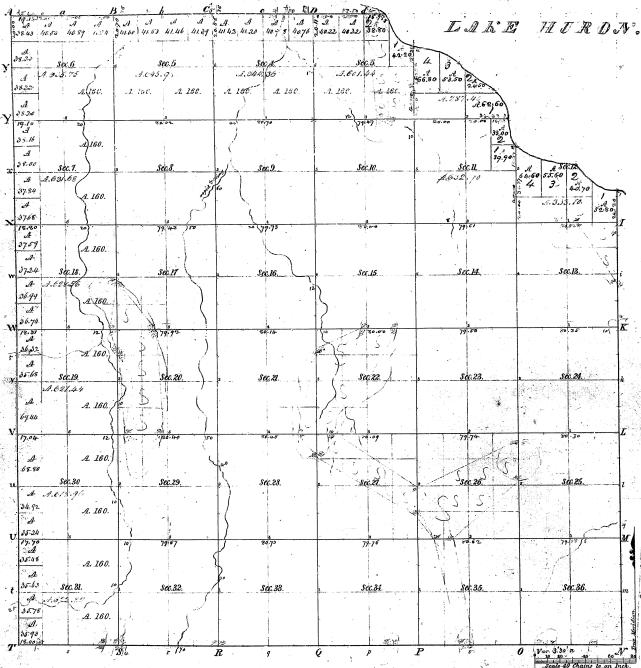


Township N^o 18 N. Range N^o 14 E Mex. Mich.



Measure of 36th Meridian			
Point	Course	Dist	Point
1	S 52° E	16.99	138
2	S 52° E	16.99	139
3	S 52° E	16.99	140
4	S 52° E	16.99	141
5	S 52° E	16.99	142
6	S 52° E	16.99	143
7	S 52° E	16.99	144
8	S 52° E	16.99	145
9	S 52° E	16.99	146
10	S 52° E	16.99	147
11	S 52° E	16.99	148
12	S 52° E	16.99	149
13	S 52° E	16.99	150
14	S 52° E	16.99	151
15	S 52° E	16.99	152
16	S 52° E	16.99	153
17	S 52° E	16.99	154
18	S 52° E	16.99	155
19	S 52° E	16.99	156
20	S 52° E	16.99	157
21	S 52° E	16.99	158
22	S 52° E	16.99	159
23	S 52° E	16.99	160
24	S 52° E	16.99	161
25	S 52° E	16.99	162
26	S 52° E	16.99	163
27	S 52° E	16.99	164
28	S 52° E	16.99	165
29	S 52° E	16.99	166
30	S 52° E	16.99	167
31	S 52° E	16.99	168
32	S 52° E	16.99	169
33	S 52° E	16.99	170
34	S 52° E	16.99	171
35	S 52° E	16.99	172
36	S 52° E	16.99	173

25-2

Total number of acres

Survey designated	By Whom Surveyed	Date of Contract	Amount of Survey	When Surveyed	Placed for sale at the rate of
Township 18 N.	W. H. H. H.	1870	36	1870	1000
Subdivisions	Richard G. H.	May 11, 1870	60	1870	1000

This plan, map of Township N^o 18 N. - of Range N^o 14 E. east of the Principal Meridian, U. S. S. is hereby approved to the full notes of the survey thereof, and the same is confirmed and approved.

Surveyor General Office
 C. B. Smith, Surveyor General