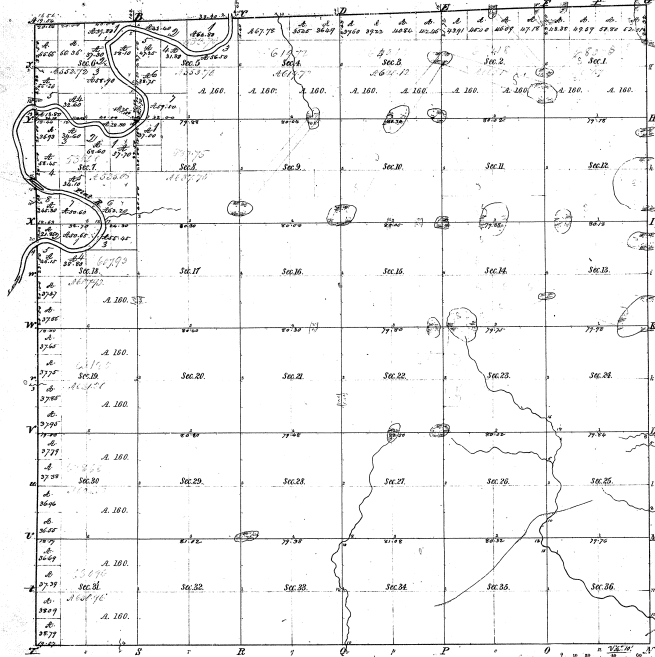


Township N. 7 N., Range N. 8 West Mer. Mich.



Memoranda of Public Survey

Sub-Course	Area	Sub-Course	Area	Sub-Course	Area
1	1750.0	257	7	1750.0	14.00
2	1750.0	258	8	1750.0	14.00
3	1750.0	259	9	1750.0	14.00
4	1750.0	260	10	1750.0	14.00
5	1750.0	261	11	1750.0	14.00
6	1750.0	262	12	1750.0	14.00
7	1750.0	263	13	1750.0	14.00
8	1750.0	264	14	1750.0	14.00
9	1750.0	265	15	1750.0	14.00
10	1750.0	266	16	1750.0	14.00
11	1750.0	267	17	1750.0	14.00
12	1750.0	268	18	1750.0	14.00
13	1750.0	269	19	1750.0	14.00
14	1750.0	270	20	1750.0	14.00
15	1750.0	271	21	1750.0	14.00
16	1750.0	272	22	1750.0	14.00
17	1750.0	273	23	1750.0	14.00
18	1750.0	274	24	1750.0	14.00
19	1750.0	275	25	1750.0	14.00
20	1750.0	276	26	1750.0	14.00
21	1750.0	277	27	1750.0	14.00
22	1750.0	278	28	1750.0	14.00
23	1750.0	279	29	1750.0	14.00
24	1750.0	280	30	1750.0	14.00
25	1750.0	281	31	1750.0	14.00
26	1750.0	282	32	1750.0	14.00
27	1750.0	283	33	1750.0	14.00
28	1750.0	284	34	1750.0	14.00
29	1750.0	285	35	1750.0	14.00
30	1750.0	286	36	1750.0	14.00

91-9

Survey Designated	By Whom Surveyed	Date of Contract	Total number of Acres	Amount of Survey	When Surveyed
1. Township Area	A. Churchfield	Oct. 21, 1836	1296	1296	1837
2. Subdivisions	John Churchfield	Nov. 17, 1837	1296	1296	1837
3. Subdivisions	John Churchfield	Nov. 17, 1837	1296	1296	1837

The above Map of Township N. 7 North of Range N. 8 West of the Principal Meridian, Michigan, is a true and correct copy of the original survey map on file in the office of the Surveyor General of Michigan, and is a true and correct copy of the original survey map on file in the office of the Surveyor General of Michigan, and is a true and correct copy of the original survey map on file in the office of the Surveyor General of Michigan.

Surveyor General's Office  
Continued March 14, 1839

95

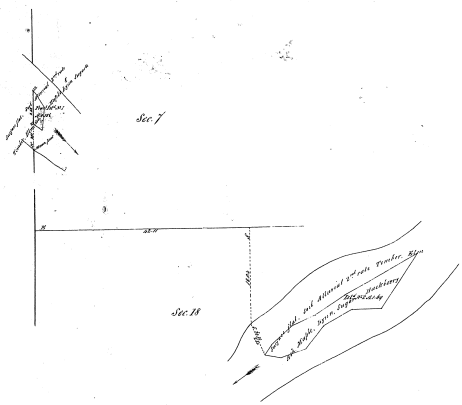
Islands in Flat River

Township N<sup>o</sup> 7 N. Range N<sup>o</sup> 8 W. Mer. Mich.

6-16

6-16

Mount Pleasant



Surveyed by Flat River (under instructions May 20 1856) in 1856

Scale 4 Chains to an inch. No. 1252

The above Map of Township N<sup>o</sup> 7 North of Range N<sup>o</sup> 8 West of the Principal Meridian of Michigan is strictly conformable to the field notes of the Survey thereof on file in this Office which have been examined and approved

Surveyor General's Office  
Detroit April 20<sup>th</sup> 1857

Asst. Surveyor  
Geo. H. ...

1857