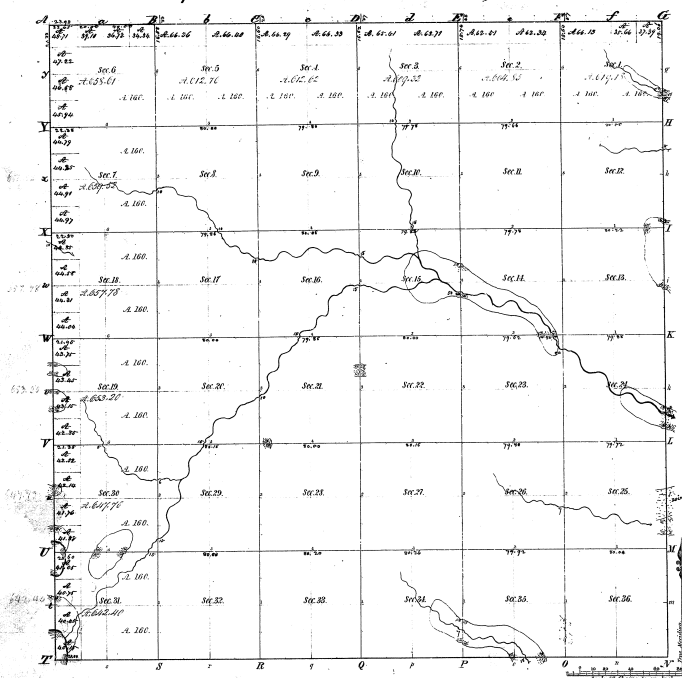


Resurvey
Township 1° 23' N. Range 1° 07' E. (Mich.) Mer.



Boundaries of
 (North Corner) (West Corner) (East Corner) (South Corner)

--	--	--	--

22-30

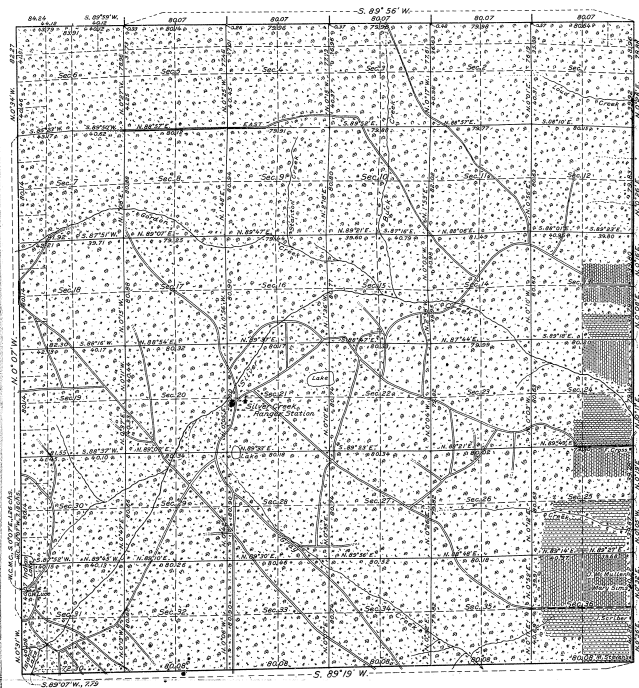
Total number of Acres 22,977.44

Survey Designated	By Whom Surveyed	Date of Contract	Amount of Survey	When Surveyed	How long and what in the last year of same
Township lines	James H. Adams	July 11, 1857	24, 66, 34	2 ^d 1857	July 2, 1857
Subdivisions	Wm. H. Cook	July 7, 1858	59, 69, 92	5 th 1858	July 1, 1858

The above map of Township 1° 23' North of Range 1° 07' East of the Principal Meridian Michigan is a survey conformable to the field notes of the survey being on file in this Office, which have been examined and approved.

Surveyor General's Office
 Ann Arbor, Michigan, 12, 7, 1858
William Johnston
 Sur. Genl.

RESURVEY PLAT
 of
 T. 23 N., R. 7 E., Mich. Mer.
 MICHIGAN.



MEMORANDUM.

This plat of the resurvey of T. 23 N., R. 7 E., of the Michigan Meridian, Michigan, delineates a retracement and reestablishment of the lines of the original survey of the township as shown upon the plat approved May 21, 1884, in their true original position according to the best available evidence of the position of the original corners; all differences between the measurements shown on the original plat and those derived in the retracement have been distributed proportionally between accepted corners in accordance with surveying rules. Titles and areas based upon the original approved plat remain undisturbed for position and description.

LEGEND.

Scale: 1 inch = 40 chains.

Surveyed by Guy H. Veal, U. S. Cadastral Engineer, from July 7 to August 27, 1921, inclusive, under special instructions for Truss No. 2, Michigan, dated June 22, 1921, issued by Arthur S. Kidder, Associate Supervisor of Surveys, which were approved by the Commissioner of the General Land Office on June 23, 1921.

The undersigned hereby certifies that the resurvey delineated upon this plat has been executed under his general direction and in accordance with the approved special instructions, issued pursuant to authority contained in office letter 97810 "P" G.L.O., dated May 13, 1921, and that the field notes and plat of the resurvey have been carefully verified.

Washington, D. C.,
 March 10, 1923.

Arthur S. Kidder
 Associate Supervisor of Surveys.

Department of the Interior,
 General Land Office.

Washington, D. C., March 12, 1923.

The above plat of the resurvey of Township 23 North, Range 7 East, of the Michigan Meridian, in the State of Michigan, is strictly conformable to the field notes of the resurvey thereof, on file in this office, which have been examined and approved.

William Spry
 Commissioner and ex officio
 U. S. Survey General for Michigan.

212
 123
 22-300