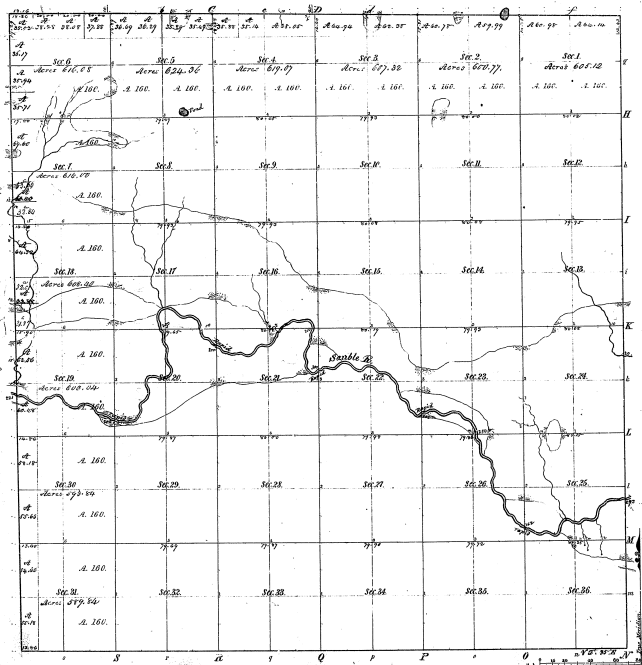


Resurvey Township 1st 24th N. Range 1st 6th E Mer. Mich.



Boundaries of		Boundaries of		Boundaries of	
North Course	West Course	North Course	West Course	North Course	West Course
		22-26			

22-26

Total number of Acres 29 615.86

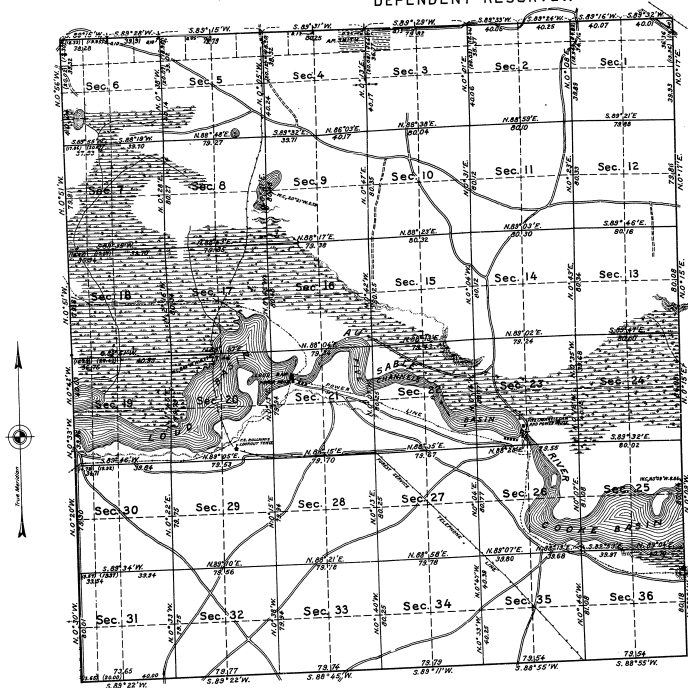
Survey Designated	By Whom Surveyed	Date of Contract	Amount of Survey	When Surveyed	Plan of the and set in the Office
Township Area	Samuel Johnson	Feb. 17 1859	85. 27. 1/4	2-27-59	175 p. 1859
Subdivisions	W. H. Bullitt	Feb. 17 1861	57. 42. 3/4	2-17-61	175 p. 1861

The above Map of Township 1st 24th North of Range 1st 6th East of the Meridian Michigan showing the survey thereon filed in this Office, which has been examined and approved.

Surveyor General's Office
Cincinnati, February 8 1865
W. C. Johnson
Sur. Genl.

S. 26

TOWNSHIP N^o 24 NORTH, RANGE N^o 6 EAST OF THE MICHIGAN MERIDIAN, MICHIGAN.
DEPENDENT RESURVEY.



MEMORANDUM.

THIS PLAT OF THE RESURVEY OF TOWNSHIP 24 NORTH, RANGE 6 EAST, MICHIGAN MERIDIAN, MICHIGAN, DELINEATES A RETRACEMENT AND REESTABLISHMENT OF THE LINES OF THE ORIGINAL SURVEY AS SHOWN UPON THE PLAT APPROVED FEBRUARY 11, 1945, IN THEIR TRUE ORIGINAL POSITIONS ACCORDING TO THE BEST AVAILABLE EVIDENCE OF THE POSITION OF THE ORIGINAL CORNERS. ALL DIFFERENCES BETWEEN THE MEASUREMENTS SHOWN ON THE ORIGINAL PLAT AND THOSE DERIVED IN THE RETRACEMENT HAVE BEEN DISTRIBUTED PROPORTIONALLY BETWEEN ACCEPTED CORNERS IN ACCORDANCE WITH SURVEYING RULES. REFERENCE WILL BE MADE TO THE ORIGINAL PLAT FOR THE SHOWING OF AREAS OF THE VARIOUS SUBDIVISIONS.

THE UPLAND IN THIS TOWNSHIP HAS A SCATTERING GROWTH OF JACK PINE AND BLACK OAK, OF LITTLE VALUE. IN THE SWAMPS THERE IS A FAIR GROWTH OF CEDAR AND TAMARACK, MOSTLY YOUNG TIMBER AND OF LITTLE VALUE. A FEW NORWAY AND WHITE PINES ARE ALSO FOUND IN THE TOWNSHIP. THE CONSUMERS POWER COMPANY HAS A FEW SMALL PLANTATIONS OF YOUNG WHITE PINE ALONG THE SOUTH SIDE OF THE AU SABLE RIVER.

Mean Magnetic Declination,

Scale: 40 Chains to an Inch.

Area Surveyed,

Acres.

LINE DESIGNATED BY WHOM SURVEYED	BY	GROUP	DATE	MILEAGE MILES	WHEN SURVEYED BEGIN	COMPLETED
Exterior	GOV. B. VEAL	17	75-85			
Subdivisional	U. S. C. ENGINEER	59	45-58	JUNE 3,	AUG. 25,	
Meander	W. W. BANDY			1927.	1927.	
Miscellaneous	U. S. SURVEYOR.					

Office of U.S. Supervisor of Surveys
Denver, Colorado Feb. 6, 1928
The above plat of Township No. 24 North, Range No. 6 East,
of the Michigan Meridian, Michigan
is strictly conformable to the field notes of the survey
thereof which have been examined and approved.

W. H. D. D.
Supervisor of Surveys

DEPARTMENT OF THE INTERIOR
GENERAL LAND OFFICE

Washington, D. C., May 4, 1928
The survey represented by this plat
having been correctly executed in accordance
with the requirements of law and the regulations
of this office, is hereby accepted.

A. T. Clark
Acting Assistant Commissioner

22-26-22

APR 30