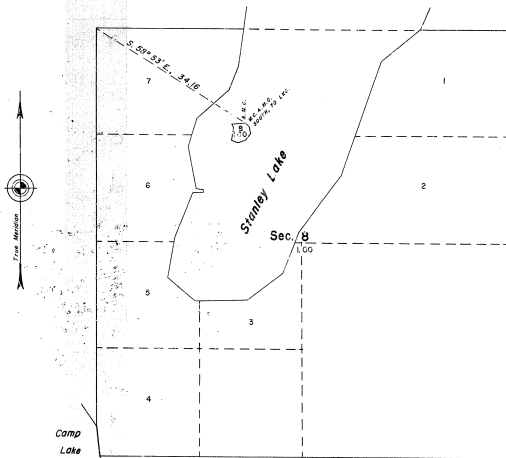


TOWNSHIP 42 NORTH, RANGE 35 WEST, OF THE MICHIGAN MERIDIAN, MICHIGAN
 SURVEY OF ISLAND IN SECTION 8

44-342



This plat represents the survey of an island in Stanley Lake which was not included in the original survey of the township as shown on the plat approved January 24, 1852.

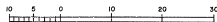
This survey was made by DeWitt A. Crain, Cadastral Surveyor, beginning September 21, 1965, and completed September 28, 1965, pursuant to Special Instructions for Group No. 69, Michigan, dated September 17, 1965.

UNITED STATES DEPARTMENT OF THE INTERIOR
 BUREAU OF LAND MANAGEMENT
 Washington, D. C. March 23, 1966

This plat is strictly conformable to the approved field notes, and the survey, having been correctly executed in accordance with the requirements of law and the regulations of this Bureau, is hereby accepted.

For the Director

Chief, Division of Engineering



Scale in Chains

Area Surveyed: 1.00 Acre