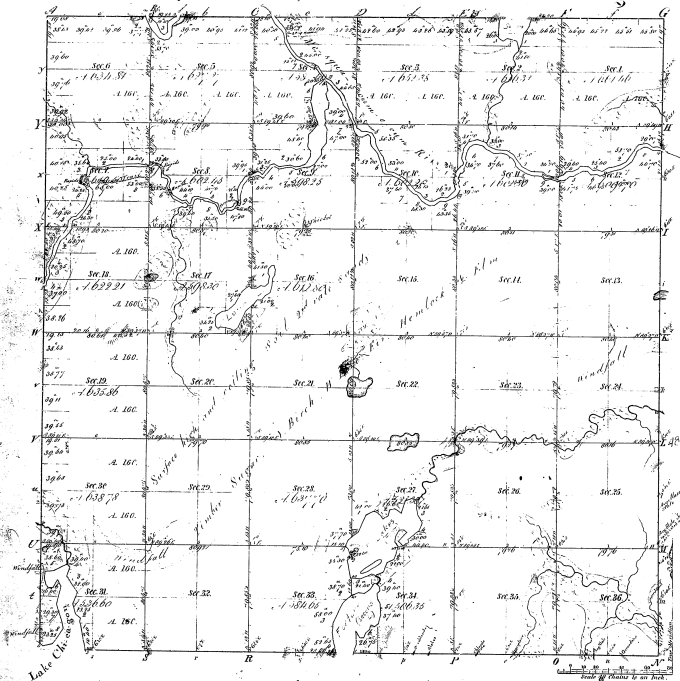


Township 1° 43. N. Range 1° 33. W. Mex. Michigan



Total number of Acres 21,268.80

Survey designated	By whom surveyed	Date of completion	Amount of Acres	When surveyed	By whom surveyed
Pre-emption	W. H. C. C. C. C.	Sept. 7, 1866	36.45	1866	W. H. C. C. C.
Subsequent	W. H. C. C. C.	Sept. 10, 1866	90.03	1866	W. H. C. C. C.

The above map of Township 1° 43. N. of Range 1° 33. W. of the Principal Meridian, Michigan, was as nearly conformable to the full notes of the surveying as the office records have been examined and approved.

James H. ...
 Charles J. ...
 Made At ...

Standard of
 State Courses 1846' Prob Courses 1846' Prob Courses 1846'

44-31

44-31

Measured as
 of 1877

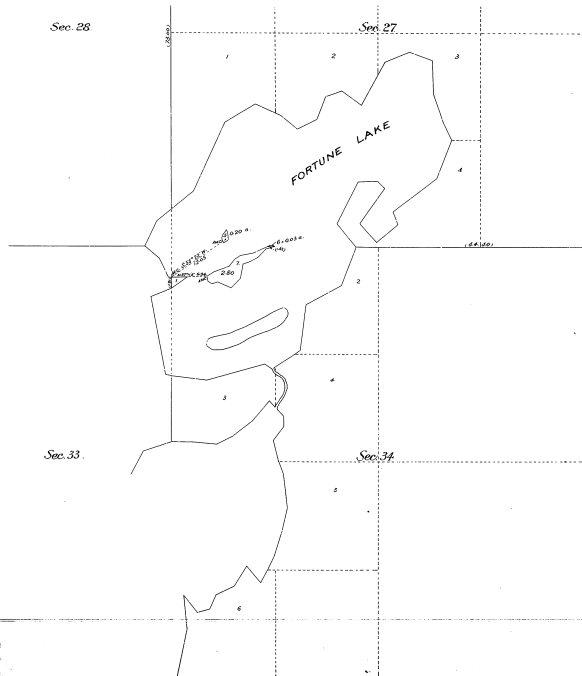
PLAT OF TWO ISLANDS

IN FORTUNE LAKE

IN SECS 27 & 34, T.43 N., R.33 W., MICH. MER.,
MICHIGAN

Executed by Chas M. Pidgeon, U.S. Surveyor, July 16-17, 1911,
under special instructions from the Com' General Land Office, bearing date June 9, 1911.

Scale: 10 Cts to an inch.



44-31
44-31
44-31

Department of the Interior,
General Land Office,
Washington, D.C., Dec. 4, 1912.

The above is a correct plat of survey of two islands in Fortune Lake, in Secs. 27 & 34, T. 43 N., R. 33 W., Michigan Meridian, Michigan, executed by Chas. M. Pidgeon, U.S. Surveyor, in pursuance of special instructions from the Commissioner of the General Land Office, bearing date June 19, 1911, and is directly conformable to the field notes of survey thereof on file in this office, which have been examined and approved.

Paul Bennett

Commissioner and ex-officio
U.S. Surveyor General for Michigan.