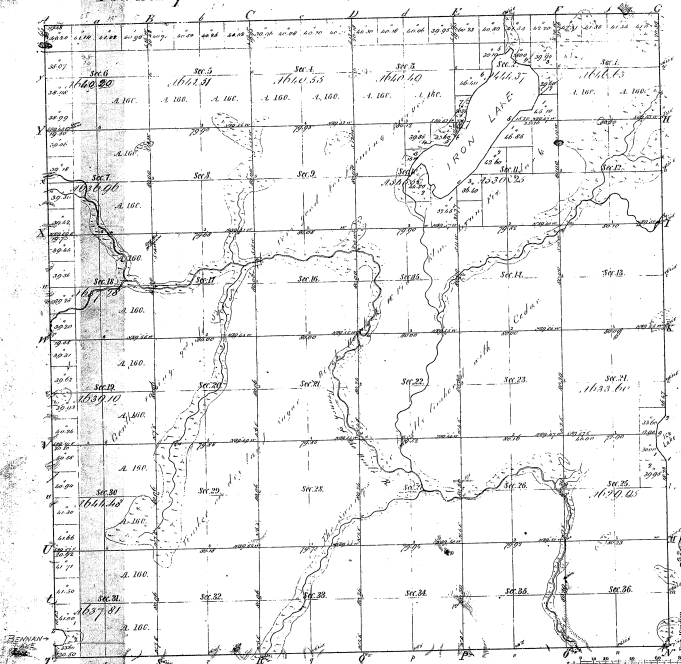


Township 1° 43' N Range 1° 35' W Men. Mich.



Standard of
 1848 1850 1852 1854 1856 1858 1860 1862 1864 1866 1868 1870 1872 1874 1876 1878 1880 1882 1884 1886 1888 1890 1892 1894 1896 1898 1900 1902 1904 1906 1908 1910 1912 1914 1916 1918 1920 1922 1924 1926 1928 1930 1932 1934 1936 1938 1940 1942 1944 1946 1948 1950 1952 1954 1956 1958 1960 1962 1964 1966 1968 1970 1972 1974 1976 1978 1980 1982 1984 1986 1988 1990 1992 1994 1996 1998 2000

44 3

44-33

Standard
 5 miles & ch. 66 ft

Total number of Acres 22548.58

Section	By whom surveyed	Date of Contract	Amount of Survey	When Surveyed	Range of the land in the Survey
1-36	John J. ...	April 11, 1871	22,548.58	1871	1° 35' W

The above copy of Township 1° 43' North of Range 1° 35 West of the Principal Meridian is a true and correct copy of the original survey map on file in the Office, which has been examined and approved.

Survey General Office
 Dec. 6, Jan 24, 1872
 Charles H. ...
 Geo. ...