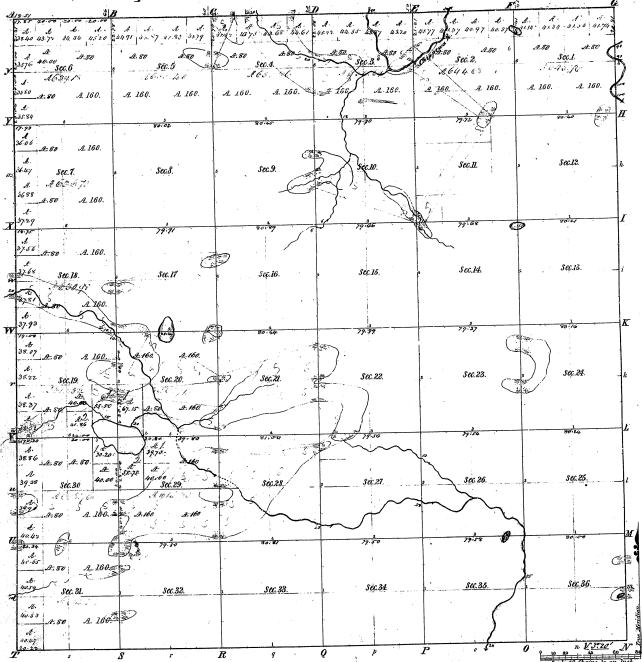


Township N^o 14 N., Range N^o 6 West Mer. (Mich.)



Numbers of a Lake in Sections 17, 20, 27, 30, 33, 34, 35, 36

Section	17	20	27	30	33	34	35	36
1	1775	625						
2	1780	630						
3	1785	635						
4	1790	640						
5	1795	645						
6	1800	650						
7	1805	655						
8	1810	660						
9	1815	665						
10	1820	670						
11	1825	675						
12	1830	680						
13	1835	685						
14	1840	690						
15	1845	695						
16	1850	700						
17	1855	705						
18	1860	710						
19	1865	715						
20	1870	720						
21	1875	725						
22	1880	730						
23	1885	735						
24	1890	740						
25	1895	745						
26	1900	750						
27	1905	755						
28	1910	760						
29	1915	765						
30	1920	770						
31	1925	775						
32	1930	780						
33	1935	785						
34	1940	790						
35	1945	795						
36	1950	800						

12-21

12-27

Total number of acres

Survey designated	By whom surveyed	Date of Contract	Amount of Survey	When Surveyed	Amount of land sold to the Govt. and
Township 14 N.	Wm. H. Miller	11. 22. 1837	36. 36. 36	1837	36. 36. 36
Subdivisions	Wm. H. Miller	11. 27	36. 36. 36	1837	36. 36. 36

The above copy of Township N^o 14 North of Range N^o 6 West of the Principal Meridian is hereby approved to the field notes of the survey thereon, inasmuch as the latter has been examined and approved.

Surveyor-General's Office
Cincinnati, May 25, 1839

C. Brain Surveyor-General