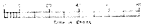
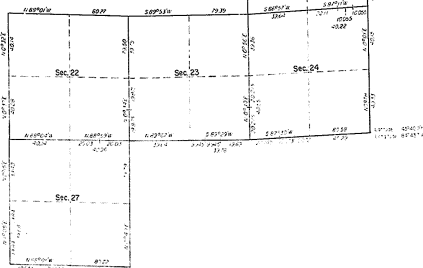
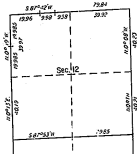
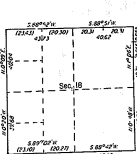




TOWNSHIP 15 NORTH, RANGE 4 WEST OF THE MICHIGAN MERIDIAN, MICHIGAN.  
DEPENDENT RESURVEY

13-21



A history of surveys is contained in the field note record.

This plat represents the dependent resurvey of a portion of the east and west boundaries, and a portion of the subdivisional lines designed to restore the corners to their true original locations according to the best available evidence, T. 15 N., R. 4 W., Michigan Meridian, Michigan.

The lottings and areas are as shown on the plat approved June 7, 1895.

Survey executed by Michael J. Avery, Cadastral Surveyor, beginning May 24, 1927, and completed June 9, 1932, pursuant to Special Instructions for Group No. 25, Michigan, dated September 18, 1931.

UNITED STATES DEPARTMENT OF THE INTERIOR  
BUREAU OF LAND MANAGEMENT  
Manassas, Virginia October 5, 1933

This plat is strictly conformable to the original field notes, and the survey, having been correctly executed in accordance with the requirements of law and the regulations of the Bureau, is hereby approved.

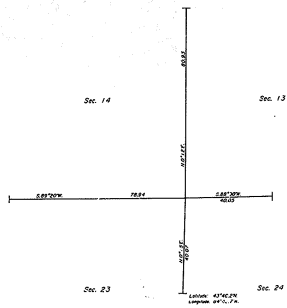
For the Director

*Michael J. Avery*

Chief Cadastral Surveyor  
District Office 10110

13-21

TOWNSHIP 15 NORTH, RANGE 4 WEST, OF THE MICHIGAN MERIDIAN, MICHIGAN.  
CORRECTIVE DEPENDENT RESURVEY



A history of surveys is contained in the field note record.  
This plat represents the corrective reestablishment of the 1/4 section corner and the corrective establishment of the SW 1/4 section corner between sections 1 and 12, and the reworkment of certain subdivisional lines designed to return the corners to their true original locations according to the best available evidence, T. 15 N., R. 4 W., Michigan Meridian, Michigan.  
The settings and areas are as shown on the plat approved June 7, 1937.  
Survey executed by Stephen G. Douglas, Cadastral Surveyor, beginning April 29, 1936, and completed April 29, 1936, pursuant to Conditional Special Instructions For Group No. 25, Michigan, dated December 12, 1935.

UNITED STATES DEPARTMENT OF THE INTERIOR  
BUREAU OF LAND MANAGEMENT  
Alexandria, Virginia June 12, 1937

This plat is strictly conformable to the approved field notes, and the survey, having been correctly executed in accordance with the requirements of law and the regulations of this Bureau, is hereby accepted.

For the Director  
*Joseph D. ...*  
Chief Cadastral Surveyor  
Eastern States Office

