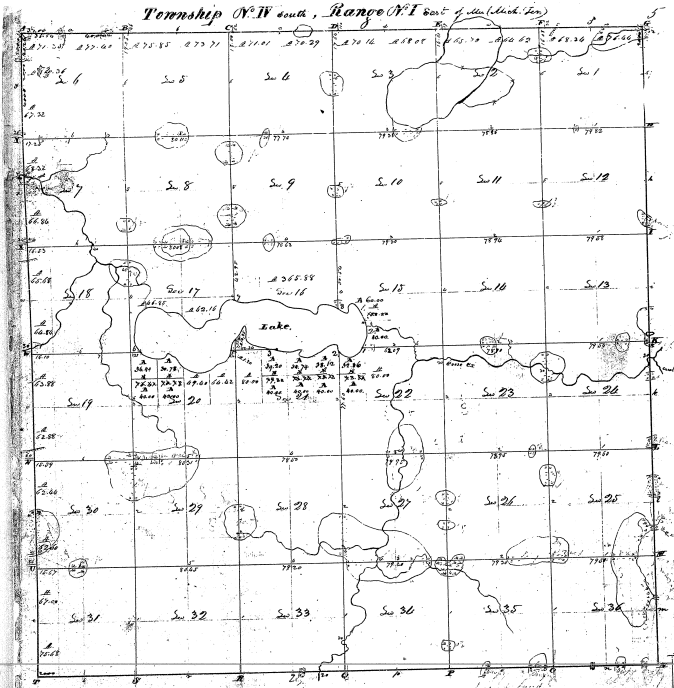


Township N. IV south, Range N. I east of the (black line)



Filed A. 29. 1846

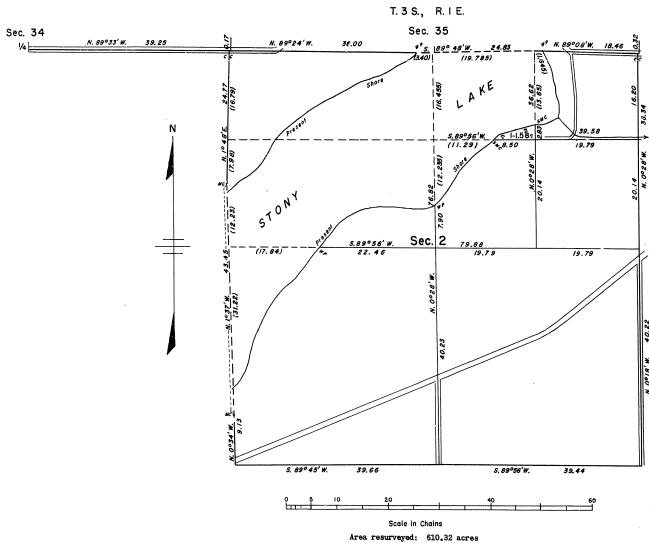
Committed to exhibit with and instructions from Recorder for lawyer General of this State, bearing date the 10th day of June, 1846, and his return during the above month, he do hereby certify that he has such records and records both correct and certified, as are represented on said plate and described in this public notice, more than an extract with the plate, into the lawyer General's office, but after the 31st day of May, 1846.

Robert C. ...

1846

30-130

TOWNSHIP 4 SOUTH, RANGE 1 EAST, MICHIGAN MERIDIAN, MICHIGAN
RESURVEY AND PARTIAL SUBDIVISION, SECTION 2



This plat represents a retracement and reestablishment of the boundaries of Section 2, designed to restore all corners in their true original locations as shown upon the plat of the original survey approved July 7, 1954. The section has been subdivided as required to determine the extent of the public land remaining within the $36\frac{1}{2}$ acre, which has been redesignated as Lot 1. The shore line of Stony Lake has been accurately meandered in front of that subdivision.

Surveyed by Hugh B. Crawford, Cadastral Engineer, from November 18, 1954 to June 9, 1955, pursuant to Special Instructions for Group 62, Michigan, dated August 12, 1954.

UNITED STATES DEPARTMENT OF THE INTERIOR
BUREAU OF LAND MANAGEMENT
Washington, D. C. March 29, 1956

This plat is strictly conformable to the approved field notes, and the survey, having been correctly executed in accordance with the requirements of law and the regulations of this Bureau, is hereby accepted.

For the Director
Donald C. ...

Acting Cadastral Engineering Staff Officer