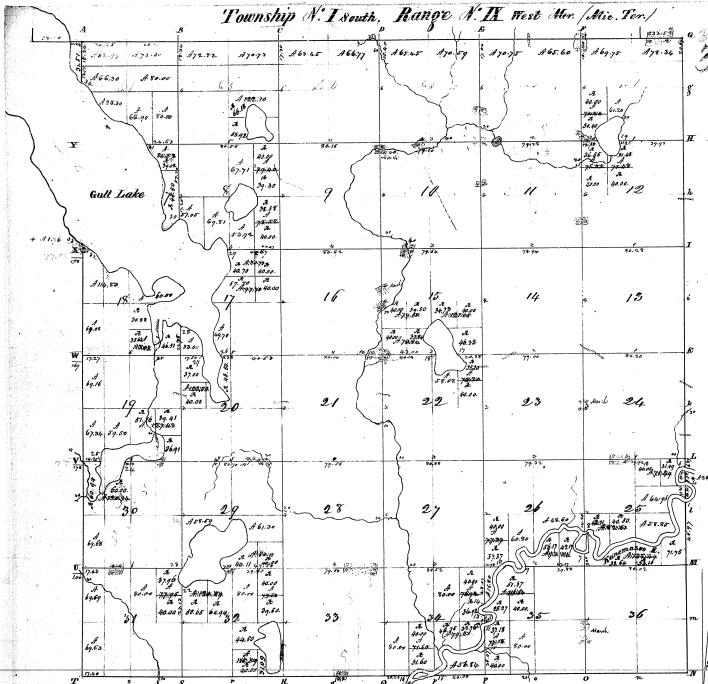


Township N. 1 South, Range N. 12 West Mer. (Mic. Ton.)



Copy

Surveyed in December 1924 by John Muttell A.S.

Scale 400 ft. to an inch

		Acres		Acres	
Sec.	Area	Sec.	Area	Sec.	Area
1	78.20	18	60.00	27	118.02
2	80.00	19	71.89	28	114.93
3	69.75	20	73.84	29	110.02
4	80.00	21	80.70	30	82.00
5	164.00	22	80.00	31	69.28
6	81.20	23	70.75	32	77.10
7	70.40	24	80.00	33	71.10
8	80.00	25	80.00	34	60.00
9	207.50	26	70.75	35	73.25
10	80.00	27	80.00	36	70.00
11	222.00	28	80.00		
12	71.59	29	80.00		
13	80.00	30	63.65		
14	80.00	31	32.00		
15	80.00	32	86.77		
16	80.00	33	80.00		
17	80.00	34	85.65		
18	80.00	35	80.00		
19	80.00	36	80.00		
20	80.00				
21	80.00				
22	80.00				
23	80.00				
24	80.00				
25	80.00				
26	80.00				
27	80.00				
28	80.00				
29	80.00				
30	80.00				
31	80.00				
32	80.00				
33	80.00				
34	80.00				
35	80.00				
36	80.00				

73

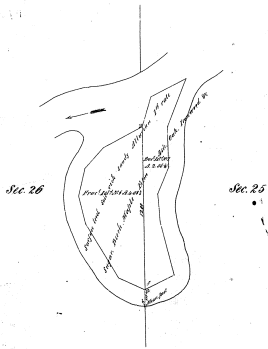
73.4

Island in Kalamazoo River

Township N^o 1 S. Range N^o 9 W. Mer. Mich.

3-2

3-2



Surveyed by Thos. Whitley (under Instructions May 24th 1854) in 1856

Scale 4 Chains to an Inch No 2.18.11

*The above Map of Township N^o 1 South of Range N^o 9 West of the
 Principal Meridian of Michigan is strictly conformable to the field notes
 of the Survey thereof on file in this Office, which have been examined and approved
 Surveyor General Office
 Dated April 19th 1857*

*R. L. Spencer
 Secy*