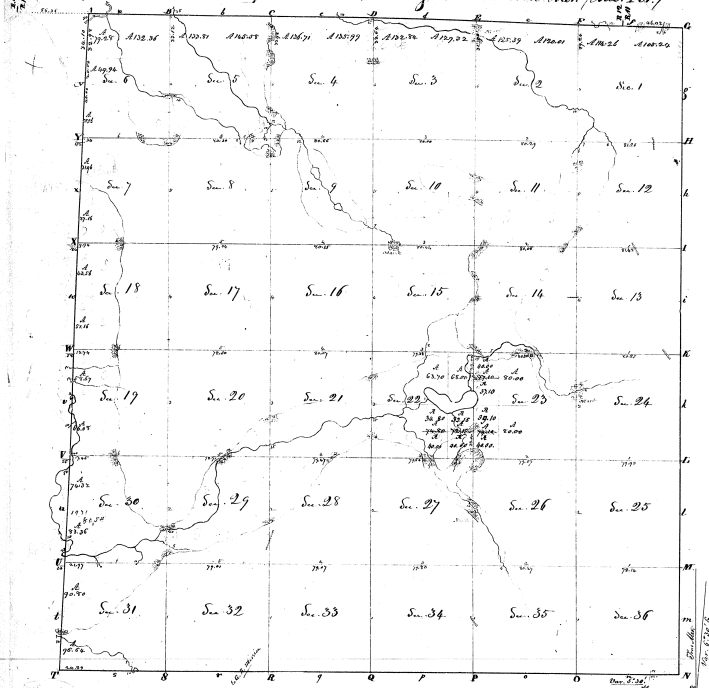


Township N. 1 South, Range N. XII West, Mer. (McC. Ter.)



Surveyed in January 1830 by Robert Blackman S.S.

2-3

Contents		Contents	
No. Pages	Value	No. Pages	Value
Ac. 175 1	100 20	Ec. 175	250
Ac. "	30	Ec. 176	30
Ac. 176	110 25	Ec. 177	50 1/2
Ac. "	30	Ec. 178	80
Ac. "	30	Ec. "	60 1/2
Ac. 175 2	120 1/2	Ac. 20	60 1/2
Ac. "	30	Ac. "	30
Ac. 176 2	120 1/2	Ec. 175 2	250
Ac. "	30	Ec. 176 2	100 1/2
Ac. 175 3	120 1/2	Ec. 177 2	100 1/2
Ac. "	30	Ec. 178 2	100 1/2
Ac. 176 3	120 1/2	Ec. 179 2	100 1/2
Ac. "	30	Ec. 180 2	100 1/2
Ac. 175 4	120 1/2	Ec. 181 2	100 1/2
Ac. "	30	Ec. 182 2	100 1/2
Ac. 176 4	120 1/2	Ec. 183 2	100 1/2
Ac. "	30	Ec. 184 2	100 1/2
Ac. 175 5	120 1/2	Ec. 185 2	100 1/2
Ac. "	30	Ec. 186 2	100 1/2
Ac. 176 5	120 1/2	Ec. 187 2	100 1/2
Ac. "	30	Ec. 188 2	100 1/2
Ac. 175 6	120 1/2	Ec. 189 2	100 1/2
Ac. "	30	Ec. 190 2	100 1/2
Ac. 176 6	120 1/2	Ec. 191 2	100 1/2
Ac. "	30	Ec. 192 2	100 1/2
Ac. 175 7	120 1/2	Ec. 193 2	100 1/2
Ac. "	30	Ec. 194 2	100 1/2
Ac. 176 7	120 1/2	Ec. 195 2	100 1/2
Ac. "	30	Ec. 196 2	100 1/2
Ac. 175 8	120 1/2	Ec. 197 2	100 1/2
Ac. "	30	Ec. 198 2	100 1/2
Ac. 176 8	120 1/2	Ec. 199 2	100 1/2
Ac. "	30	Ec. 200 2	100 1/2
Ac. 175 9	120 1/2	Ec. 201 2	100 1/2
Ac. "	30	Ec. 202 2	100 1/2
Ac. 176 9	120 1/2	Ec. 203 2	100 1/2
Ac. "	30	Ec. 204 2	100 1/2
Ac. 175 10	120 1/2	Ec. 205 2	100 1/2
Ac. "	30	Ec. 206 2	100 1/2
Ac. 176 10	120 1/2	Ec. 207 2	100 1/2
Ac. "	30	Ec. 208 2	100 1/2
Ac. 175 11	120 1/2	Ec. 209 2	100 1/2
Ac. "	30	Ec. 210 2	100 1/2
Ac. 176 11	120 1/2	Ec. 211 2	100 1/2
Ac. "	30	Ec. 212 2	100 1/2
Ac. 175 12	120 1/2	Ec. 213 2	100 1/2
Ac. "	30	Ec. 214 2	100 1/2
Ac. 176 12	120 1/2	Ec. 215 2	100 1/2
Ac. "	30	Ec. 216 2	100 1/2
Ac. 175 13	120 1/2	Ec. 217 2	100 1/2
Ac. "	30	Ec. 218 2	100 1/2
Ac. 176 13	120 1/2	Ec. 219 2	100 1/2
Ac. "	30	Ec. 220 2	100 1/2
Ac. 175 14	120 1/2	Ec. 221 2	100 1/2
Ac. "	30	Ec. 222 2	100 1/2
Ac. 176 14	120 1/2	Ec. 223 2	100 1/2
Ac. "	30	Ec. 224 2	100 1/2
Ac. 175 15	120 1/2	Ec. 225 2	100 1/2
Ac. "	30	Ec. 226 2	100 1/2
Ac. 176 15	120 1/2	Ec. 227 2	100 1/2
Ac. "	30	Ec. 228 2	100 1/2
Ac. 175 16	120 1/2	Ec. 229 2	100 1/2
Ac. "	30	Ec. 230 2	100 1/2
Ac. 176 16	120 1/2	Ec. 231 2	100 1/2
Ac. "	30	Ec. 232 2	100 1/2
Ac. 175 17	120 1/2	Ec. 233 2	100 1/2
Ac. "	30	Ec. 234 2	100 1/2
Ac. 176 17	120 1/2	Ec. 235 2	100 1/2
Ac. "	30	Ec. 236 2	100 1/2
Ac. 175 18	120 1/2	Ec. 237 2	100 1/2
Ac. "	30	Ec. 238 2	100 1/2
Ac. 176 18	120 1/2	Ec. 239 2	100 1/2
Ac. "	30	Ec. 240 2	100 1/2
Ac. 175 19	120 1/2	Ec. 241 2	100 1/2
Ac. "	30	Ec. 242 2	100 1/2
Ac. 176 19	120 1/2	Ec. 243 2	100 1/2
Ac. "	30	Ec. 244 2	100 1/2
Ac. 175 20	120 1/2	Ec. 245 2	100 1/2
Ac. "	30	Ec. 246 2	100 1/2
Ac. 176 20	120 1/2	Ec. 247 2	100 1/2
Ac. "	30	Ec. 248 2	100 1/2
Ac. 175 21	120 1/2	Ec. 249 2	100 1/2
Ac. "	30	Ec. 250 2	100 1/2
Ac. 176 21	120 1/2	Ec. 251 2	100 1/2
Ac. "	30	Ec. 252 2	100 1/2
Ac. 175 22	120 1/2	Ec. 253 2	100 1/2
Ac. "	30	Ec. 254 2	100 1/2
Ac. 176 22	120 1/2	Ec. 255 2	100 1/2
Ac. "	30	Ec. 256 2	100 1/2
Ac. 175 23	120 1/2	Ec. 257 2	100 1/2
Ac. "	30	Ec. 258 2	100 1/2
Ac. 176 23	120 1/2	Ec. 259 2	100 1/2
Ac. "	30	Ec. 260 2	100 1/2
Ac. 175 24	120 1/2	Ec. 261 2	100 1/2
Ac. "	30	Ec. 262 2	100 1/2
Ac. 176 24	120 1/2	Ec. 263 2	100 1/2
Ac. "	30	Ec. 264 2	100 1/2
Ac. 175 25	120 1/2	Ec. 265 2	100 1/2
Ac. "	30	Ec. 266 2	100 1/2
Ac. 176 25	120 1/2	Ec. 267 2	100 1/2
Ac. "	30	Ec. 268 2	100 1/2
Ac. 175 26	120 1/2	Ec. 269 2	100 1/2
Ac. "	30	Ec. 270 2	100 1/2
Ac. 176 26	120 1/2	Ec. 271 2	100 1/2
Ac. "	30	Ec. 272 2	100 1/2
Ac. 175 27	120 1/2	Ec. 273 2	100 1/2
Ac. "	30	Ec. 274 2	100 1/2
Ac. 176 27	120 1/2	Ec. 275 2	100 1/2
Ac. "	30	Ec. 276 2	100 1/2
Ac. 175 28	120 1/2	Ec. 277 2	100 1/2
Ac. "	30	Ec. 278 2	100 1/2
Ac. 176 28	120 1/2	Ec. 279 2	100 1/2
Ac. "	30	Ec. 280 2	100 1/2
Ac. 175 29	120 1/2	Ec. 281 2	100 1/2
Ac. "	30	Ec. 282 2	100 1/2
Ac. 176 29	120 1/2	Ec. 283 2	100 1/2
Ac. "	30	Ec. 284 2	100 1/2
Ac. 175 30	120 1/2	Ec. 285 2	100 1/2
Ac. "	30	Ec. 286 2	100 1/2
Ac. 176 30	120 1/2	Ec. 287 2	100 1/2
Ac. "	30	Ec. 288 2	100 1/2
Ac. 175 31	120 1/2	Ec. 289 2	100 1/2
Ac. "	30	Ec. 290 2	100 1/2
Ac. 176 31	120 1/2	Ec. 291 2	100 1/2
Ac. "	30	Ec. 292 2	100 1/2
Ac. 175 32	120 1/2	Ec. 293 2	100 1/2
Ac. "	30	Ec. 294 2	100 1/2
Ac. 176 32	120 1/2	Ec. 295 2	100 1/2
Ac. "	30	Ec. 296 2	100 1/2
Ac. 175 33	120 1/2	Ec. 297 2	100 1/2
Ac. "	30	Ec. 298 2	100 1/2
Ac. 176 33	120 1/2	Ec. 299 2	100 1/2
Ac. "	30	Ec. 300 2	100 1/2
Ac. 175 34	120 1/2	Ec. 301 2	100 1/2
Ac. "	30	Ec. 302 2	100 1/2
Ac. 176 34	120 1/2	Ec. 303 2	100 1/2
Ac. "	30	Ec. 304 2	100 1/2
Ac. 175 35	120 1/2	Ec. 305 2	100 1/2
Ac. "	30	Ec. 306 2	100 1/2
Ac. 176 35	120 1/2	Ec. 307 2	100 1/2
Ac. "	30	Ec. 308 2	100 1/2
Ac. 175 36	120 1/2	Ec. 309 2	100 1/2
Ac. "	30	Ec. 310 2	100 1/2
Ac. 176 36	120 1/2	Ec. 311 2	100 1/2
Ac. "	30	Ec. 312 2	100 1/2
Ac. 175 37	120 1/2	Ec. 313 2	100 1/2
Ac. "	30	Ec. 314 2	100 1/2
Ac. 176 37	120 1/2	Ec. 315 2	100 1/2
Ac. "	30	Ec. 316 2	100 1/2
Ac. 175 38	120 1/2	Ec. 317 2	100 1/2
Ac. "	30	Ec. 318 2	100 1/2
Ac. 176 38	120 1/2	Ec. 319 2	100 1/2
Ac. "	30	Ec. 320 2	100 1/2
Ac. 175 39	120 1/2	Ec. 321 2	100 1/2
Ac. "	30	Ec. 322 2	100 1/2
Ac. 176 39	120 1/2	Ec. 323 2	100 1/2
Ac. "	30	Ec. 324 2	100 1/2
Ac. 175 40	120 1/2	Ec. 325 2	100 1/2
Ac. "	30	Ec. 326 2	100 1/2
Ac. 176 40	120 1/2	Ec. 327 2	100 1/2
Ac. "	30	Ec. 328 2	100 1/2
Ac. 175 41	120 1/2	Ec. 329 2	100 1/2
Ac. "	30	Ec. 330 2	100 1/2
Ac. 176 41	120 1/2	Ec. 331 2	100 1/2
Ac. "	30	Ec. 332 2	100 1/2
Ac. 175 42	120 1/2	Ec. 333 2	100 1/2
Ac. "	30	Ec. 334 2	100 1/2
Ac. 176 42	120 1/2	Ec. 335 2	100 1/2
Ac. "	30	Ec. 336 2	100 1/2
Ac. 175 43	120 1/2	Ec. 337 2	100 1/2
Ac. "	30	Ec. 338 2	100 1/2
Ac. 176 43	120 1/2	Ec. 339 2	100 1/2
Ac. "	30	Ec. 340 2	100 1/2
Ac. 175 44	120 1/2	Ec. 341 2	100 1/2
Ac. "	30	Ec. 342 2	100 1/2
Ac. 176 44	120 1/2	Ec. 343 2	100 1/2
Ac. "	30	Ec. 344 2	100 1/2
Ac. 175 45	120 1/2	Ec. 345 2	100 1/2
Ac. "	30	Ec. 346 2	100 1/2
Ac. 176 45	120 1/2	Ec. 347 2	100 1/2
Ac. "	30	Ec. 348 2	100 1/2
Ac. 175 46	120 1/2	Ec. 349 2	100 1/2
Ac. "	30	Ec. 350 2	100 1/2
Ac. 176 46	120 1/2	Ec. 351 2	100 1/2
Ac. "	30	Ec. 352 2	100 1/2
Ac. 175 47	120 1/2	Ec. 353 2	100 1/2
Ac. "	30	Ec. 354 2	100 1/2
Ac. 176 47	120 1/2	Ec. 355 2	100 1/2
Ac. "	30	Ec. 356 2	100 1/2
Ac. 175 48	120 1/2	Ec. 357 2	100 1/2
Ac. "	30	Ec. 358 2	100 1/2
Ac. 176 48	120 1/2	Ec. 359 2	100 1/2
Ac. "	30	Ec. 360 2	100 1/2
Ac. 175 49	120 1/2	Ec. 361 2	100 1/2
Ac. "	30	Ec. 362 2	100 1/2
Ac. 176 49	120 1/2	Ec. 363 2	100 1/2
Ac. "	30	Ec. 364 2	100 1/2
Ac. 175 50	120 1/2	Ec. 365 2	100 1/2
Ac. "	30	Ec. 366 2	100 1/2
Ac. 176 50	120 1/2	Ec. 367 2	100 1/2
Ac. "	30	Ec. 368 2	100 1/2
Ac. 175 51	120 1/2	Ec. 369 2	100 1/2
Ac. "	30	Ec. 370 2	100 1/2
Ac. 176 51	120 1/2	Ec. 371 2	100 1/2
Ac. "	30	Ec. 372 2	100 1/2
Ac. 175 52	120 1/2	Ec. 373 2	100 1/2
Ac. "	30	Ec. 374 2	100 1/2
Ac. 176 52	120 1/2	Ec. 375 2	100 1/2
Ac. "	30	Ec. 376 2	100 1/2
Ac. 175 53	120 1/2	Ec. 377 2	100 1/2
Ac. "	30	Ec. 378 2	100 1/2
Ac. 176 53	120 1/2	Ec. 379 2	100 1/2
Ac. "	30	Ec. 380 2	100 1/2
Ac. 175 54	120 1/2	Ec. 381 2	100 1/2
Ac. "	30	Ec. 382 2	100 1/2