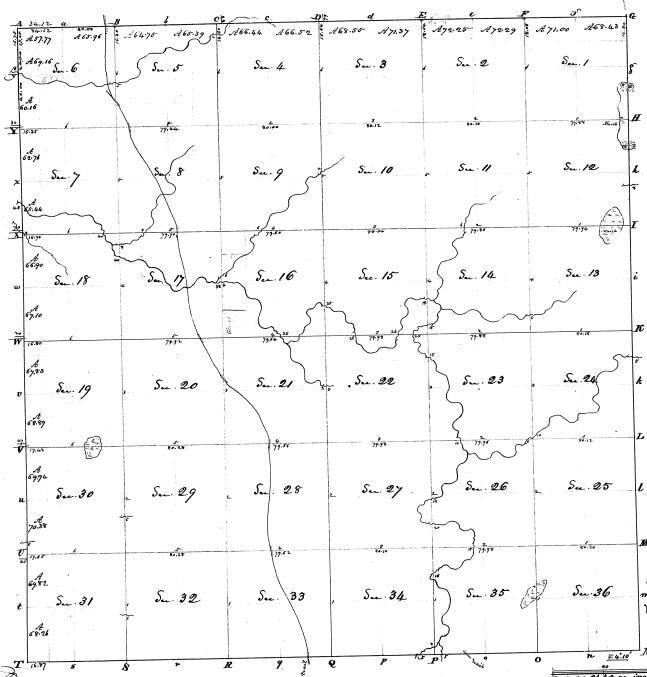


Township N. VI North, Range N. XI West Mer. (M.C. Ter.)



Sections		Contents		Sections		Contents	
Sec.	Acres	Sec.	Acres	Sec.	Acres	Sec.	Acres
1	64.00	6	64.00	11	64.00	16	64.00
2	64.00	7	64.00	12	64.00	17	64.00
3	64.00	8	64.00	13	64.00	18	64.00
4	64.00	9	64.00	14	64.00	19	64.00
5	64.00	10	64.00	15	64.00	20	64.00
6	64.00	11	64.00	16	64.00	21	64.00
7	64.00	12	64.00	17	64.00	22	64.00
8	64.00	13	64.00	18	64.00	23	64.00
9	64.00	14	64.00	19	64.00	24	64.00
10	64.00	15	64.00	20	64.00	25	64.00
11	64.00	16	64.00	21	64.00	26	64.00
12	64.00	17	64.00	22	64.00	27	64.00
13	64.00	18	64.00	23	64.00	28	64.00
14	64.00	19	64.00	24	64.00	29	64.00
15	64.00	20	64.00	25	64.00	30	64.00
16	64.00	21	64.00	26	64.00	31	64.00
17	64.00	22	64.00	27	64.00	32	64.00
18	64.00	23	64.00	28	64.00	33	64.00
19	64.00	24	64.00	29	64.00	34	64.00
20	64.00	25	64.00	30	64.00	35	64.00
21	64.00	26	64.00	31	64.00	36	64.00
22	64.00	27	64.00				
23	64.00	28	64.00				
24	64.00	29	64.00				
25	64.00	30	64.00				
26	64.00	31	64.00				
27	64.00	32	64.00				
28	64.00	33	64.00				
29	64.00	34	64.00				
30	64.00	35	64.00				
31	64.00	36	64.00				
32	64.00						
33	64.00						
34	64.00						
35	64.00						
36	64.00						

Comp.

Surveyed in January 1831, by John McMillan, S.S.

The above maps of Township N. VI North, Range N. XI West Mer. (M.C. Ter.) is true and conformable to the full notes of the Survey thereof on file in this Office, which have been examined & approved.  
 Surveyor General's Office  
 Cincinnati, Dec. 6th 1831  
 M. T. Williams  
 Sec. Genl.

137

1-1-18