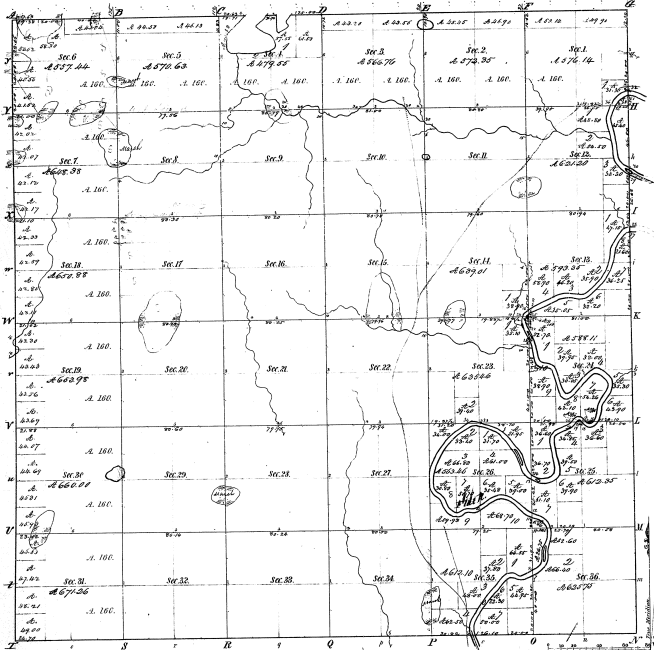


Township 1° 4' N. Range 1° 0' West Mer. (Mich.)



Total number of Acres 2338.66

Survey Designated	By Whom Surveyed	Date of Contract	Amount of Survey	When Surveyed	Where the Survey was made
Township lines	John Campbell	Oct. 21, 1836	36.00	1837	the East 1/2 of the Township
Subdivisions	John Campbell	March, 1837	36.00	1837	the East 1/2 of the Township
the 1/2 Boundary	George Cooper		6.66	1837	

The above copy of Township 1° 4' North of Range 1° 0' West of the Principal Meridian Michigan is a duly certified to the field notes of the survey thereon on file in this office which have been examined and approved.

Surveyor General's Office
Ann Arbor, Feb. 21, 1839

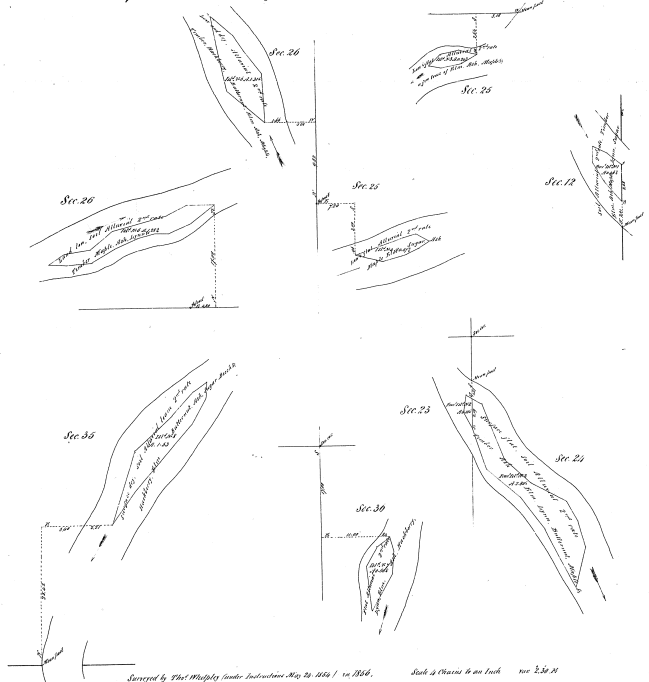
Prob. Course	Dist.	Prob. Course	Dist.	Prob. Course	
				Dist.	Prob. Course
1	178.0	178.0	178.0	178.0	178.0
2	178.0	178.0	178.0	178.0	178.0
3	178.0	178.0	178.0	178.0	178.0
4	178.0	178.0	178.0	178.0	178.0
5	178.0	178.0	178.0	178.0	178.0
6	178.0	178.0	178.0	178.0	178.0
7	178.0	178.0	178.0	178.0	178.0
8	178.0	178.0	178.0	178.0	178.0
9	178.0	178.0	178.0	178.0	178.0
10	178.0	178.0	178.0	178.0	178.0
11	178.0	178.0	178.0	178.0	178.0
12	178.0	178.0	178.0	178.0	178.0
13	178.0	178.0	178.0	178.0	178.0
14	178.0	178.0	178.0	178.0	178.0
15	178.0	178.0	178.0	178.0	178.0
16	178.0	178.0	178.0	178.0	178.0
17	178.0	178.0	178.0	178.0	178.0
18	178.0	178.0	178.0	178.0	178.0
19	178.0	178.0	178.0	178.0	178.0
20	178.0	178.0	178.0	178.0	178.0
21	178.0	178.0	178.0	178.0	178.0
22	178.0	178.0	178.0	178.0	178.0
23	178.0	178.0	178.0	178.0	178.0
24	178.0	178.0	178.0	178.0	178.0
25	178.0	178.0	178.0	178.0	178.0
26	178.0	178.0	178.0	178.0	178.0

7-13

Islands in Flat River
 Township N7 N. Range N9 W. Mer. Mich.

7-13

21-7



Surveyed by the Michigan Geologic Survey, May 22, 1886 / in 1886. Each section is one inch square 2.50 30

The above map of Township N7 South of Range N9 West of the
 Principal Meridian of Michigan is drawn conformable to the field notes
 of the Survey made on file in this office which have been examined and approved.
 Surveyor General Office. Ed. C. Rogers
 Oct. 11, 1886