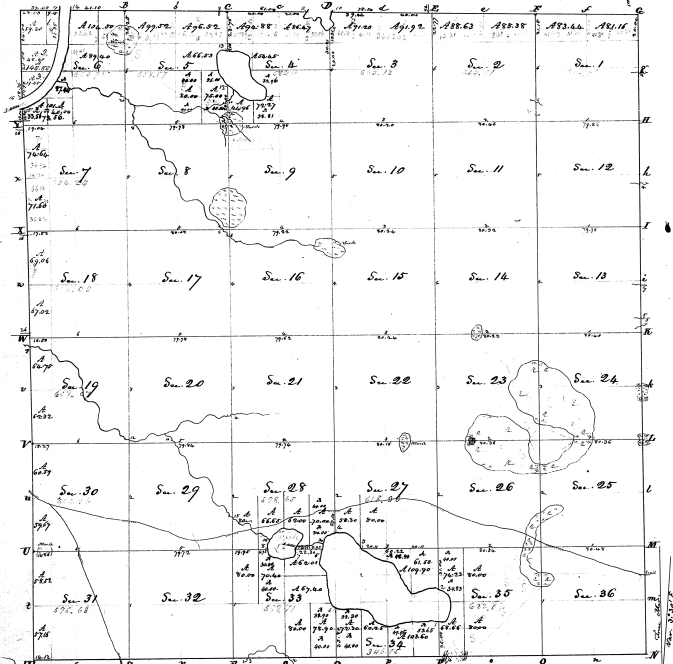


Township N. 11 North, Range N. 11 West Mer. (Mis. Tor.)



Surveyed in February 1831, by John Mallett, S.S.

The above Map of Township N. 11 North, Range N. 11 West Mer. (Mis. Tor.) is fully conformable to the field notes of the Survey thereof on file in this Office, which have been examined & approved  
 Surveyor General's Office  
 M. T. Wiggins  
 Vancouver, Dec. 16, 1831

Section	Acres	Section	Acres
N. 1 <sup>st</sup>	36	N. 20	640
S. 1	36	N. 21	640
N. 2	36	N. 22	640
S. 2	36	N. 23	640
N. 3	36	N. 24	640
S. 3	36	N. 25	640
N. 4	36	N. 26	640
S. 4	36	N. 27	640
N. 5	36	N. 28	640
S. 5	36	N. 29	640
N. 6	36	N. 30	640
S. 6	36	N. 31	640
N. 7	36	N. 32	640
S. 7	36	N. 33	640
N. 8	36	N. 34	640
S. 8	36	N. 35	640
N. 9	36	N. 36	640
S. 9	36		
N. 10	36		
S. 10	36		
N. 11	36		
S. 11	36		
N. 12	36		
S. 12	36		
N. 13	36		
S. 13	36		
N. 14	36		
S. 14	36		
N. 15	36		
S. 15	36		
N. 16	36		
S. 16	36		
N. 17	36		
S. 17	36		
N. 18	36		
S. 18	36		
N. 19	36		
S. 19	36		
N. 20	36		
S. 20	36		
N. 21	36		
S. 21	36		
N. 22	36		
S. 22	36		
N. 23	36		
S. 23	36		
N. 24	36		
S. 24	36		
N. 25	36		
S. 25	36		
N. 26	36		
S. 26	36		
N. 27	36		
S. 27	36		
N. 28	36		
S. 28	36		
N. 29	36		
S. 29	36		
N. 30	36		
S. 30	36		
N. 31	36		
S. 31	36		
N. 32	36		
S. 32	36		
N. 33	36		
S. 33	36		
N. 34	36		
S. 34	36		
N. 35	36		
S. 35	36		
N. 36	36		
S. 36	36		

Number of Acres	Value
1	1.00
2	2.00
3	3.00
4	4.00
5	5.00
6	6.00
7	7.00
8	8.00
9	9.00
10	10.00
11	11.00
12	12.00
13	13.00
14	14.00
15	15.00
16	16.00
17	17.00
18	18.00
19	19.00
20	20.00
21	21.00
22	22.00
23	23.00
24	24.00
25	25.00
26	26.00
27	27.00
28	28.00
29	29.00
30	30.00
31	31.00
32	32.00
33	33.00
34	34.00
35	35.00
36	36.00

The N. 11 Range of sections 6, surveyed by J. Mallett in 1831.

251-6

TOWNSHIP 7 NORTH, RANGE 11 WEST, MICHIGAN MERIDIAN, MICHIGAN  
SURVEY OF ISLAND IN SECTION 5

## Field Notes of Survey

Surveys as represented hereon were executed with a Greley solar transit, constructed in accordance with Bureau specifications, which transit was in good condition and was placed in satisfactory adjustment and tested prior to undertaking this work. Direction of all lines refer to the true meridian and were determined by the solar transit method or by prolongation of celestial observations. Distances are expressed in chains, reduced to horizontal equivalents.

The point for the cor. of secs. 4, 5, 32 and 33, T. 7 and R. W., E. 11 W., is in the center of 4 Mile Road (Kent County), bearing S. and along the township line, and at the projection of lot lines of the subdivisional survey of secs. 4 and 5, as shown upon plats in the office of the County Surveyor. This point controls the subdivision of adjoining lands and is accepted as the best available evidence of the original surveys. The point was not monumented.

Thence

S. 1° 14' W., bet. secs. 4 and 5, in accordance with county surveys.

0.50 A subdivision lot corner on S. side of 4 Mile Road, on my line.

27.954 An iron stake set flush with pavement in Lambertson Lake Drive, on my line, marking the line bet. secs. 4 and 5 according to the records of Kent County.

29.26 Record distance for the meander cor. of secs. 4 and 5 falls in house yard. This land has been filled extensively and is now 7.7 ft. above the present level of Lambertson Lake. Prior to filling the point for the MC would have been near the original edge of the spongy, narrowd rim of land surrounding the lake.

Continue with same line and measurement.

29.42 North side of house, on line.

29.56 South side of house.

30.40 The present E. shore of Lambertson Lake and point for the meander cor. of secs. 4 and 5.

Set a regulation iron post, 2½ ins. diam., flush with the lam., with brass cap mkd.

7 7/8 x 1 1/2 W  
3 3/8 x 4

from which

25.9

A power pole, bears N. 37° E., 42 3/4 chs. dist., no. 88d.

A pine, 5 in. diam., bears N. 75° W., 28 lks. dist., a yard tree, not skd.

An iron pipe on lot line, bears S. 83° 54' W., 0.496 ch. dist. (32.77 ft.). This pipe used to determine the position in latitude for the MC as given by the County Survey records.

From the meander cor. of secs. 4 and 5, on N. shore of Lambertson Lake.

S. 15° 41' W., 6.26 chs., on a connecting line over Lambertson Lake by triangulation, to the point for the auxiliary meander cor. on the island.

Set a regulation iron post, 2½ ins. diam., with brass cap mkd.

A M C  
1 7/8 x 1 1/2 W  
5 5

from which

19.58

An elm, 3 in. diam., bears S. 22½° W., 82 lks. dist., skd. 5 5 MC BT.

Thence with the meanders of the island, along a well-defined shore, approx. 1 ft. above lake.

S. 20° 15' E., 0.45 ch.

S. 55° 15' E., 0.63 ch.

N. 81° 30' W., 1.10 ch.

N. 48° 00' E., 0.45 ch.

N. 19° 30' W., 0.45 ch.

N. 67° 30' E., 1.70 ch.

S. 51° 30' E., 0.47 ch.

To the auxiliary meander cor.

## General Description

The island is of sandy, gravelly and narrowd loess formation, reaching 1.6 ft. above the level of Lambertson Lake. There is no timber on the island, but there is a growth of brush and one elm tree on it. There are no improvements on the island.

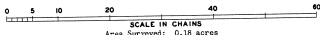
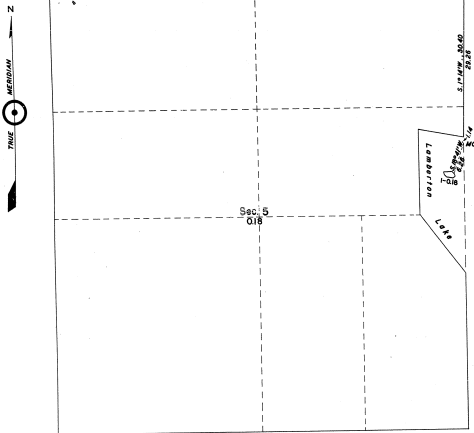
The formation of the island, near the 1 ft. level, is similar to that of the rim of low land bet. the position for the original meander cor. and the present lake shore; the slightly higher land is similar to that of the mainland included in the original surveyed area that lies bet. meander cor. position and the higher upland area.

It was a former practice to scrape the snow off the lake and dump it on the island during ice harvest. It seemed to me this would tend to retard any growth on the island.

I carefully determine the elevation of the island above the level of Lambertson Lake and found it to be 1 to 1.6 ft. Thus, the entire island is as high or higher than the point for the original meander cor. on the shore of Lake.

I conclude, after considering all developed information, that the island was in existence in 1811, the date of the original survey, and in 1837, when Michigan gained statehood, and at all subsequent dates, and therefore has the status of public land.

I believe the island would produce tame grass and I classify it as upland in character, although it is a spongy narrowd formation.



UNITED STATES DEPARTMENT OF THE INTERIOR  
BUREAU OF LAND MANAGEMENT  
Washington, D. C. June 6, 1960

This plat is strictly conformable to the above field notes of survey, which have been critically examined and found correct, and are hereby approved, and the survey, having been properly executed in accordance with the requirements of law and the regulations of this Bureau, is hereby accepted.

For the Director

Donald C. Stewart  
Cadastral Engineering Staff Officer

I HEREBY CERTIFY UPON HONOR that, in pursuance of Special Instructions for Survey 67, Michigan, bearing date of August 5, 1959, and Assignment Instructions dated August 5, 1959, I surveyed on Sept. 26 - 29, 1959, the island in Lambertson Lake, Sec. 5, T. 7 N., R. 11 W., Michigan Meridian, Michigan, which is represented by this diagram and field notes of survey, and that said survey has been made in strict conformity with said instructions, the Manual of Instructions for Survey of Public Lands of the United States, and in the specific manner described in the notes of survey.

February 9, 1960

Hugh B. Crawford  
Cadastral Surveyor