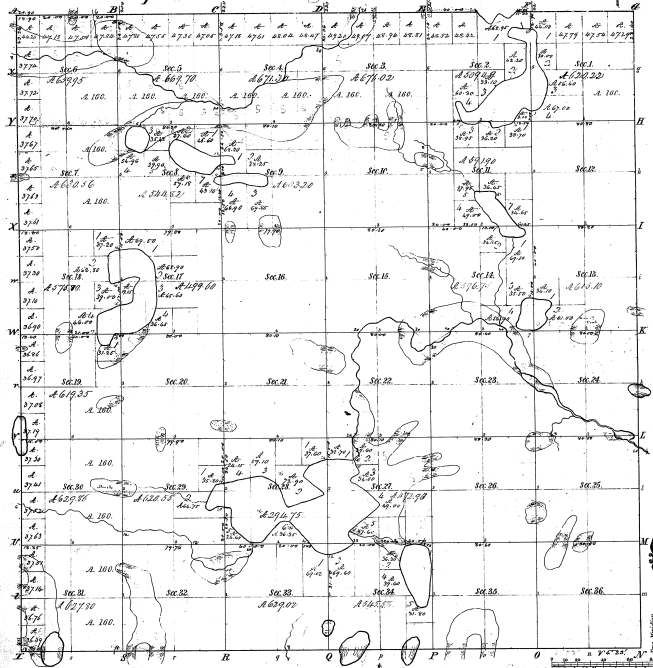


Township 13° N., Range 13° West Mer. (Mich.) 1905



Measurements of Lines					
Point	Course	Dist.	Point	Course	Dist.
1	S 77° 59' E	100.00	2	S 77° 59' E	100.00
2	S 77° 59' E	100.00	3	S 77° 59' E	100.00
3	S 77° 59' E	100.00	4	S 77° 59' E	100.00
4	S 77° 59' E	100.00	5	S 77° 59' E	100.00
5	S 77° 59' E	100.00	6	S 77° 59' E	100.00
6	S 77° 59' E	100.00	7	S 77° 59' E	100.00
7	S 77° 59' E	100.00	8	S 77° 59' E	100.00
8	S 77° 59' E	100.00	9	S 77° 59' E	100.00
9	S 77° 59' E	100.00	10	S 77° 59' E	100.00
10	S 77° 59' E	100.00	11	S 77° 59' E	100.00
11	S 77° 59' E	100.00	12	S 77° 59' E	100.00
12	S 77° 59' E	100.00	13	S 77° 59' E	100.00
13	S 77° 59' E	100.00	14	S 77° 59' E	100.00
14	S 77° 59' E	100.00	15	S 77° 59' E	100.00
15	S 77° 59' E	100.00	16	S 77° 59' E	100.00
16	S 77° 59' E	100.00	17	S 77° 59' E	100.00
17	S 77° 59' E	100.00	18	S 77° 59' E	100.00
18	S 77° 59' E	100.00	19	S 77° 59' E	100.00
19	S 77° 59' E	100.00	20	S 77° 59' E	100.00
20	S 77° 59' E	100.00	21	S 77° 59' E	100.00
21	S 77° 59' E	100.00	22	S 77° 59' E	100.00
22	S 77° 59' E	100.00	23	S 77° 59' E	100.00
23	S 77° 59' E	100.00	24	S 77° 59' E	100.00
24	S 77° 59' E	100.00	25	S 77° 59' E	100.00
25	S 77° 59' E	100.00	26	S 77° 59' E	100.00
26	S 77° 59' E	100.00	27	S 77° 59' E	100.00
27	S 77° 59' E	100.00	28	S 77° 59' E	100.00
28	S 77° 59' E	100.00	29	S 77° 59' E	100.00
29	S 77° 59' E	100.00	30	S 77° 59' E	100.00
30	S 77° 59' E	100.00	31	S 77° 59' E	100.00
31	S 77° 59' E	100.00	32	S 77° 59' E	100.00
32	S 77° 59' E	100.00	33	S 77° 59' E	100.00
33	S 77° 59' E	100.00	34	S 77° 59' E	100.00
34	S 77° 59' E	100.00	35	S 77° 59' E	100.00
35	S 77° 59' E	100.00	36	S 77° 59' E	100.00

Total number of Acres 21664.22

Survey Established	By Whom Surveyed	Date of Contract	Amount of Survey	When Surveyed	Plat No. and where the Survey was made
Township - lines	A. G. Phillips	Oct. 21, 1826	36 Secs.	1827	1828
Subdivisions	A. G. Phillips	March, 1829	79.44 Ac.	1829	1829

The above map of Township 13 N. Range 13 W. Mer. of this Principal Meridian is a study conformable to the full notes of the survey thereon on file in this office and has been examined and approved.

Surveyor General's Office
Grand Rapids, Feb. 24 - 1839

A. G. Phillips

7-5