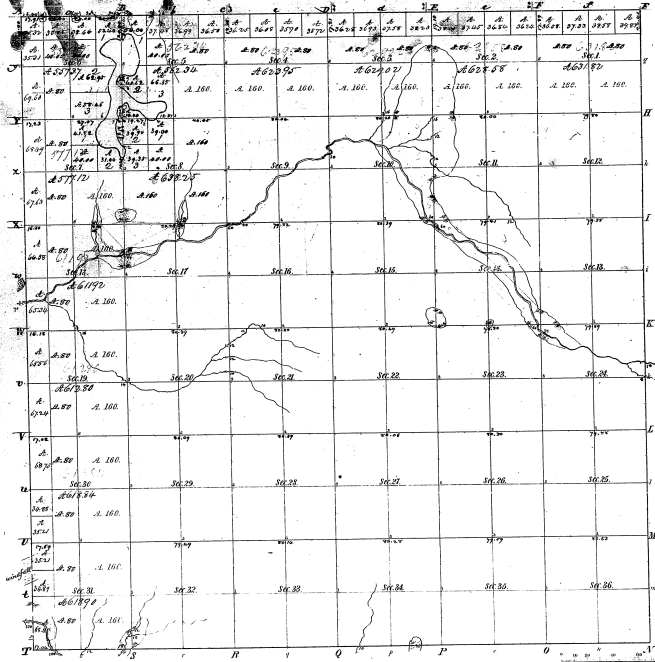


Township N<sup>o</sup> 17 North, Range N<sup>o</sup> 12 West Mer. Mic.



Section	Acres	Notes
1	36.00	
2	36.00	
3	36.00	
4	36.00	
5	36.00	
6	36.00	
7	36.00	
8	36.00	
9	36.00	
10	36.00	
11	36.00	
12	36.00	
13	36.00	
14	36.00	
15	36.00	
16	36.00	
17	36.00	
18	36.00	
19	36.00	
20	36.00	
21	36.00	
22	36.00	
23	36.00	
24	36.00	
25	36.00	
26	36.00	
27	36.00	
28	36.00	
29	36.00	
30	36.00	
31	36.00	
32	36.00	
33	36.00	
34	36.00	
35	36.00	
36	36.00	

11-16

11-16

Total number of Acres 22676.91

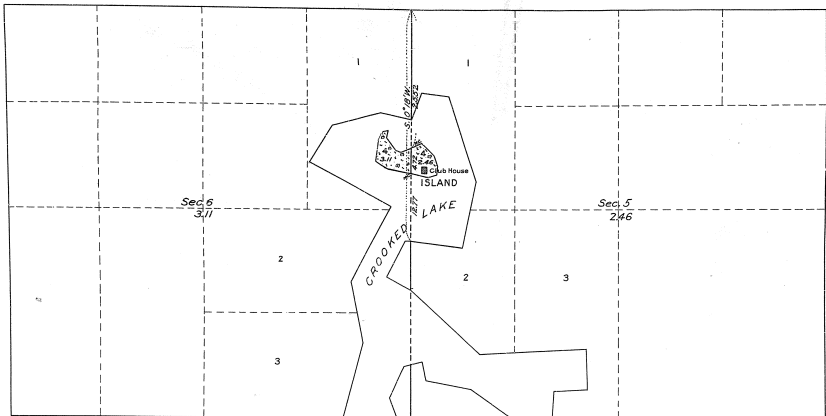
Survey designated	By whom surveyed	Date of Contract	Amount of Acres	When Surveyed	How long and by whom
Township lines	John Hodgson	Jan. 1837	23,755.35	1837	5. yr. 1838
Subdivisions	Same	Jan. 30, 1838	63,731.50	1838	1. yr. 1839

The above map of Township 17 N. of Range 12 W. of the 6th Meridian, Michigan, is hereby approved by the State Surveyor on file in this office, subject to the usual laws, terms and conditions of the survey. Township 17 N. of Range 12 W. of the 6th Meridian, Michigan, Dec. 8, 1839

W. J. Leavelle Surveyor

PLAT OF AN ISLAND  
 in  
 CROOKED LAKE,  
 in  
 Secs. 5 and 6, T. 17 N., R. 12 W., Michigan Meridian,  
 MICHIGAN.

16-11  
 11-16



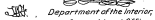
LEGEND

Scale: 10 Chains to an inch.

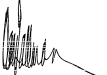
Surveyed by Albinus H. Kimmel, U.S. Surveyor, from June 28 to July 5, 1916, incl., under special instructions dated June 8, 1916, issued by Arthur D. Kidder, Supervisor of Surveys, bearing the approval of the Commissioner of the General Land Office under date of June 20, 1916.

Area of lands surveyed = 5.57 acres, not shown upon the plat approved June 10, 1939.  
 Area of previously surveyed lands not shown.

G. A. J.

  
 Department of the Interior,  
 General Land Office,  
 Washington, D. C. February 1, 1918.

The above plat of an Island in Crooked Lake, in Sections 5 and 6, T. 17 N., R. 12 W., Michigan Meridian, Michigan, is strictly conformable to the field notes of the survey thereof, on file in this office, which have been examined and approved.

  
 Commissioner of the  
 U.S. Survey General for Michigan