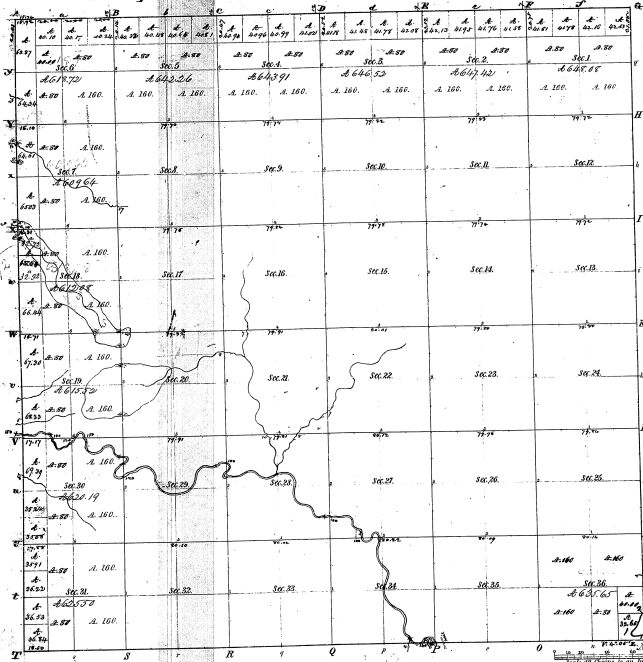


Township No. 18 N. Range No. 14 West Mer. Mich.



Meanders of road of a Lake in Section 36

Point	Course	ACR	PRD	Course	ACR	PRD	Course	ACR
1	S 88° 57'	0.00						
2	S 88° 57'	0.00						
3	S 88° 57'	0.00						
4	S 88° 57'	0.00						
5	S 88° 57'	0.00						
6	S 88° 57'	0.00						
7	S 88° 57'	0.00						
8	S 88° 57'	0.00						
9	S 88° 57'	0.00						
10	S 88° 57'	0.00						
11	S 88° 57'	0.00						
12	S 88° 57'	0.00						
13	S 88° 57'	0.00						
14	S 88° 57'	0.00						
15	S 88° 57'	0.00						
16	S 88° 57'	0.00						
17	S 88° 57'	0.00						
18	S 88° 57'	0.00						
19	S 88° 57'	0.00						
20	S 88° 57'	0.00						
21	S 88° 57'	0.00						
22	S 88° 57'	0.00						
23	S 88° 57'	0.00						
24	S 88° 57'	0.00						
25	S 88° 57'	0.00						
26	S 88° 57'	0.00						
27	S 88° 57'	0.00						
28	S 88° 57'	0.00						
29	S 88° 57'	0.00						
30	S 88° 57'	0.00						
31	S 88° 57'	0.00						
32	S 88° 57'	0.00						
33	S 88° 57'	0.00						
34	S 88° 57'	0.00						
35	S 88° 57'	0.00						
36	S 88° 57'	0.00						

Survey Designated	By Whom Surveyed	Date of Cont. Bk.	Amount of Survey	When Surveyed
Township 18 N.	H. C. ...	1877	60.00	1878
Subdivisions	Spec. Sides	18.00, 18.00	60.00	1879

The above copy of Township No. 18 N. of Range No. 14 West of 4th P.M. Principal Meridian of Michigan, is truly conformable to the field notes of the survey thereon, and the same officers which have been examined and approved.

Surveyor General's Office
 Grand Rapids, Mich. 28th 1879

R. P. ...