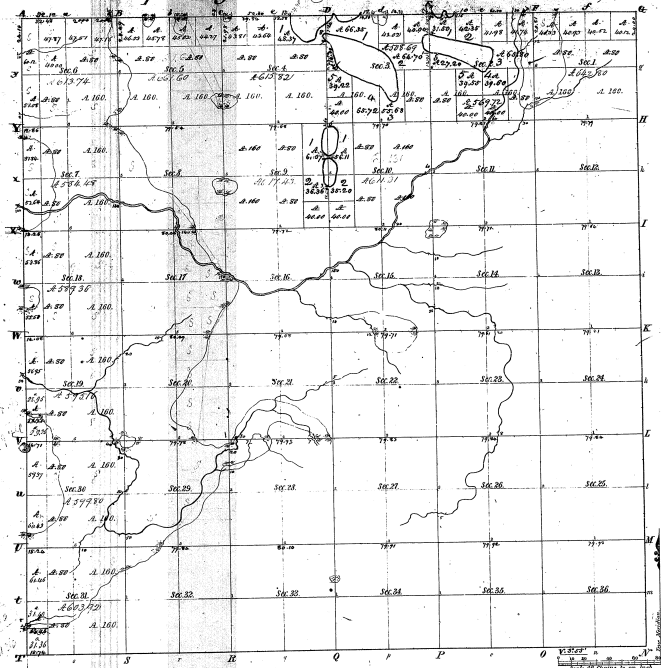


Township N. 19 R. West Mer. (Mich.)



Mounds of Section			
Post	Corner	Value	Post
Section 1			
1	1799	12.00	
2	1720	12.00	
3	1720	12.00	
4	1779	12.00	
5	1780	12.00	
6	1780	12.00	
7	1780	12.00	
8	1780	12.00	
9	1780	12.00	
10	1780	12.00	
11	1780	12.00	
12	1780	12.00	
Section 2			
1	1780	12.00	
2	1780	12.00	
3	1780	12.00	
4	1780	12.00	
5	1780	12.00	
6	1780	12.00	
7	1780	12.00	
8	1780	12.00	
9	1780	12.00	
10	1780	12.00	
11	1780	12.00	
12	1780	12.00	
Section 3			
1	1780	12.00	
2	1780	12.00	
3	1780	12.00	
4	1780	12.00	
5	1780	12.00	
6	1780	12.00	
7	1780	12.00	
8	1780	12.00	
9	1780	12.00	
10	1780	12.00	
11	1780	12.00	
12	1780	12.00	
Section 4			
1	1780	12.00	
2	1780	12.00	
3	1780	12.00	
4	1780	12.00	
5	1780	12.00	
6	1780	12.00	
7	1780	12.00	
8	1780	12.00	
9	1780	12.00	
10	1780	12.00	
11	1780	12.00	
12	1780	12.00	

10-6
10-6

Total number of Acres: 22 539 83

Survey designated	By Whom Surveyed	Date of Contract	Amount of Survey	When Surveyed
Township lines	W. H. S. & Co.	1837	25	1838
Subdivisions	S. J. S. & Co.	1837	66.35	1839

The above map of Township N. 19 R. West Mer. of Range 19 W. West
 of Principal Meridian, Michigan, is a duly certified to the field notes
 of the Survey thereon on file in this office, which have been examined and approved.
 Surveyor General's Office
 East Lansing, Mich. 1839
 P. P. Peckham, Surveyor General