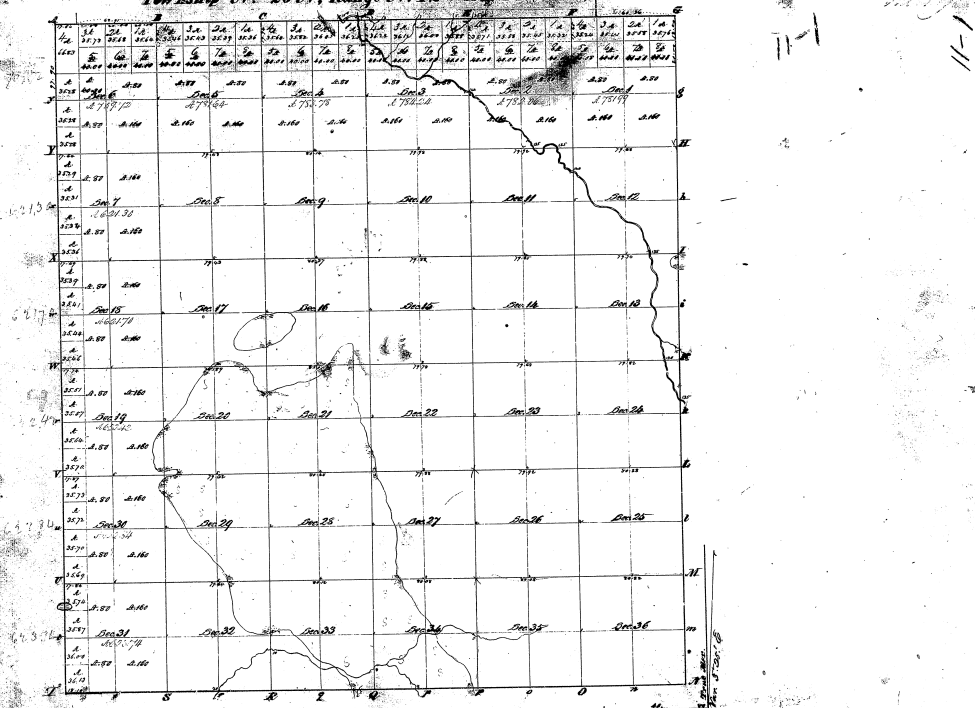


Township No. 20 N., Range No. 12 West Mer. (Mich.)



Surveyor's Name		Date of Survey		Date of Sale		Price per Acre		Total Price	
W. Broadway	John Frank	Dec 6, 1836	5.77	46	3.7	127	17.7	1159	1000
W. Broadway	John Frank	Dec 6, 1836	18.35	11	5.7	127	17.7	1159	1000
W. Broadway	John Frank	Dec 6, 1836	11.71	36	5.7	127	17.7	1159	1000

The above Map of Township No. 20 N., Range No. 12 W., after Principal Section has been made & finally completed, all the full title of the same being on file in this Office, which have been claimed and approved by Surveyor General's Office  
 December, 26, 1839  
 J. P. Cleary