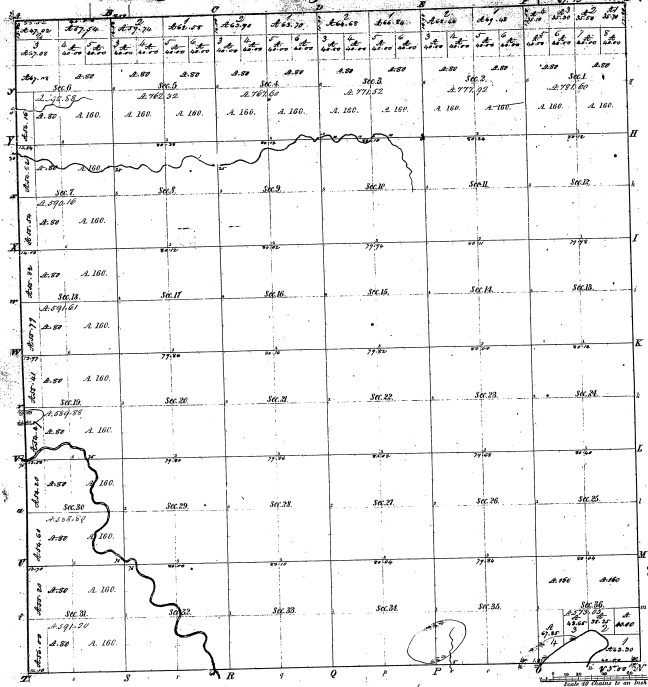


Township N. 20 N., Range N. 13 W., Mer. 6 (Mich)

10-4



Statement of part of a Sale in 1854-55

part course	dist	part course	dist	part course	dist
1	175.00	175.00	175.00	175.00	175.00
2	175.00	175.00	175.00	175.00	175.00
3	175.00	175.00	175.00	175.00	175.00
4	175.00	175.00	175.00	175.00	175.00
5	175.00	175.00	175.00	175.00	175.00
6	175.00	175.00	175.00	175.00	175.00
7	175.00	175.00	175.00	175.00	175.00
8	175.00	175.00	175.00	175.00	175.00
9	175.00	175.00	175.00	175.00	175.00
10	175.00	175.00	175.00	175.00	175.00
11	175.00	175.00	175.00	175.00	175.00
12	175.00	175.00	175.00	175.00	175.00
13	175.00	175.00	175.00	175.00	175.00
14	175.00	175.00	175.00	175.00	175.00
15	175.00	175.00	175.00	175.00	175.00
16	175.00	175.00	175.00	175.00	175.00
17	175.00	175.00	175.00	175.00	175.00
18	175.00	175.00	175.00	175.00	175.00
19	175.00	175.00	175.00	175.00	175.00
20	175.00	175.00	175.00	175.00	175.00
21	175.00	175.00	175.00	175.00	175.00
22	175.00	175.00	175.00	175.00	175.00
23	175.00	175.00	175.00	175.00	175.00
24	175.00	175.00	175.00	175.00	175.00
25	175.00	175.00	175.00	175.00	175.00
26	175.00	175.00	175.00	175.00	175.00
27	175.00	175.00	175.00	175.00	175.00
28	175.00	175.00	175.00	175.00	175.00
29	175.00	175.00	175.00	175.00	175.00
30	175.00	175.00	175.00	175.00	175.00
31	175.00	175.00	175.00	175.00	175.00
32	175.00	175.00	175.00	175.00	175.00
33	175.00	175.00	175.00	175.00	175.00
34	175.00	175.00	175.00	175.00	175.00
35	175.00	175.00	175.00	175.00	175.00
36	175.00	175.00	175.00	175.00	175.00

10-4

Total number of Acres 23,438.54

Survey designated	By whom surveyed	Date of Contract	Amount of Survey	When Surveyed	By whom and in what County
N. Township lines subdivisions	John M. Mather	Jan 11 1857	2,500.00	6/6 1857	3 1/2 1857
E. & W. Township lines	John M. Mather	July 11 1857	61.52 - 97	5-25 1857	1857
	A. B.

The above copy of Township N. 20 North of Range N. 13 West of the Principal Meridian Michigan is hereby confirmed to the field notes of the survey thereon for the following and hereon examined and approved
 Surveyor General Office
 Grand Rapids Mich. July 15th 1857
 J. P. ...