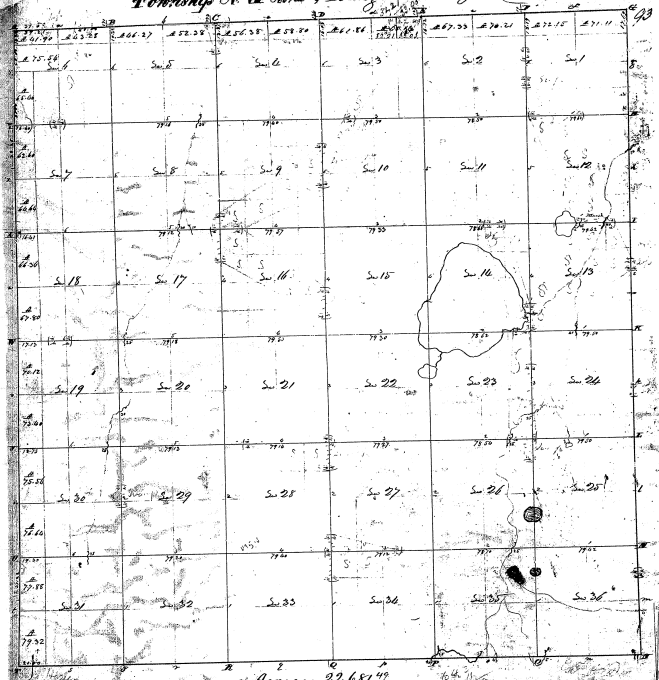


Township N^o 7E Range N^o 24 East of the (2nd Mer)



Area 22,681.49

Original to abstract with an intention from Board of Land Commissioners of the United States, bearing date the 1st of June 1854. I have examined the original and find the same to be correct and reliable, and do hereby certify that it is a true and correct copy of the original as the same is now on file in the office of the Surveyor General of the Territory of Kansas, and that the same is a true and correct copy of the original as the same is now on file in the office of the Surveyor General of the Territory of Kansas, and that the same is a true and correct copy of the original as the same is now on file in the office of the Surveyor General of the Territory of Kansas.

Subscribed and sworn to before me this 27th day of April 1854.

27-16

27-16