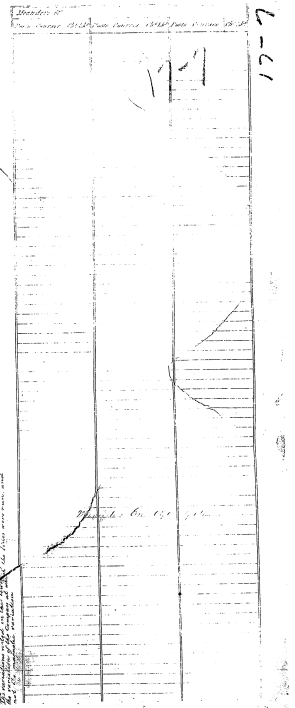
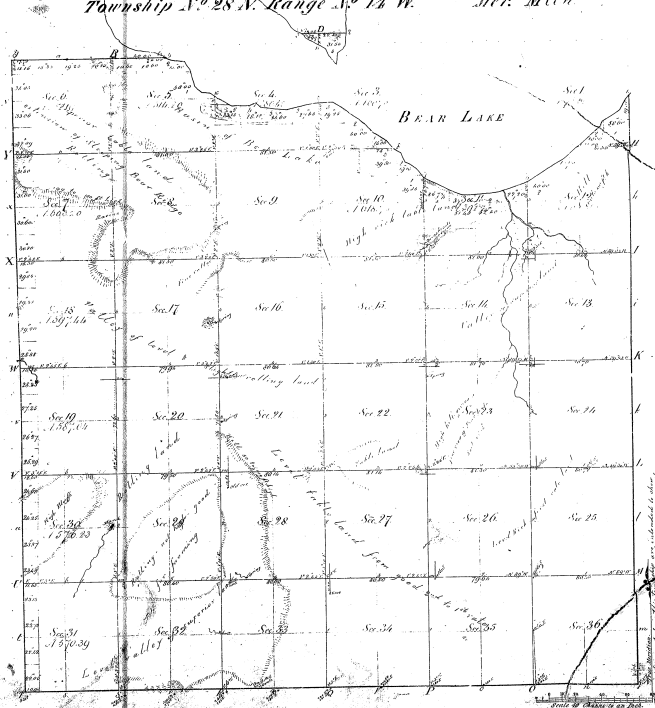


Re Survey  
 Township N<sup>o</sup> 28 N. Range N<sup>o</sup> 14 W. Mer. Mich.



Total number of acres 264,177.66

Survey	By Whom	Approved	Date of Closing	Acres in Survey	When Closed	When Surveyed
1857	J. J. ...	...	...	...	...	...
1858	...	...	...	...	...	...
1859	...	...	...	...	...	...
1860	...	...	...	...	...	...
1861	...	...	...	...	...	...
1862	...	...	...	...	...	...
1863	...	...	...	...	...	...
1864	...	...	...	...	...	...
1865	...	...	...	...	...	...
1866	...	...	...	...	...	...
1867	...	...	...	...	...	...
1868	...	...	...	...	...	...
1869	...	...	...	...	...	...
1870	...	...	...	...	...	...
1871	...	...	...	...	...	...
1872	...	...	...	...	...	...
1873	...	...	...	...	...	...
1874	...	...	...	...	...	...
1875	...	...	...	...	...	...
1876	...	...	...	...	...	...
1877	...	...	...	...	...	...
1878	...	...	...	...	...	...
1879	...	...	...	...	...	...
1880	...	...	...	...	...	...

All claims for land in this Township and Range of Range 14 W. Mer. Mich. of the  
 original allotment and for any other purpose, are hereby notified to file claims  
 with the Surveyor General of Michigan, at Lansing, Michigan, on or before the 1st day of  
 January, 1881, and to be approved by the Surveyor General of Michigan, at Lansing,  
 Michigan, on or before the 1st day of January, 1881.

Surveyor General of Michigan,  
 Lansing, Mich.

Charles W. ...