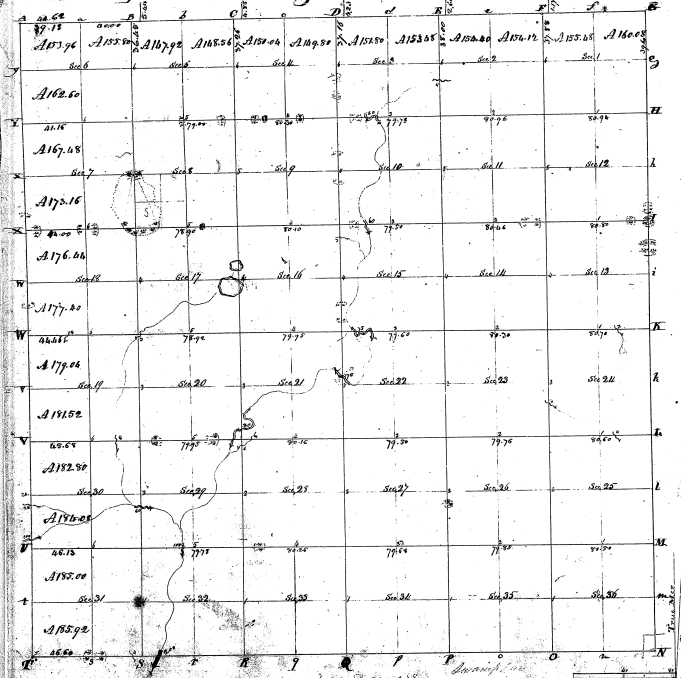


Township N. VI south, Range N. IV East of Mer. (Mich. Ter.)



30-24

30-24

Corr. to a plat with our returns from Cassin's office, June 23, 1855. I have examined land set out according to the above survey, and find that it has both width and length, but without any original as an original within flat and ditches in the place, made through and returned with the plat to the surveyor's office.

Witness this 25<sup>th</sup> day of Sept. 1855

J. L. ...