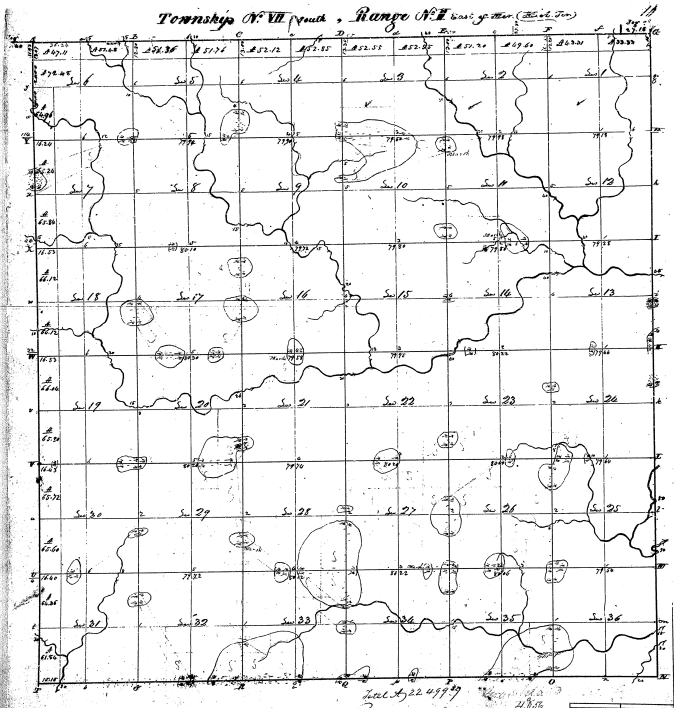


Township N. VII. Range N.E. East of Mer. (Brid. Ter.)



30-29

30-29

Pursuant to a contract, with and instruction from Edwardiffin Survey General of the United States, bearing into the city
 above mentioned led out and laid the above described, and so certify that all the marks and
 bounds late returned and confirmed as an separate on said piece and situated in the place herein above described
 conform with the fact into the Survey General's Office - bearing this 17th day of July 1879

John Muller