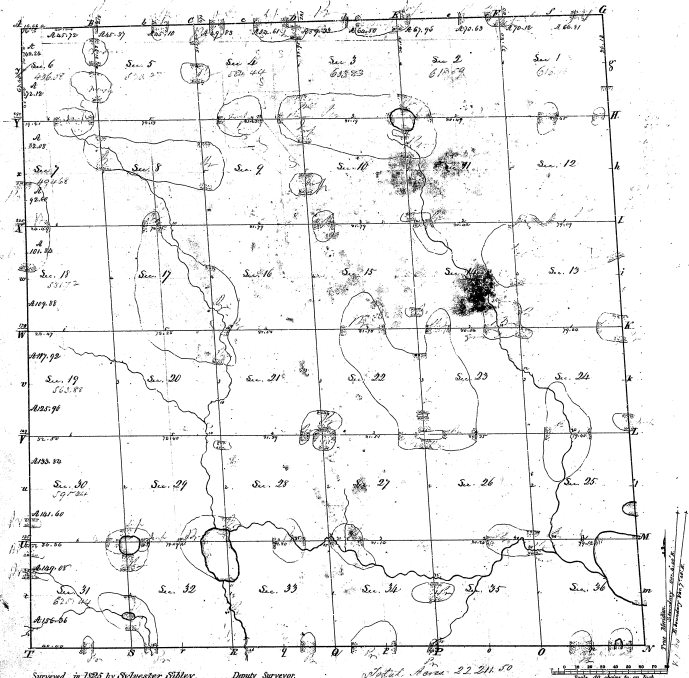


Township N<sup>o</sup> 1 N. Range N<sup>o</sup> 3 East Mer. (Mich.) 21



Surveyed in 1825 by Sylvester Silbey, Deputy Surveyor.

Original No. 22, 241, 50

I certify that the above is a true copy of the plat in this office.

Surveyor-General's Office,  
Cincinnati.

29-38

29-38