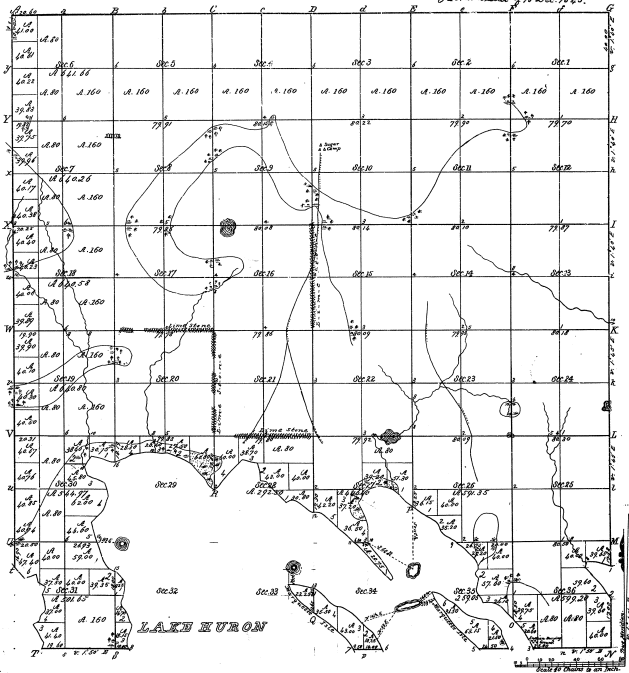


Township N^o 42 N. Range N^o 1 W.

Mer. Mich.
Plat. Cont. Sec. of 11 Dec. 1845.

33-3
33-39

All the vacant lands in this Township, beginning with the
 first survey made in this range, were surveyed by
 G. W. R. of Grand 10 1845.



LAKE EURON

Total number of Acres 19,553.27

Survey designated	By whom Surveyed	Date of Contract	Amount of Survey	When Surveyed	When the Survey was made
Township lines	Wm. A. Wood	January 15 1845	N ^o 23 23 1/2	25 th of 1845	
Subdivisions	J. W. Muller	April 2 1845	66 30.68	5 th of 1845	

This plan Map of Township N 42 N. Range N 1 W. Mer. Mich. is
 the original of the same. It is hereby certified to be the field notes
 of the survey thereof on file in this Office which has been examined and approved
 Surveyor General's Office
 Detroit, Dec. 11, 1865

Laurel J. G. G. G.

January 11, 1905

M. A. Richards

Duplicate

33-399

DIAGRAM
OF
THREE SMALL ISLANDS

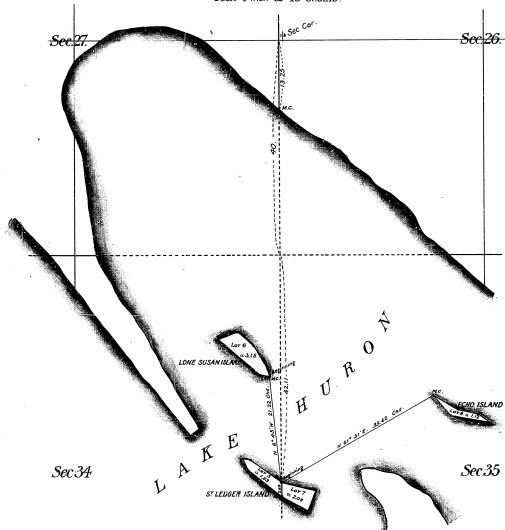
IN
SECS 34 and 35 T 42 N. R. 1 W.

IN THE STATE OF

MICHIGAN.

April 1890.

Scale 1 Inch to 30 Chains.



J. B. Brown
Surveyor

Department of the Interior,
General Land Office.

April 5, 1890.

The above diagram of Three Small Islands in Secs. 34 and 35 T 42 N. R. 1 W. in the State of Michigan, is a correct plat of Survey executed by Mason L. Brown, U.S. Deputy Surveyor, in pursuance of instructions from the Commissioner of the General Land Office bearing date the 7th day of January 1890, and is strictly conformable to the Field notes thereof, which have been examined and approved.

J. B. Brown
Commissioner & by Official Surveyor General
of Michigan

MAP OF HAVEN ISLAND

Sec. 33, Tp. No. 42 N., Range No. 1 W., Mich. Mer.

MICHIGAN.

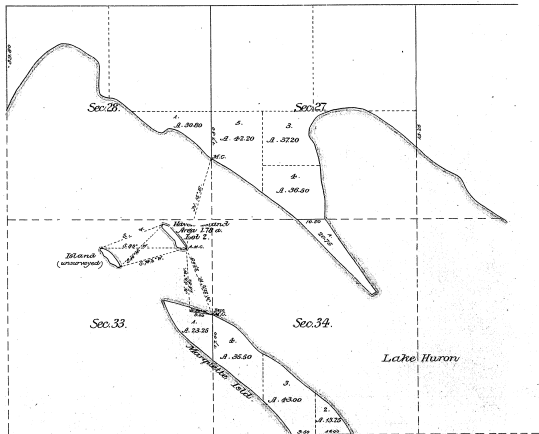
Surveyed by B. E. Cuddey U.S. Dep. Surveyor.

Scale: 20 chains to an inch.

33-39

33-39

RECEIVED AT
AUG 7 1895
STATE LAND OFFICE



ANS
0.0

DEPARTMENT OF THE INTERIOR,

General Land Office.

Washington D.C. July 11, 1895.

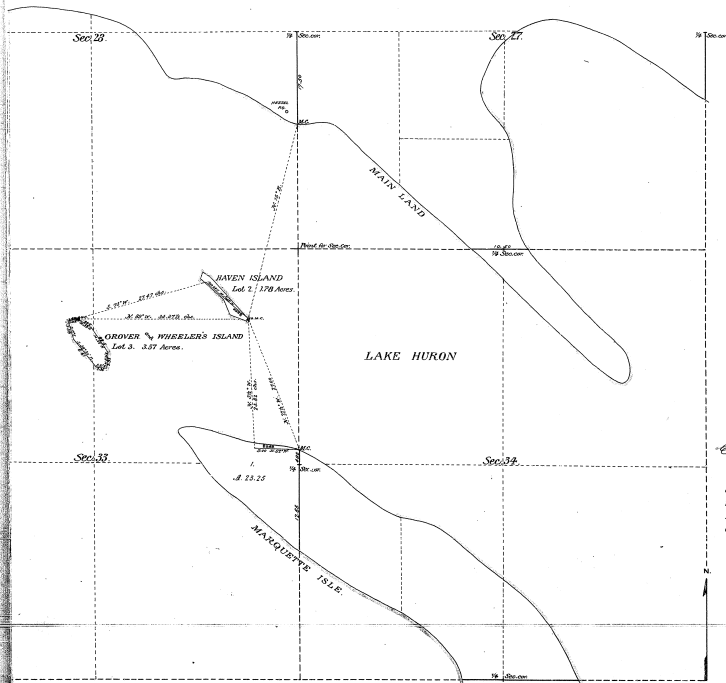
The above map of Haven Island, in Lake Huron, in Sec. 33, Tp. 42 N., R. 1 W., Mich. Mer. is a correct plat of a survey executed by Byron E. Cuddey, U.S. Deputy Surveyor, in pursuance of instructions from the Commissioner of the General Land Office, bearing date the 3rd day of August 1895, and is strictly conformable to the field notes thereof which have been examined and approved.

S. M. Anderson
Commissioner and ex-officio
Surveyor General for Michigan.

P.K.

33-34
33-39

Supplemental Plat
 of *Grover & Wheeler's Island*, in *Lake Huron*,
 in *Sec. 33, Tp. 42 N., R. 1W., Mich. Mer.*,
 MICHIGAN.
 Surveyed by *B.E. Cusby*, U.S. Deputy-Surveyor,
 under instructions dated *Dec. 2, 1899*.
 Scale *10 chs = 1 inch*.



DEPARTMENT OF THE INTERIOR,
 General Land Office,
 Washington, D.C. June 9th 1900

The above plat of *Grover & Wheeler's Island*, in *Lake Huron*, in *Sec. 33, Tp. 42 N., R. 1W., Mich. Meridian*, Michigan, is a correct plat of a survey executed by *B.E. Cusby*, U.S. Deputy-Surveyor, under special instructions from the Commissioner of the General Land Office, bearing date *Dec. 2, 1899*, and is strictly conformable to the field notes thereof on file in this office, which have been examined and approved.

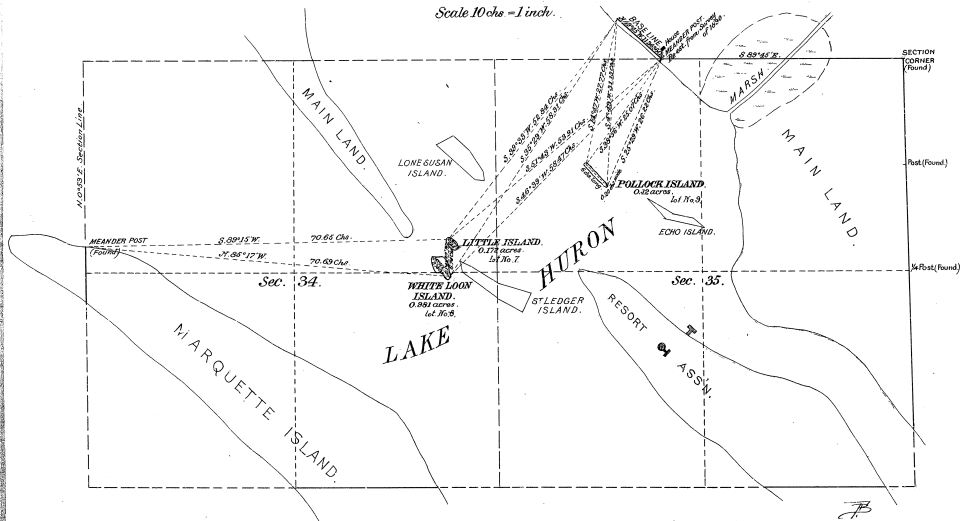
Benjamin H. Swann
 Commissioner of the Office
 Surveyor-General for Michigan

PLAT of the Survey of the THREE ISLANDS
in Secs. Nos 34 & 35 T. 42 N. R. 1 W. Mich. Mer.
in Lake Huron,

MICHIGAN.

Surveyed by Mason L. Brown, U.S. Dep. Surveyor, Oct. 19 to Nov. 4, 1903.
under Special Instruction from the Com. of the Genl. Land Office, dated March 4, 1903.

Scale 10 chs = 1 inch.



DEPARTMENT OF THE INTERIOR.

General Land Office.

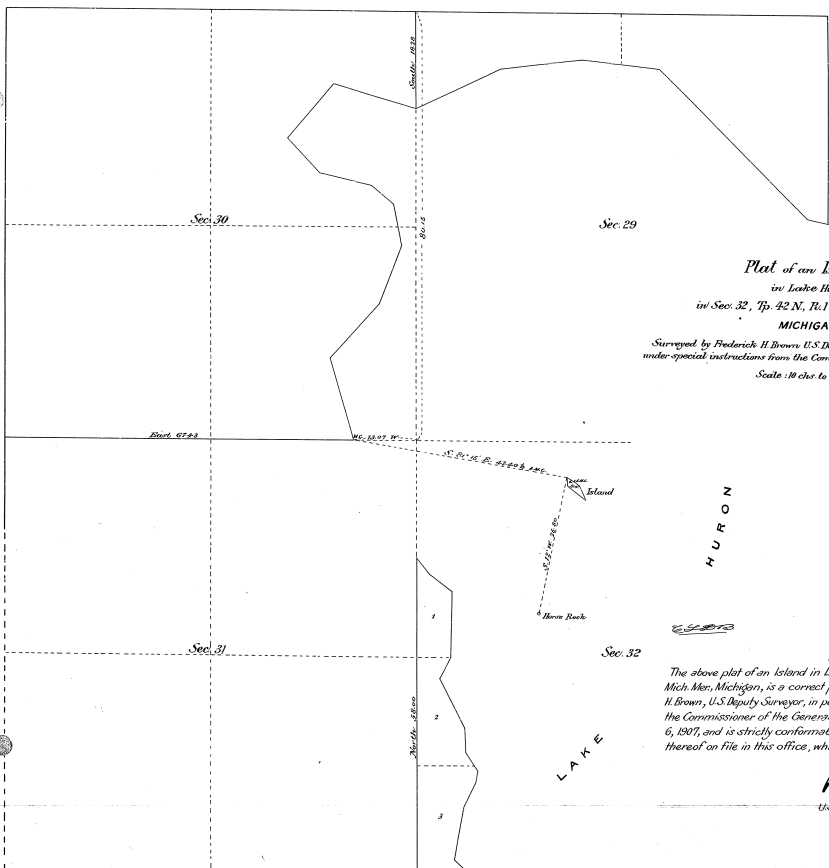
Washington, D.C., March 7, 1906.

The above plat of the survey of the Three Islands in Secs Nos 34 & 35, T. 42 N. R. 1 W. Mich. Mer. in Lake Huron, Michigan, is a correct plat of a survey, executed by Mason L. Brown, U.S. Dep. Surveyor, in pursuance of special instructions from the Commissioner of the General Land Office, bearing date March 4, 1903, and is strictly conformable to the field notes thereof, on file in this office, which have been examined and approved.

M. A. Richard
Commissioner, ex officio
Surveyor General for Michigan.

33-39
33-39
33-39

33-39
33-39



Plot of an Island
in Lake Huron
 in Sec. 32, T_p. 42 N., R₁. 1 W., Mich. Mer.,
 MICHIGAN.

Surveyed by Frederick H. Brown, U.S. Deputy Surveyor, Feb. 25 to 26, 1907,
 under special instructions from the Com' General, bearing date Feb. 6, 1907.
 Scale: 10 chs. to an inch.

HURON

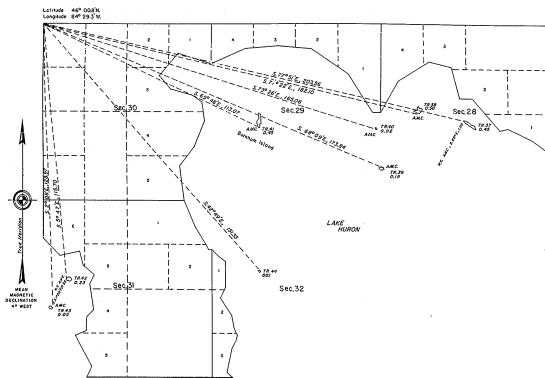
[Signature]

Department of the Interior,
 General Land Office,
 Washington, D.C., April 6th 1907.

The above plot of an Island in Lake Huron, in Sec. 32, T_p. 42 N., R₁ W., Mich. Mer., Michigan, is a correct plot of a survey executed by Frederick H. Brown, U.S. Deputy Surveyor, in pursuance of special instructions from the Commissioner of the General Land Office, bearing date February 6, 1907, and is strictly conformable to the field notes of the survey thereof on file in this office, which have been examined and approved.

[Signature]
 Commissioner of the Office
 U.S. Surveyor General for Michigan.

TOWNSHIP 42 NORTH, RANGE 1 WEST, MICHIGAN MERIDIAN, MICHIGAN.
 SURVEY OF ISLANDS



33-39

A history of surveys is contained in the field notes.

This plat represents the survey of eight islands in Lake Huron, T. 42 N., R. 1 W., Michigan Meridian, Michigan.

Shown as indicated herein, the surveys and areas are as shown on the plat approved December 15, 1965.

Survey conducted by Gary L. Kratz, Central Surveyor, beginning June 21, 1977, and completed July 22, 1977, pursuant to Special Instructions dated June 3, 1977, for Group No. 78, Michigan.

UNITED STATES DEPARTMENT OF THE INTERIOR
 BUREAU OF LAND MANAGEMENT
 Denver, Colorado November 17, 1981

This plat is strictly conformable to the approved field notes, and the survey, having been correctly executed in accordance with the requirements of law and the regulations of this Bureau, is hereby accepted.

For the Director

James L. Gilbert

Acting Chief, Central Survey
 Examination and Approval Staff