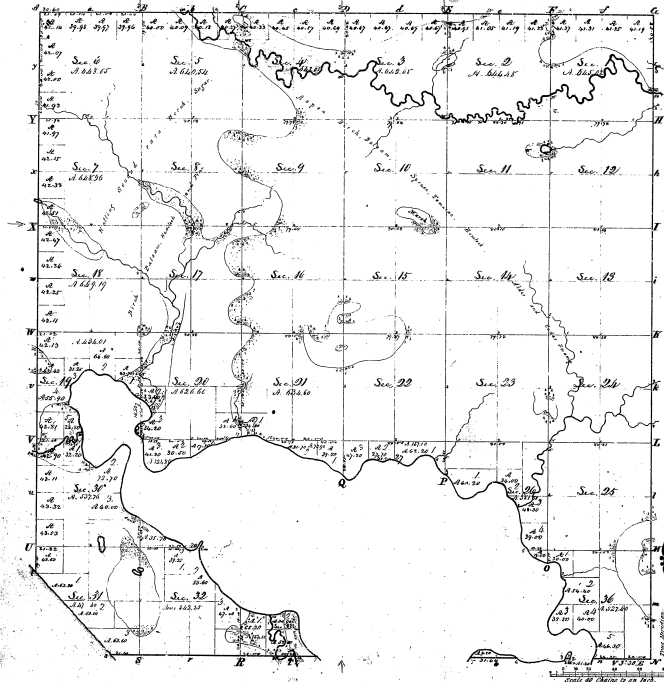


Township N.° 42 N. Range N.° 5 W.

Mer. Mich.



Bounded by					
Face	Course	Area	Face	Course	Area
453					
1					

48-35

Total number of acres 11592.35.

Survey designated	By Whom Surveyed	Date of Commencement	Amount of Survey	When Surveyed	When Closed or by the Surveyor
Parishly lines	Wm. D. Burt	Aug 12 th 1782	2 ^o 5 ^o 1136		
Subdivisions	Ray & Hunt & Co	Jan 12 th 1835	86.18.20	2 ^o 5 ^o 1135	

The above Map of Township N.° 42 N. Range N.° 5 W. of the Principal Meridian Michigan is duly returned to the full notes of the survey filed in this Office which have been examined and approved
 Surveyor General's Office
 Detroit Aug 20 1835
 James L. Payne, Secy