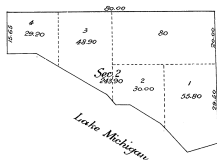


35-39
35-55

Supplemental Plat
of
Sec. 2, Tp. 42 N., R. 8 W., Mich. Mer.

MICHIGAN.


Scale: 20 chs. to an inch.



A.N.B.

Department of the Interior,
General Land Office,
Washington, D.C., April 13, 1911.

I hereby certify that the above is a plat of the subdivision made in accordance with Section 2219 U.S. Revised Statutes viz: Section 2, Tp. 42 N., R. 8 W., Mich. Meridian, Michigan, and is strictly conformable to the field notes of survey thereof on file in this office.


Commissioner and ex-officio
U.S. Surveyor General for Michigan.