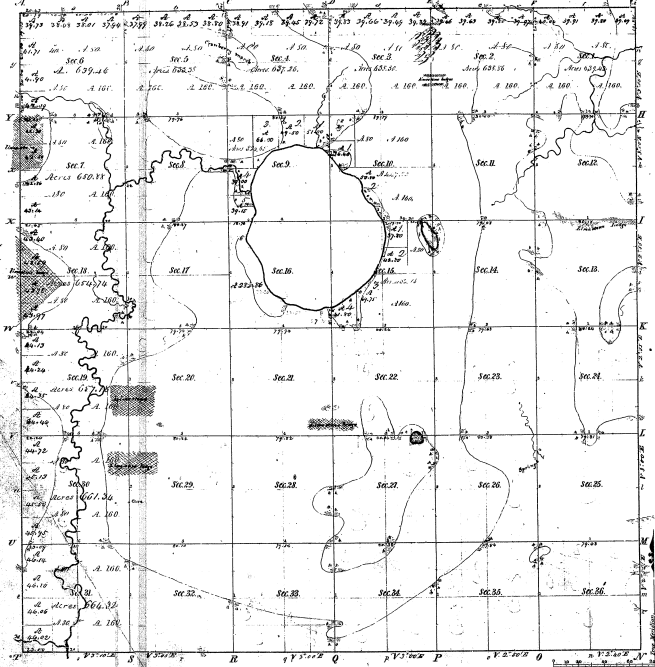


Township 1° 45. N. Range N° 4 W. Mer.

34 38



Mileage of Sections in this			
Point	Course	Dist.	Point
1	N 88 1/2 W	1.00	2
2	S 88 1/2 W	1.00	3
3	S 88 1/2 W	1.00	4
4	S 88 1/2 W	1.00	5
5	S 88 1/2 W	1.00	6
6	S 88 1/2 W	1.00	7
7	S 88 1/2 W	1.00	8
8	S 88 1/2 W	1.00	9
9	S 88 1/2 W	1.00	10
10	S 88 1/2 W	1.00	11
11	S 88 1/2 W	1.00	12
12	S 88 1/2 W	1.00	13
13	S 88 1/2 W	1.00	14
14	S 88 1/2 W	1.00	15
15	S 88 1/2 W	1.00	16
16	S 88 1/2 W	1.00	17
17	S 88 1/2 W	1.00	18
18	S 88 1/2 W	1.00	19
19	S 88 1/2 W	1.00	20
20	S 88 1/2 W	1.00	21
21	S 88 1/2 W	1.00	22
22	S 88 1/2 W	1.00	23
23	S 88 1/2 W	1.00	24
24	S 88 1/2 W	1.00	25
25	S 88 1/2 W	1.00	26
26	S 88 1/2 W	1.00	27
27	S 88 1/2 W	1.00	28
28	S 88 1/2 W	1.00	29
29	S 88 1/2 W	1.00	30
30	S 88 1/2 W	1.00	31
31	S 88 1/2 W	1.00	32
32	S 88 1/2 W	1.00	33
33	S 88 1/2 W	1.00	34
34	S 88 1/2 W	1.00	35
35	S 88 1/2 W	1.00	36
36	S 88 1/2 W	1.00	

34-38 (2)

Total number of Acres 90,110.31

Survey designated	By whom surveyed	Date of Condemn.	Amount of Storage	When Surveyed	Plan of Sec. and 1/4 Sec. the Sec. was in use
Township lines	P. S. & J. C. H.	1874	36	1874	
Subdivisions	John Johnson	23 July 1874	54.26	25	1145

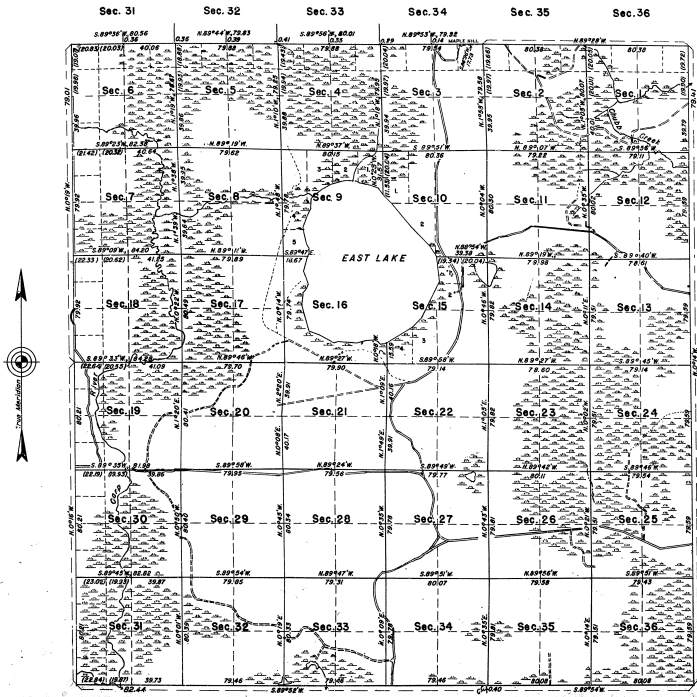
(The above Map of Township 1° 45 North of Range 4 West of the Original Meridian, has been compared to the field notes of the survey there on file in this Office which have been examined and approved.)

Surveyor General's Office
Detroit, Aug. 8, 1885
James L. Lyon, Secy

TOWNSHIP NO. 43 NORTH, RANGE NO. 4 WEST, OF THE MICHIGAN MERIDIAN, MICHIGAN.

DEPENDENT RESURVEY

34-38 (7)
34-38



MEMORANDUM

THIS PLAT OF THE RESURVEY OF T. 43 N., R. 4 W., DELINEATES A RETRACEMENT AND REESTABLISHMENT OF THE LINES OF THE ORIGINAL SURVEY AS SHOWN UPON THE PLAT APPROVED AUGUST 26, 1845, IN NEW TRING ORIGINAL POSITIONS ACCORDING TO THE BEST AVAILABLE EVIDENCE OF THE POSITION OF THE ORIGINAL CORNERS. ALL DIFFERENCES BETWEEN THE MEASUREMENTS SHOWN ON THE ORIGINAL PLAT AND THOSE DERIVED IN THE RETRACEMENT HAVE BEEN DISTRIBUTED PROPORTIONALLY BETWEEN ACCEPTED CORNERS IN ACCORDANCE WITH SURVEYING RULES. REFERENCE WILL BE MADE TO THE ORIGINAL PLAT FOR THE SHOWING OF AREAS AND MORE DETAILED DESCRIPTIONS OF THE VARIOUS SMALLER SUBDIVISIONS.

THE RESURVEY WAS EXECUTED PURSUANT TO AUTHORITY CONTAINED IN GENERAL LAND OFFICE LETTER 1676465 "E" DATED MARCH 23, 1927.

THE UPLAND AREAS SUPPORT A FAIR SECOND GROWTH OF POPLAR, BIRCH, MAPLE, BEECH, ELM, HEMLOCK, AND PINE TREES; CEDAR, BALSAM, SPRUCE, AND TABACCO ARE FOUND IN THE SWAMPS.

Lat. 46°04'30" N.
Long. 84°44'30" W.

SCALE: 1 INCH EQUALS 40 CHAINS.

AREA RESURVEYED: 22,119.50 ACRES

OFFICE OF SUPERVISOR OF SURVEYS
DENVER, COLORADO, NOVEMBER 14, 1941.

UNITED STATES
DEPARTMENT OF THE INTERIOR
GENERAL LAND OFFICE
WASHINGTON, D.C., NOVEMBER 26, 1941.

LINES DESIGNATED BY HOW SURVEYED	NO.	GROUP	DATE	FILED		WHEN SURVEYED COMPLETED
				FILED	RECORDED	
EXTENSION				17	77.02	
SUBDIVISIONAL	OSCAR B. WALSH	46	APRIL 24, 1940	57	27.60	JULY 5, 1940.
WEAVER	AND			4	27.61	SEPTEMBER 29, 1940.
CONNECTIONS	HUGH B. CRAWFORD			0	2.50	

THE ABOVE PLAT OF TOWNSHIP NO. 43 NORTH, RANGE NO. 4 WEST, OF THE MICHIGAN MERIDIAN, MICHIGAN, IS STRICTLY CONFORMABLE TO THE FIELD NOTES OF THE RESURVEY THEREOF, WHICH HAVE BEEN EXAMINED AND APPROVED.

THE RESURVEY REPRESENTED BY THIS PLAT, HAVING BEEN CORRECTLY EXECUTED IN ACCORDANCE WITH THE REQUIREMENTS OF LAW AND THE REGULATIONS OF THIS OFFICE, IS HEREBY ACCEPTED.

Wm. H. ...
SUPERVISOR OF SURVEYS.

Ed. David ...
ASSISTANT COMMISSIONER.