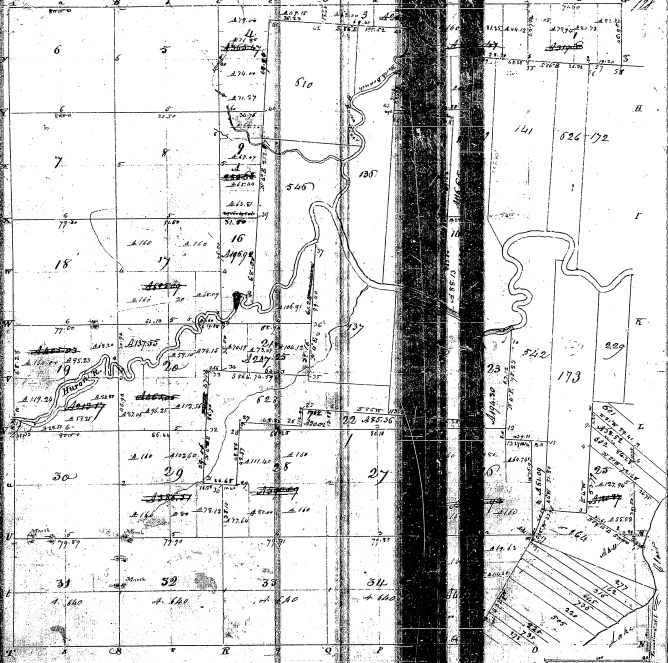


Township N. E North, Range N. M. East (A. Tor.)

32-24-24
32-24



1918

Pursuant to a contract with and instructions of the United States during the last day of 1877 and conveyed the above described Fraction in Range 20 East and Township North East North and returned with the Plat

1877

1878

John Figure Survey

1878 when admitted to the public entry that it had with and described in the General Office Certificate the

William P. R. 24