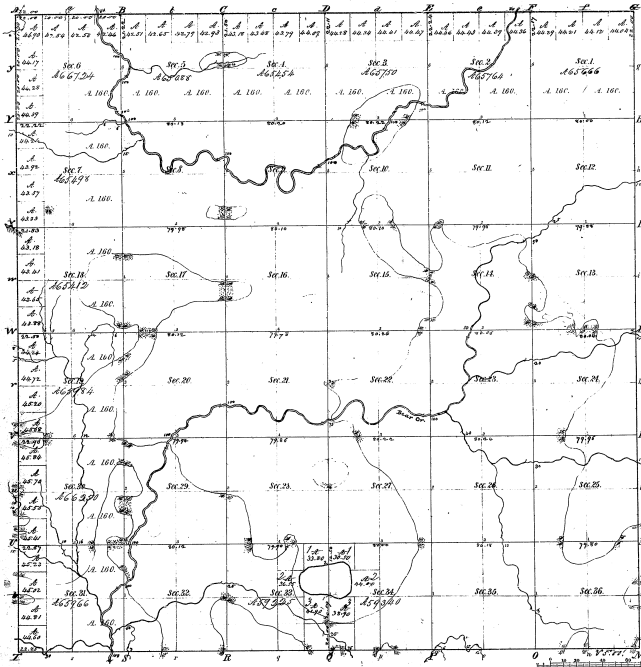


Township 1° 24' N., Range N° 4 West Mer. (Mich)



Mileage of a <u>Line</u> on <u>Section 33</u>			
Point	Course	Dist	Point
1	N 75° E	1.75	2
2	S 75° E	1.75	3
3	N 75° E	1.75	4
4	S 75° E	1.75	5
5	N 75° E	1.75	6
6	S 75° E	1.75	7
7	N 75° E	1.75	8
8	S 75° E	1.75	9
9	N 75° E	1.75	10
10	S 75° E	1.75	11
11	N 75° E	1.75	12
12	S 75° E	1.75	13
13	N 75° E	1.75	14
14	S 75° E	1.75	15
15	N 75° E	1.75	16
16	S 75° E	1.75	17
17	N 75° E	1.75	18
18	S 75° E	1.75	19
19	N 75° E	1.75	20
20	S 75° E	1.75	21
21	N 75° E	1.75	22
22	S 75° E	1.75	23
23	N 75° E	1.75	24
24	S 75° E	1.75	25
25	N 75° E	1.75	26
26	S 75° E	1.75	27
27	N 75° E	1.75	28
28	S 75° E	1.75	29
29	N 75° E	1.75	30
30	S 75° E	1.75	31
31	N 75° E	1.75	32
32	S 75° E	1.75	33
33	N 75° E	1.75	34
34	S 75° E	1.75	35
35	N 75° E	1.75	36
36	S 75° E	1.75	

7-23
17-23

Total number of Acres 83,141.21

Survey Designated	By Whom Surveyed	Date of Contract	Amount of Survey	When Surveyed	When Returned to the State Land Office
Township Lines	John L. ...	1857	1857	1857	1857
Subdivisions

The above Map of Township 1° 24' North of Range N° 4 West of the Principal Meridian, Michigan, is hereby confirmed to the full notes of the survey being on file in this Office which have been examined and approved.

Surveyed and returned to the State Land Office at Lansing, Michigan, this 10th day of August, 1857.

[Signature] State Surveyor