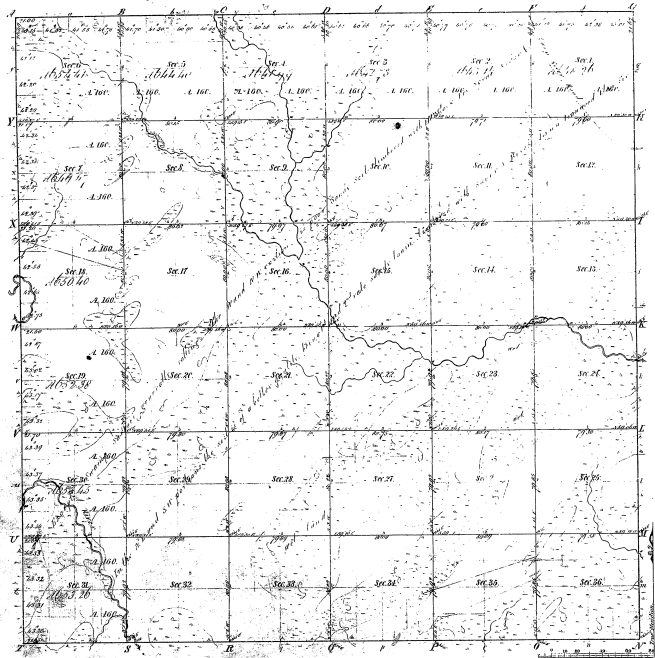


Township 42ⁿ. Range 25^w. Mer. Mich.



Boundaries of
 Public Courses 1812 Public Courses 1812 Public Courses 1812

38-31

38-31

Total number of acres 23,133.80

Survey designated by whom returned	Date of return	County of return	Amount of acres when returned	When returned	When returned
Ownership, area	20th March 1853	Washtenaw	23,133.80	1853	1853
Indebtedness	Ellas C. Mearns	Washtenaw	23,133.80	1853	1853

The above copy of Township 42 North of Range 25 West of the Principal Meridian Washtenaw County Michigan is a true and correct copy of the survey done in full in this office under the supervision of the Surveyor General's Office.
 J. Chapman
 Surveyor General's Office
 Ann Arbor Mich. 26th Feb. 1853