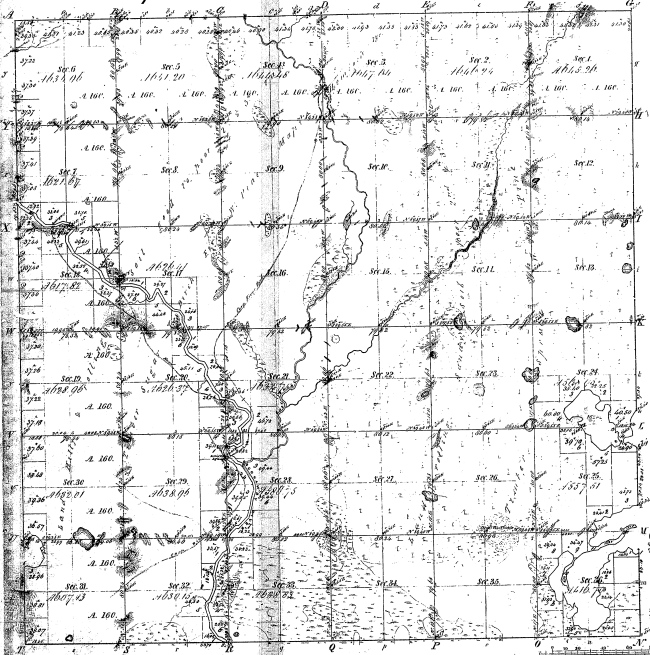


Township 1° 45' N Range 1° 25' W Mer. Mich.



Total number of Acres 37428.70

Survey described	By whom Surveyed	Date of Grant	Amount of Property	When Surveyed	Remarks
1842-43	Wm. M. Hall	June 18 1843	37 1/2	1843	
1843-44	Wm. M. Hall	June 18 1843	71 1/2	1843	
1844-45	Wm. M. Hall	June 18 1843	71 1/2	1843	

The above copy of Township 1° 45' N of Range 1° 25' W of the Principal Meridian of Michigan is truly conformable to the field notes of the survey thereof and the same have been examined and approved by the Surveyor General of the State of Michigan.

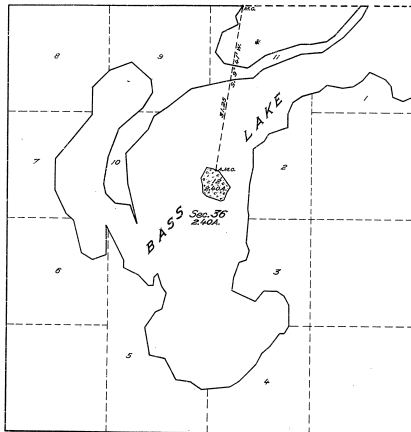
David Chapman  
Sur. Gen.

Measurements of	North Course	Dist	Course	Dist	Course	Dist
38-12						

38-12

Plat of an Island in Bass Lake, Sec. 36, T. 45 N., R. 25 W., Mich. Mer., Michigan.

30  
38-12



LEGEND.

Scale: 1 inch = 10 chains.

Surveyed by Guy N. Neal, U. S. Cadastral Engineer, on August 18, 1905, under special instructions for Group No. 12, Michigan, dated July 10, 1904, issued by the Technical Assistant to the Supervisor of Surveys, which were approved by the Commissioner of the General Land Office on July 17, 1905.

Area of lands surveyed = 2.40 Acres, not shown upon the original plat approved August 4, 1854.

Areas of previously surveyed lands not shown.



Office of U. S. Supervisor of Surveys.  
Denver, Colorado, August 30, 1907.

The above plat of an Island in Bass Lake in Section 36, Township 45 North, Range 25 West, of the Michigan Meridian, in the State of Michigan, is strictly conformable to the field notes of the survey thereof, which have been examined and approved.

*Samuel H. Brown*  
U. S. Supervisor of Surveys.

DEPARTMENT OF THE INTERIOR.  
GENERAL LAND OFFICE.

Washington, D. C., October 3, 1907.

The survey represented by this plat, having been correctly associated in accordance with the requirements of law and the regulations of this office, is hereby accepted.

*Thomas Cornwall*  
Assistant Commissioner.