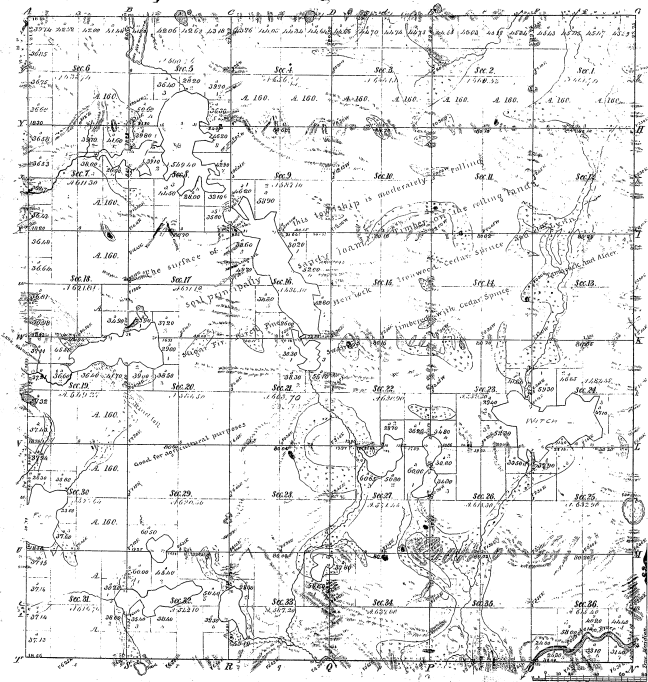


Township 1° 45' N. Range 1° 30' W. Mer. Mich.



Section 13

45-23

Section	Acres	Owner
1		
2		
3		
4		
5		
6		
7		
8		
9		
10		
11		
12		
13		
14		
15		
16		
17		
18		
19		
20		
21		
22		
23		
24		
25		
26		
27		
28		
29		
30		
31		
32		
33		
34		
35		
36		

Total number of Acres 21746.82

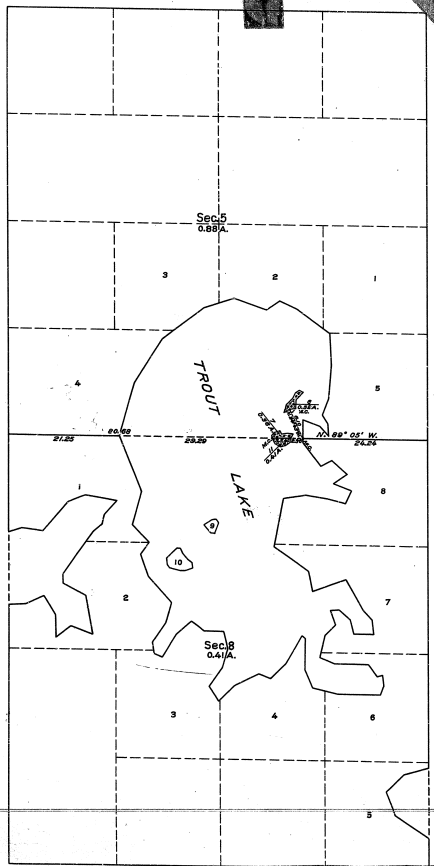
Average Assessed	By Whom Assessed	Date of Contract	Amount of Average	When Assessed	For use of and at the
Township 100	1860	11th	11.00	1860	the Sec. Com. and
1000000	1860	11th	11.00	1860	the Sec. Com. and
1000000	1860	11th	11.00	1860	the Sec. Com. and

This plan, map of Township 1° 45' North of Range 1° 30' West of the Principal Meridian, Michigan, is hereby approved to the full value of the land therein shown, and the same shall be returned to the proper authorities for their use.

George Smith, Register  
 Detroit, Mich. 1st Dec 1860

45-23

45-23



MEMORANDUM.

THIS PLAT REPRESENTS THE SURVEY OF TWO ISLANDS IN TROUT LAKE IN SECTIONS 5 AND 8, WHICH WERE NOT INCLUDED IN THE ORIGINAL SURVEY OF THE TOWNSHIP AS REPRESENTED ON THE PLAT APPROVED ON MARCH 8, 1849.

THE SURVEY WAS EXECUTED PURSUANT TO AUTHORITY CONTAINED IN GENERAL LAND OFFICE LETTER 1587996 "W" DATED AUGUST 10, 1935, WHICH BEARS DEPARTMENTAL APPROVAL UNDER DATE OF AUGUST 15, 1935.

OFFICE OF U. S. SUPERVISOR OF SURVEYS.  
 DENVER, COLORADO, DECEMBER 31, 1935.

THE ABOVE PLAT OF TWO ISLANDS IN TROUT LAKE IN SECTIONS 5 AND 8, TOWNSHIP NO. 45 NORTH, RANGE NO. 30 WEST, MICHIGAN MERIDIAN, MICHIGAN, IS STRICTLY CONFORMABLE TO THE FIELD NOTES OF THE SURVEY THEREOF, WHICH HAVE BEEN EXAMINED AND APPROVED.

*Walter P. Amos*  
 U. S. SUPERVISOR OF SURVEYS.

DEPARTMENT OF THE INTERIOR.  
 GENERAL LAND OFFICE.  
 WASHINGTON, D. C., FEBRUARY 15, 1936.

THE SURVEY REPRESENTED BY THIS PLAT, HAVING BEEN CORRECTLY EXECUTED IN ACCORDANCE WITH THE REQUIREMENTS OF LAW AND THE REGULATIONS OF THIS OFFICE, IS HEREBY ACCEPTED.

*Carlton H. Hunt*  
 ASSISTANT COMMISSIONER.

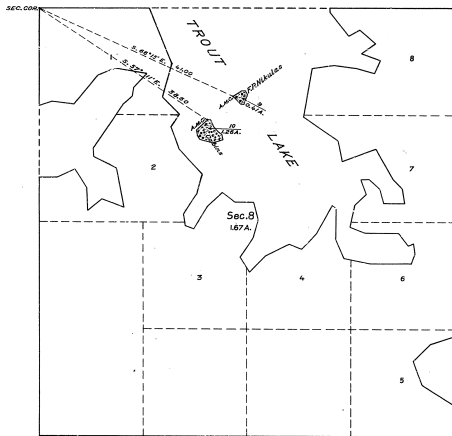
SCALE: 10 CHAINS TO AN INCH.

AREA SURVEYED, 1.29 ACRES.

LINES DESIGNATED	BY WHOM SURVEYED	GROUP NO.	DATE	MILEAGE		WHEN SURVEYED BEGUN	WHEN COMPLETED
				MLS.	CHS.		
SUBDIVISIONAL	WILLIS W. BANDY,		SEPT. 25,	1	0.68	OCT. 14,	OCT. 16,
WEADER	U. S. SURVEYOR.	39	1935.	0	23.70	1935.	1935.
CONNECTION				0	6.10		

Plat of Two Islands in Trout Lake, Section 8, T. 45 N., R. 30 W., Mich. Mer., Michigan.

45-23  
45-23



LEGEND.

SCALE, 1 INCH = 10 CHAINS.

SURVEYED BY GUY R. VEAL, U. S. CADASTRAL ENGINEER, ON AUGUST 27, 1927, UNDER SPECIAL INSTRUCTIONS FOR GROUP NO. 16, MICHIGAN, DATED MAY 26, 1927, ISSUED BY ARTHUR D. KIDDER, ASSOCIATE SUPERVISOR OF SURVEYS, WHICH WERE APPROVED BY THE COMMISSIONER OF THE GENERAL LAND OFFICE ON JUNE 1, 1927.

AREA OF LANDS SURVEYED = 1.67 ACRES, NOT SHOWN UPON THE ORIGINAL PLAT APPROVED MARCH 8, 1893.

AREAS OF PREVIOUSLY SURVEYED LANDS NOT SHOWN.

OFFICE OF U. S. SUPERVISOR OF SURVEYS,  
DENVER, COLORADO, MARCH 31, 1928.

THE ABOVE PLAT OF TWO ISLANDS IN TROUT LAKE IN SECTION 8, TOWNSHIP NO. 45 NORTH, RANGE NO. 30, WEST, OF THE MICHIGAN MERIDIAN, IN THE STATE OF MICHIGAN, IS STRICTLY CONFORMABLE TO THE FIELD NOTES OF THE SURVEY THEREOF, WHICH HAVE BEEN EXAMINED AND APPROVED.

*Guy R. Veal*  
U. S. SUPERVISOR OF SURVEYS.

DEPARTMENT OF THE INTERIOR.

GENERAL LAND OFFICE.

WASHINGTON, D. C., JUNE 28, 1928.

THE SURVEY REPRESENTED BY THIS PLAT, HAVING BEEN CORRECTLY EXECUTED IN ACCORDANCE WITH THE REQUIREMENTS OF LAW AND THE REGULATIONS OF THIS OFFICE, IS HEREBY ACCEPTED.

*Arthur D. Kidder*  
ASSISTANT COMMISSIONER.

# Plat of an Island

in Witch Lake,

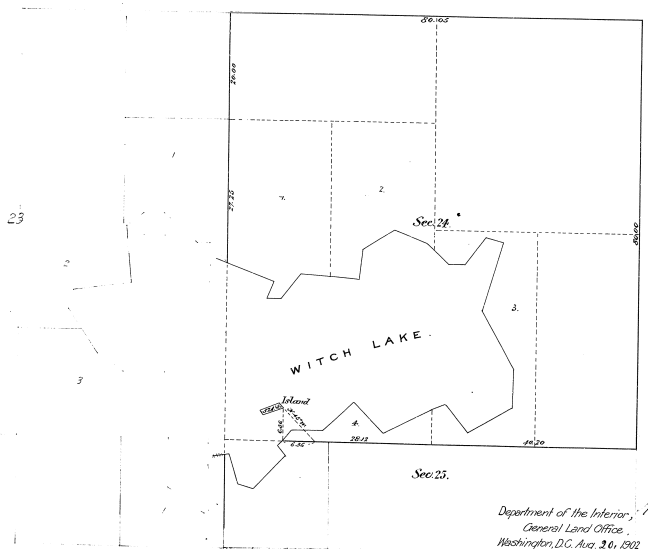
in Sec. 24, Tp. 45 N., R. 30 W., Mich. Mer., Michigan,

Surveyed by Herbert Armstrong, U.S. Deputy Surveyor, May 10<sup>th</sup> 1902,  
under special instructions from the Com<sup>r</sup> G.L.O. dated March 14<sup>th</sup> 1902.

Scale 100 ft. to an inch.

45-23

45-23  
M  
45-23



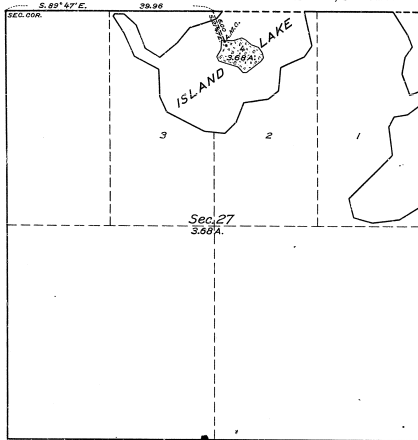
Department of the Interior  
General Land Office  
Washington, D.C. Aug. 26, 1902.

The above plat of an Island in Witch Lake, in Sec. 24, Tp. 45 N., R. 30 W., Mich. Mer., Michigan, is a correct plat of a survey executed by Herbert Armstrong, U.S. Deputy Surveyor, in pursuance of special instructions from the Commissioner of the General Land Office, bearing date March 14<sup>th</sup> 1902, and is strictly conformable to the field notes thereof on file in this office, which have been examined and approved.

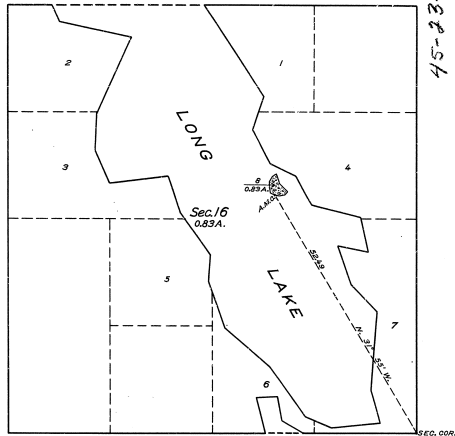
*H. A. Richards*  
Acting Commissioner and ex officio  
Surveyor General of Michigan.

TOWNSHIP No.45 NORTH, RANGE No.30 WEST, MICHIGAN MERIDIAN, MICHIGAN.

PLAT OF AN ISLAND IN ISLAND LAKE, SEC.27.



PLAT OF AN ISLAND IN LONG LAKE, SEC. 16.



45-23-15

MEMORANDUM.

THE ABOVE PLAT REPRESENTS THE SURVEY OF AN ISLAND IN "ISLAND LAKE", WHICH WAS NOT SHOWN UPON THE TOWNSHIP PLAT APPROVED MARCH 5, 1929. THE SURVEY WAS EXECUTED PURSUANT TO AUTHORITY CONTAINED IN GENERAL LAND OFFICE LETTER 1357912 "E", DATED MAY 3, 1929, WHICH BEARS DEPARTMENTAL APPROVAL UNDER DATE OF MAY 6, 1929.

MEMORANDUM.

THE ABOVE PLAT REPRESENTS THE SURVEY OF AN ISLAND IN LONG LAKE, WHICH WAS NOT SHOWN UPON THE TOWNSHIP PLAT APPROVED MARCH 5, 1929. THE SURVEY WAS EXECUTED PURSUANT TO AUTHORITY CONTAINED IN GENERAL LAND OFFICE LETTER 13465177 "E", DATED AUGUST 2, 1929, WHICH BEARS DEPARTMENTAL APPROVAL UNDER DATE OF AUGUST 5, 1929.

LEGEND.

SCALE: 10 CHAINS TO AN INCH.

SURVEYED BY ROBERT W. LIVINGSTON, U. S. CADASTRAL ENGINEER, FROM SEPTEMBER 27 TO 30, 1929, UNDER SPECIAL INSTRUCTIONS FOR GROUP NO. 19, MICHIGAN, DATED JULY 15 AND AUGUST 14, 1929, ISSUED BY THE TECHNICAL ASSISTANT TO THE SUPERVISOR OF SURVEYS, WHICH WERE APPROVED BY THE COMMISSIONER OF THE GENERAL LAND OFFICE ON JULY 23 AND AUGUST 20, 1929.  
AREA OF LANDS SURVEYED, 4.51 ACRES.

OFFICE OF U. S. SUPERVISOR OF SURVEYS,  
DENVER, COLORADO, NOVEMBER 13, 1930.

THE ABOVE PLAT OF AN ISLAND IN "ISLAND LAKE" IN SECTION 27 AND AN ISLAND IN "LONG LAKE" IN SECTION 16, TOWNSHIP NO. 45 NORTH, RANGE NO. 30 WEST, OF THE MICHIGAN MERIDIAN, IN THE STATE OF MICHIGAN, IS STRICTLY CONFORMABLE TO THE FIELD NOTES OF THE SURVEY THEREOF, WHICH HAVE BEEN EXAMINED AND APPROVED.

*Robert W. Livingston*  
U. S. SUPERVISOR OF SURVEYS.

DEPARTMENT OF THE INTERIOR,  
GENERAL LAND OFFICE.

WASHINGTON, D. C., DECEMBER 22, 1930

THE SURVEY REPRESENTED BY THIS PLAT, HAVING BEEN CORRECTLY EXECUTED IN ACCORDANCE WITH THE REQUIREMENTS OF LAW AND THE REGULATIONS OF THIS OFFICE, IS HEREBY ACCEPTED.

*W. C. Howell*  
ASSISTANT COMMISSIONER.