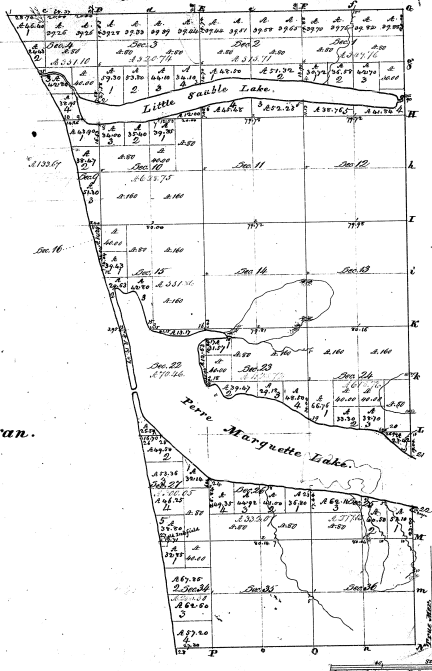


Township N. 18 North, Range N. 18 West Mer. / T. 100.



Lake Michigan.

9-6

| Number of Acres. | |
|------------------|-------|
| 250 | 30000 |
| 251 | 30000 |
| 252 | 30000 |
| 253 | 30000 |
| 254 | 30000 |
| 255 | 30000 |
| 256 | 30000 |
| 257 | 30000 |
| 258 | 30000 |
| 259 | 30000 |
| 260 | 30000 |
| 261 | 30000 |
| 262 | 30000 |
| 263 | 30000 |
| 264 | 30000 |
| 265 | 30000 |
| 266 | 30000 |
| 267 | 30000 |
| 268 | 30000 |
| 269 | 30000 |
| 270 | 30000 |
| 271 | 30000 |
| 272 | 30000 |
| 273 | 30000 |
| 274 | 30000 |
| 275 | 30000 |
| 276 | 30000 |
| 277 | 30000 |
| 278 | 30000 |
| 279 | 30000 |
| 280 | 30000 |
| 281 | 30000 |
| 282 | 30000 |
| 283 | 30000 |
| 284 | 30000 |
| 285 | 30000 |
| 286 | 30000 |
| 287 | 30000 |
| 288 | 30000 |
| 289 | 30000 |
| 290 | 30000 |
| 291 | 30000 |
| 292 | 30000 |
| 293 | 30000 |
| 294 | 30000 |
| 295 | 30000 |
| 296 | 30000 |
| 297 | 30000 |
| 298 | 30000 |
| 299 | 30000 |
| 300 | 30000 |
| 301 | 30000 |
| 302 | 30000 |
| 303 | 30000 |
| 304 | 30000 |
| 305 | 30000 |
| 306 | 30000 |
| 307 | 30000 |
| 308 | 30000 |
| 309 | 30000 |
| 310 | 30000 |
| 311 | 30000 |
| 312 | 30000 |
| 313 | 30000 |
| 314 | 30000 |
| 315 | 30000 |
| 316 | 30000 |
| 317 | 30000 |
| 318 | 30000 |
| 319 | 30000 |
| 320 | 30000 |
| 321 | 30000 |
| 322 | 30000 |
| 323 | 30000 |
| 324 | 30000 |
| 325 | 30000 |
| 326 | 30000 |
| 327 | 30000 |
| 328 | 30000 |
| 329 | 30000 |
| 330 | 30000 |
| 331 | 30000 |
| 332 | 30000 |
| 333 | 30000 |
| 334 | 30000 |
| 335 | 30000 |
| 336 | 30000 |
| 337 | 30000 |
| 338 | 30000 |
| 339 | 30000 |
| 340 | 30000 |
| 341 | 30000 |
| 342 | 30000 |
| 343 | 30000 |
| 344 | 30000 |
| 345 | 30000 |
| 346 | 30000 |
| 347 | 30000 |
| 348 | 30000 |
| 349 | 30000 |
| 350 | 30000 |
| 351 | 30000 |
| 352 | 30000 |
| 353 | 30000 |
| 354 | 30000 |
| 355 | 30000 |
| 356 | 30000 |
| 357 | 30000 |
| 358 | 30000 |
| 359 | 30000 |
| 360 | 30000 |
| 361 | 30000 |
| 362 | 30000 |
| 363 | 30000 |
| 364 | 30000 |
| 365 | 30000 |
| 366 | 30000 |
| 367 | 30000 |
| 368 | 30000 |
| 369 | 30000 |
| 370 | 30000 |
| 371 | 30000 |
| 372 | 30000 |
| 373 | 30000 |
| 374 | 30000 |
| 375 | 30000 |
| 376 | 30000 |
| 377 | 30000 |
| 378 | 30000 |
| 379 | 30000 |
| 380 | 30000 |
| 381 | 30000 |
| 382 | 30000 |
| 383 | 30000 |
| 384 | 30000 |
| 385 | 30000 |
| 386 | 30000 |
| 387 | 30000 |
| 388 | 30000 |
| 389 | 30000 |
| 390 | 30000 |
| 391 | 30000 |
| 392 | 30000 |
| 393 | 30000 |
| 394 | 30000 |
| 395 | 30000 |
| 396 | 30000 |
| 397 | 30000 |
| 398 | 30000 |
| 399 | 30000 |
| 400 | 30000 |

Total number of Acres 9761.57

| Surveyed | by whom | date | of course | then surveyed | by whom | date |
|----------|-----------|---------------|--|---------------|---------|---------------|
| 1833 | John Linn | July 17, 1833 | 12, 13, 14, 15, 16, 17, 18, 19, 20, 21, 22, 23, 24, 25, 26, 27, 28, 29, 30, 31, 32, 33, 34, 35, 36, 37, 38, 39, 40, 41, 42, 43, 44, 45, 46, 47, 48, 49, 50, 51, 52, 53, 54, 55, 56, 57, 58, 59, 60, 61, 62, 63, 64, 65, 66, 67, 68, 69, 70, 71, 72, 73, 74, 75, 76, 77, 78, 79, 80, 81, 82, 83, 84, 85, 86, 87, 88, 89, 90, 91, 92, 93, 94, 95, 96, 97, 98, 99, 100 | 1833 | J. Linn | July 17, 1833 |
| 1839 | John Linn | July 16, 1839 | 1, 2, 3, 4, 5, 6, 7, 8, 9, 10, 11, 12, 13, 14, 15, 16, 17, 18, 19, 20, 21, 22, 23, 24, 25, 26, 27, 28, 29, 30, 31, 32, 33, 34, 35, 36, 37, 38, 39, 40, 41, 42, 43, 44, 45, 46, 47, 48, 49, 50, 51, 52, 53, 54, 55, 56, 57, 58, 59, 60, 61, 62, 63, 64, 65, 66, 67, 68, 69, 70, 71, 72, 73, 74, 75, 76, 77, 78, 79, 80, 81, 82, 83, 84, 85, 86, 87, 88, 89, 90, 91, 92, 93, 94, 95, 96, 97, 98, 99, 100 | 1839 | J. Linn | July 16, 1839 |

The above Map of Township N. 18 North of Range N. 18 West of the 1st Meridian, which has been surveyed, is hereby confirmed to the title notes of the survey on file in this office, which have been examined and approved.

Surveyor General's Office
 Cincinnati, N. Y. 1839

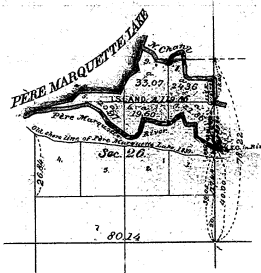
P. C. Bevington Surveyor

PLAT OF AN ISLAND IN SEC. 26,

T. 18 N. R. 18 W.

MICHIGAN.

Original
Rec. Vol. 168 B
Michigan



Scale 40 Chains to an Inch.

Dept of the Interior,
General Land Office,
Feby. 23rd 1884.

The above diagram of an Island in Section 26, T. 18 N., R. 18 W., in the State of Michigan, is a correct Plat of Survey executed by E. F. Guild, U. S. Deputy Surveyor, in pursuance of instructions received from the Commissioner of the General Land Office, bearing date the 7th. day of August, 1883, and is strictly conformable to the field notes of the Survey thereof, which have been examined and approved.

A. C. McManis
Commissioner
and Ex-Officio Survr Genl of Michigan.

RECEIVED AT

MAR 27 1884

STATE LAND OFFICE.

9-5(4)

