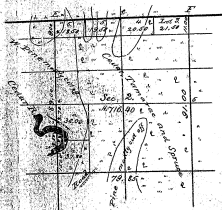


PLAT
OF SEC. 2.
T. 35 N. R. 25 W. MER. MICH.,
MICHIGAN.



Scale 40 Chains to an Inch.

Department of the Interior
General Land Office
April 26 1882.

I hereby certify that the above is a Plat of the 1/4th Section
showing former roads in accordance with Section 22, 19th United
Statutes of the N.E. and N.W. Quarters of Section 2, T. 35 N.
R. 25 W. Mer. Mich., in the State of Michigan.

A. G. Hartland
Commissioner
and Ex-Chief Surveyor General
of Michigan

47-21
5