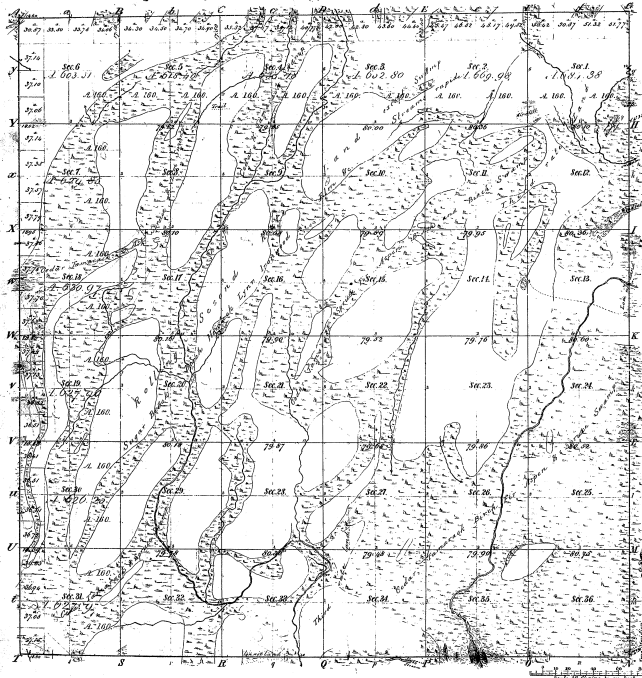


Township N^o 35 N. Range N^o 20 W. Mer. Mich.



Managers of

Frank	Conover	1874	1875	1876	1877	1878	1879	1880	1881	1882	1883	1884	1885	1886	1887	1888	1889	1890	1891	1892	1893	1894	1895	1896	1897	1898	1899	1900
-------	---------	------	------	------	------	------	------	------	------	------	------	------	------	------	------	------	------	------	------	------	------	------	------	------	------	------	------	------

41-20

47-20

Total number of Acres. 23005.10

Survey Investigated	By Whom Surveyed	Date of Contract	Amount of Survey	When Surveyed	When made up
Township Base	John A. Hall	June 14, 1857	36	1857	1857
Subdivisions	John A. Hall	Oct. 22, 1858	23,079.10	1858	1858

This plat map of Township N^o 35 North of Range N^o 20 West of the Meridian, Michigan, was a strictly official plat to the full notes of the survey of which on file in the Department have been examined, and approved.

Charles Sprague, Officer
 Detroit Dec. 20, 1888.

Lewis Lynn, Sp. Genl.