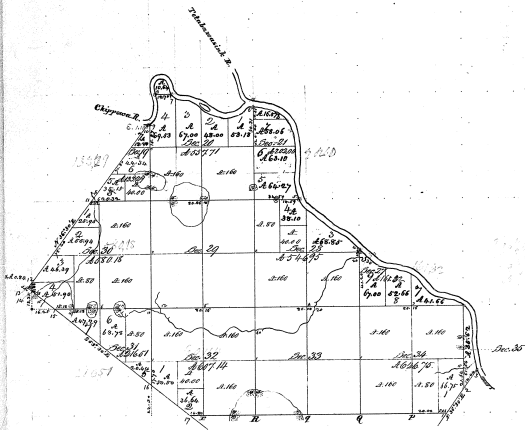




Township N<sup>o</sup> 14 N, Range N<sup>o</sup> 2 East

Mer. (Mich.)



Total number of acres 225.92

Survey designed	By Whom Surveyed	Date of Contract	Amount of Survey		When Completed
			Acres	Sq. Rods	
Township lines	John Mallett	Feb. 11, 1850	2.42	26.5	1850
Subdivisions	Same	21.21.26			

The above plat of Township N<sup>o</sup> 14 N, of Range N<sup>o</sup> 2 East of the  
 3<sup>d</sup> Principal Meridian is a plat conformable to the field work  
 of the survey shown on file in this Office, which have been examined and approved  
 by the Surveyor General's Office  
 Cincinnati, May 23, 1854

14-N  
 Mich.  
 23-278

Mentors of Subdivisions			
Acres	Section	Subdiv. Containing	Section
1.00	1	1.00	1
1.00	2	1.00	2
1.00	3	1.00	3
1.00	4	1.00	4
1.00	5	1.00	5
1.00	6	1.00	6
1.00	7	1.00	7
1.00	8	1.00	8
1.00	9	1.00	9
1.00	10	1.00	10
1.00	11	1.00	11
1.00	12	1.00	12
1.00	13	1.00	13
1.00	14	1.00	14
1.00	15	1.00	15
1.00	16	1.00	16
1.00	17	1.00	17
1.00	18	1.00	18
1.00	19	1.00	19
1.00	20	1.00	20
1.00	21	1.00	21
1.00	22	1.00	22
1.00	23	1.00	23
1.00	24	1.00	24
1.00	25	1.00	25
1.00	26	1.00	26
1.00	27	1.00	27
1.00	28	1.00	28
1.00	29	1.00	29
1.00	30	1.00	30
1.00	31	1.00	31
1.00	32	1.00	32
1.00	33	1.00	33
1.00	34	1.00	34
1.00	35	1.00	35
1.00	36	1.00	36
1.00	37	1.00	37
1.00	38	1.00	38
1.00	39	1.00	39
1.00	40	1.00	40
1.00	41	1.00	41
1.00	42	1.00	42
1.00	43	1.00	43
1.00	44	1.00	44
1.00	45	1.00	45
1.00	46	1.00	46
1.00	47	1.00	47
1.00	48	1.00	48
1.00	49	1.00	49
1.00	50	1.00	50
1.00	51	1.00	51
1.00	52	1.00	52
1.00	53	1.00	53
1.00	54	1.00	54
1.00	55	1.00	55
1.00	56	1.00	56
1.00	57	1.00	57
1.00	58	1.00	58
1.00	59	1.00	59
1.00	60	1.00	60

J. Stearns