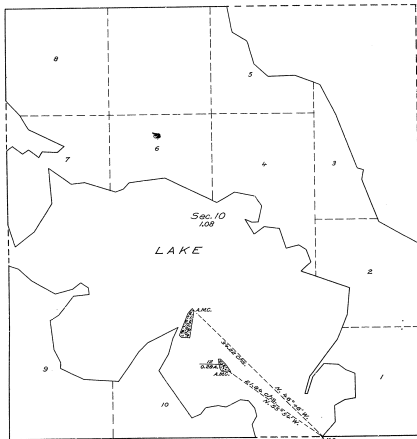


PLAT OF TWO ISLANDS
 IN THE
 Meandered Lake,
 Sec. 10, T. 22 N., R. 8 W., Mich. Mer.,
 MICHIGAN.



LEGEND.

Scale: 1 inch = 10 chains.

Surveyed by Guy R. Veal, U. S. Cadastral Engineer, on September 10 and 11, 1923, under supplemental special instructions for Group No. 1, Michigan, dated July 14, 1923, issued by Frank M. Johnson, Supervisor of Surveys, which were approved by the Commissioner of the General Land Office on July 26, 1923.

Area of lands surveyed = 1.00 Acres, not shown upon the original plat surveyed February 11, 1924.

Areas of previously surveyed lands not shown.

The undersigned hereby certifies that the survey delineated upon this plat has been executed under his general direction and in accordance with the approved supplemental special instructions, issued pursuant to authority contained in office letter 31164 "P" J H B, dated July 9, 1923, and that the field notes and the plat of the survey have been carefully verified.

Denver, Colorado.
 June 9, 1924.

Frank M. Johnson
 Supervisor of Surveys.

Department of the Interior, WHP
 General Land Office.
 Washington, D. C., January 21, 1925.

The above plat of two islands in a meandered lake in Section 10, Township 22 North, Range 8 West, of the Michigan Meridian, in the State of Michigan, is strictly conformable to the field notes of the survey thereof, on file in this office, which have been examined and approved.

William Gray
 Commissioner and ex officio
 U. S. Surveyor General for Michigan.

15-3
 15-33

15/35

15-33

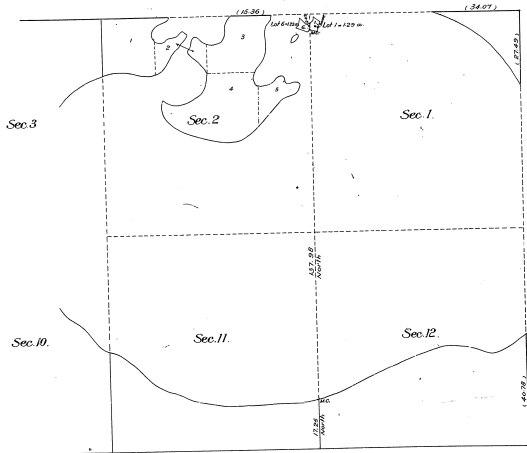
PLAT OF AN ISLAND

in Secs. 1 and 2, T.22 N., R.8 W., P.M.

MICHIGAN.

Surveyed by Walter E. Hoffman, U.S. Surveyor, September 27, 1912,
under special instructions from the Com' G.L.O., bearing date June 28, 1912.

Scale: 20 chs. to an inch.



Department of the Interior,
General Land Office,
Washington, D.C., April 6, 1914.

The above is a correct plat of survey of an island in Secs. 1 and 2,
T.22 N., R.8 W., P.M., Michigan, executed by Walter E. Hoffman, U.S.
Surveyor, in pursuance of special instructions from the Commissioner
of the General Land Office, bearing date June 28, 1912, and is strictly
conformable to the field notes of survey thereof on file in this office,
which have been examined and approved.

Walter E. Hoffman
Commissioner and ex officio
U.S. Surveyor General for Michigan.